



Making Data Acquisition Easy

CAGE/NCAGE CODE: 3FNFO

I-7561 USB to RS-232/422/485 Converter Quick Start Guide

Product Info:

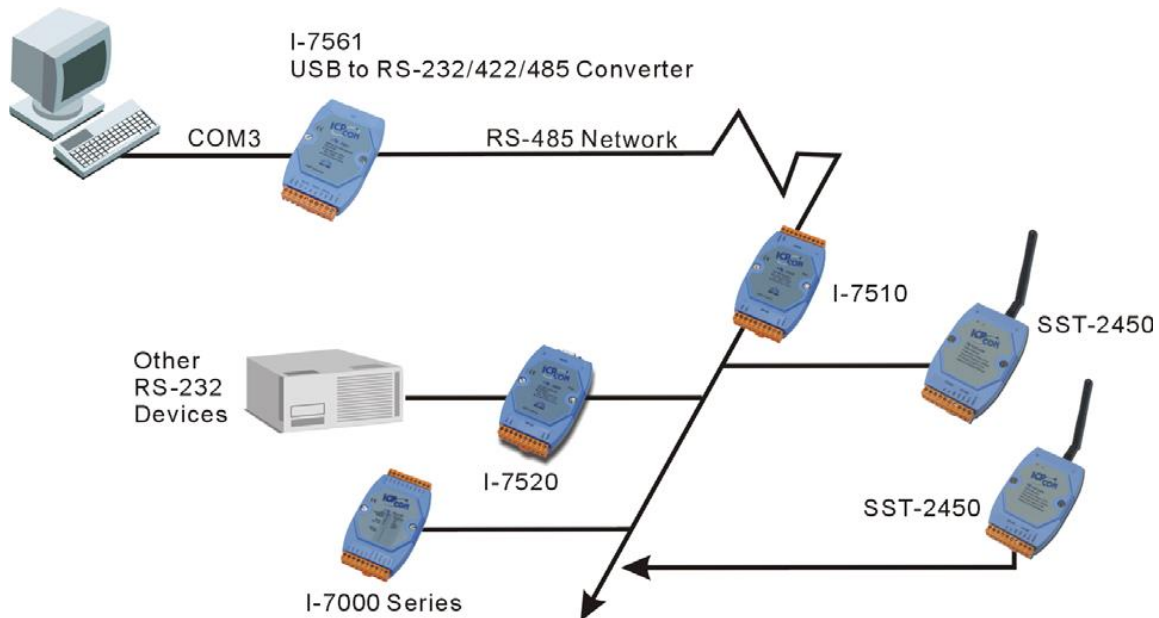
http://www.icpdas-usa.com/i_7561.html

1. Introduction

I-7561 is a cost-effective module for transferring serial data via USB. You can connect your serial devices to systems that use a USB interface. There is one RS-232/422/485 port where the I-7561 could act as a RS-232 to USB converter, RS-485 to USB converter, and RS-422 to USB converter. A "Self-Tuner" chip auto-tunes the Baud Rate and data format to the RS-485 networks. The I-7561 module is self-powered through USB. The I-7561 acts as a RS-232 to USB converter, an RS-485 to USB converter, and an RS-422 to USB converter.

2. System Network Configuration

- Multiple Baud Rate
- Multiple Data Format

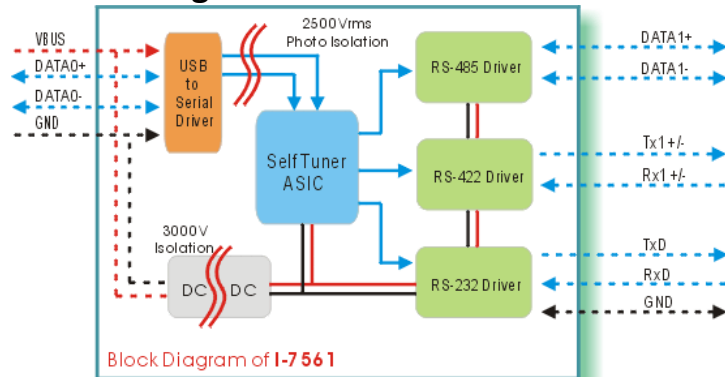




Making Data Acquisition Easy

CAGE/NCAGE CODE: 3FNFO

3. Block Diagram



4. Output Types

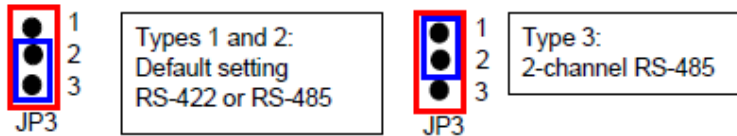
Selecting the I-7561 output type.

NOTE: The RS-232, RS-422 and RS-485 output types couldn't be used simultaneously, which means that you can only select 1 type to output.

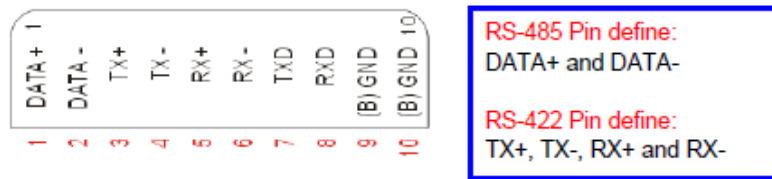
- Type 1: 1-channel RS-485 output.
- Type 2: 1-channel RS-422 output.
- Type 3: 2-channel RS-485 output. (Support star network)
- Type 4: 1-channel RS-232 output.

RS422/485 Output Jumpers settings:

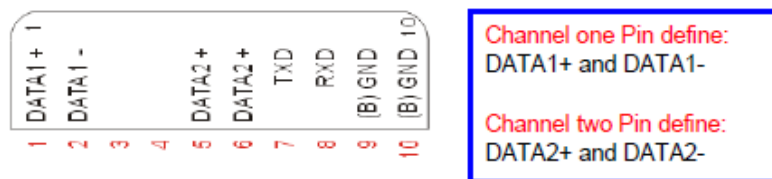
- For type 1: Set the JP3 jumper to positions 2 and 3.
 - For type 2: Set the JP3 jumper to positions 2 and 3.
 - For type 3: Set the JP3 jumper to positions 1 and 2.
 - For type 4: Set the JP3 jumper to positions 2 and 3.
- You don't need "PLUG AND PLAY", when you finish the Jumper setting.



Pin Assignment For type1 and type2:



Pin Assignment For type3:





Making Data Acquisition Easy

CAGE/NCAGE CODE: 3FNFO

5. Driver Installation

Installing the Device

Download driver files and install

1. Package CD \Napdos\7000\756x\7561
2. <http://www.icpdas-usa.com/documents/drivers/756x/756x.zip>

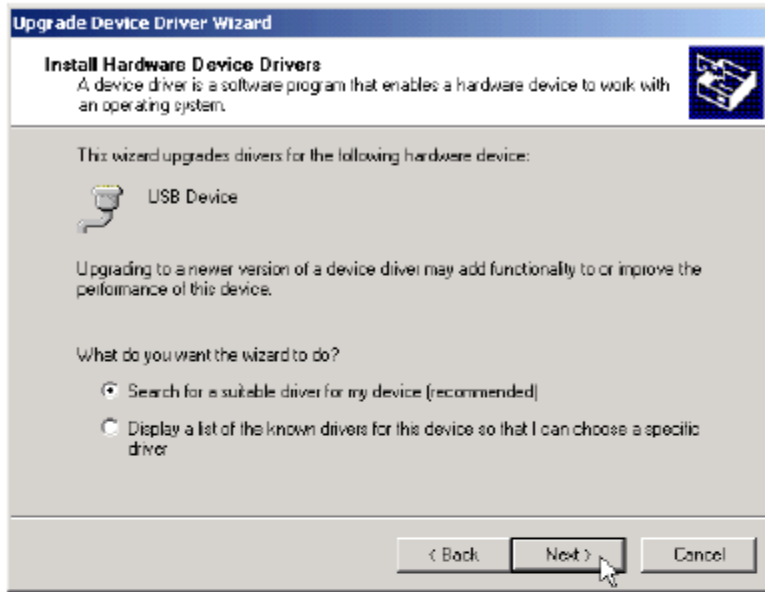
The following steps will show how to install the device under Windows 7.

1. Power on your computer and boot to Windows.
2. Locate the USB port of your computer and plug in the I-7561.
3. Windows will detect the new device and will initiate the Found New Hardware Wizard prompting you to install the software for the detected USB Device. Select to install from a list or specific location. Click Next to continue.

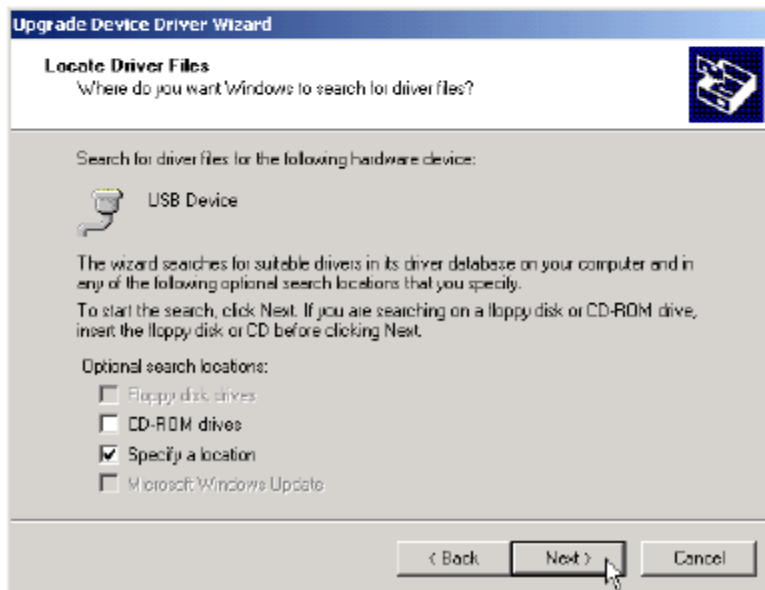




4. An "Install Hardware Device Drivers" window is shown. Click "Next" to initiate a search for a suitable driver for your device.



5. Select the "Specify a location" optional search locations. If the "CD-ROM drives" checkbox is selected, please insert the driver CD. Click "Next" to start the search.

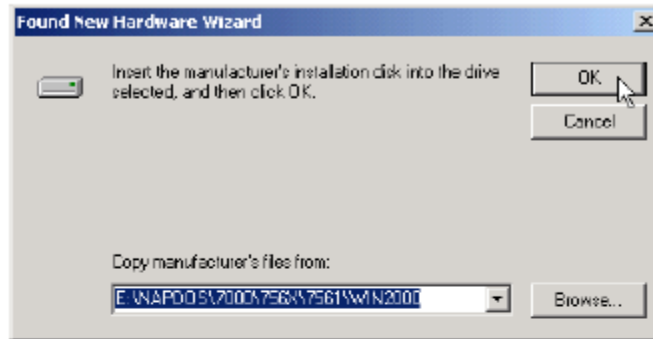




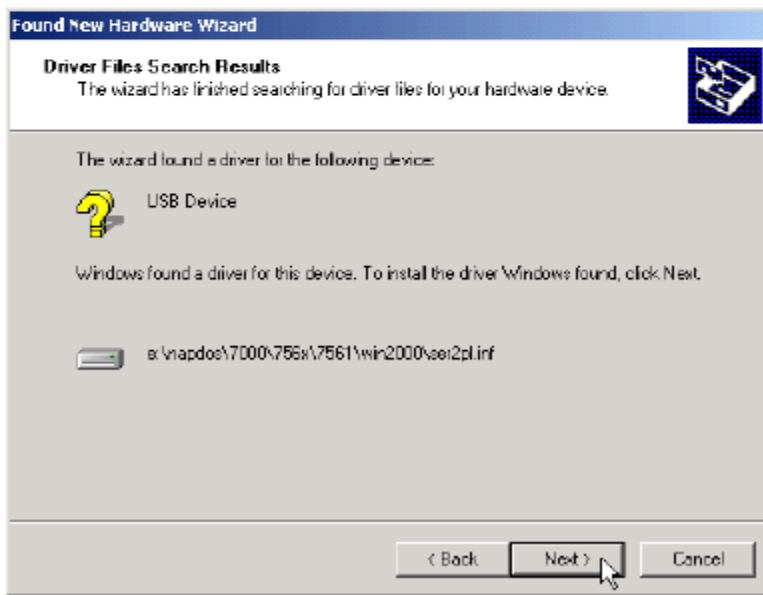
Making Data Acquisition Easy

CAGE/NCAGE CODE: 3FNFO

6. If the "Specify a location" is selected, you must choose the correct path. Enter E:\Npados\7000\756x\7561(The 'E' is the Disk that Package CD put in). Click "OK" to start the search.



7. Once Windows finds the correct driver, click "Next" to install the driver.

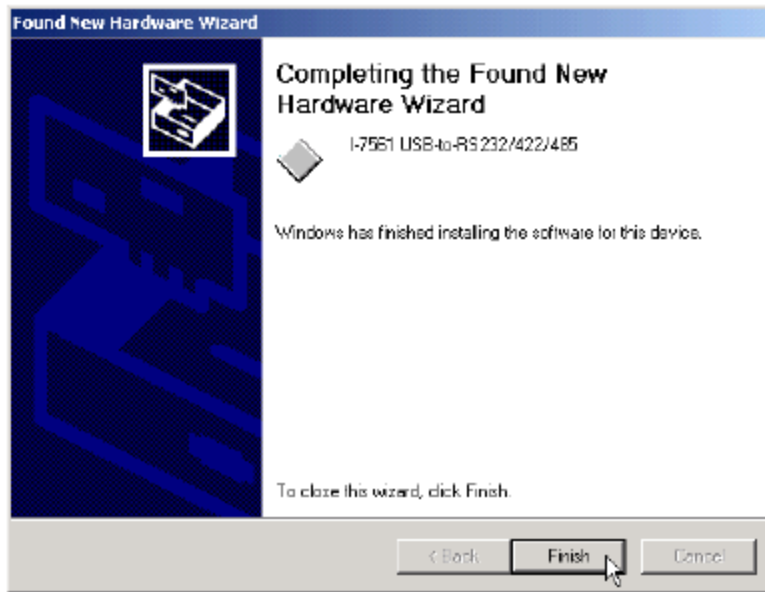




Making Data Acquisition Easy

CAGE/NCAGE CODE: 3FNFO

- Windows will then install the driver for the USB-to-RS232/422/485. Once installation is complete, Windows will notify you that it has finished installing the software. Click "Finish" to continue.



NOTE: When you finish the driver installation, please unplug the USB cable, and then plug the USB cable again.



Verify driver installation

This section will show you on how to verify whether the I-7561 was properly installed. You will also need to determine the COM port assignment made by Windows for the USB to RS-232/422/485 converter.

Note: Before you connect the I-7561 for the first time, ensure that you do not attach any serial devices to the converter. You must only connect the I-7561 itself.

To verify whether the device is properly installed and determine the COM port assignment for the device:

1. Click “Start” > “Control Panel” > “Device Manager” button. Double-click on Ports (COM & LPT). If the device was correctly installed, you should now see the I-7561 USB-to-RS232/422/485 (COM10) device listing. This also means that Windows has assigned the device to the COM10 port.
2. Once you have verified that the device has been properly installed, you may now proceed to use the USB-to-RS232/422/485 Converter to connect to serial devices. Attach the serial device to the serial port of the adapter and then connect the USB connector to the USB port of your computer. Use the supplied driver for the serial device if needed.

