



Making Data Acquisition Easy

CAGE/NCAGE CODE: 3FNFO

I-7188E2

Serial to Ethernet Converter/Intelligent Controller

Quick Start Guide

Product Website:

http://www.icpdas-usa.com/i_7188e2.html

Introduction

The I-7188E2, Embedded Internet/Ethernet Controller, focuses in Embedded Control applications. According to different embedded firmware and application program, the Internet Communication Controller can be used as Device Server, Addressable Ethernet to RS-232/485/422 Converter, or Embedded Internet/Ethernet Controller.

The I-7188EN series can be used as Ethernet to RS-232/485/422 Device Server. The Device Server is an appliance that network enables any device with a serial communication port. By virtue of its independent operating system, protocol independence, small size and flexibility, Device servers are able to meet the demand of virtually any network-enable application. Most devices don't have network ports. Our Internet Communication Controllers allow those devices to become connected to the network.

What's in the Box?

In addition to this guide, the package includes the following items:



I-7188E Converter



Software Utility CD



RS-232 Cable
(CA-0910)



Screw Driver
(1C016)

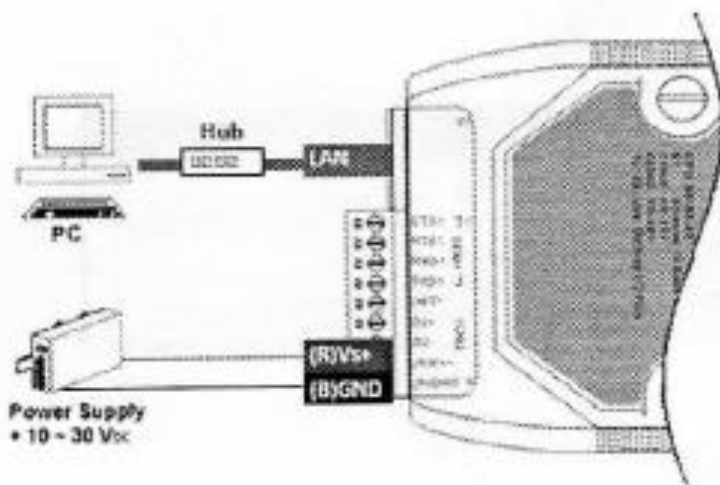
1 Starting the I-7188E up and Wiring it to a PC

Step 1: Connect to a +10 ~ +30 V_{DC} power supply

- i. +Vs of the I-7188E should be connected to the positive of the power supply.
- ii. GND of the I-7188E should be connected to the negative of the power supply.

Step 2: Connect to a PC

Ethernet port of the I-7188E should be connected to a PC via a hub by using an Ethernet cable.



2 Installing the Tools and Utilities

Step 1: Install the MiniOS7 Utility



The MiniOS7 Utility can be obtained from companion CD or our FTP site:
CD:\Napdos\minios7\utility\minios7_utility\
ftp://ftp.icpdas.com/pub/cd/8000cd/napdos/minios7/utility/minios7_utility/

Step 2: Install the VxComm Utility



The VxComm Utility can be obtained from companion CD or our FTP site:
CD:\Napdos\Driver\VxComm_Driver\
ftp://ftp.icpdas.com/pub/cd/8000cd/napdos/driver/vxcomm_driver/

3 Using MiniOS7 Utility to Assign an IP Address

MiniOS7 Utility can be used to configure the IP address. Before starting the configuration process, make sure that the I-7188E are used to connect to your network. The default IP addresses are as follows:

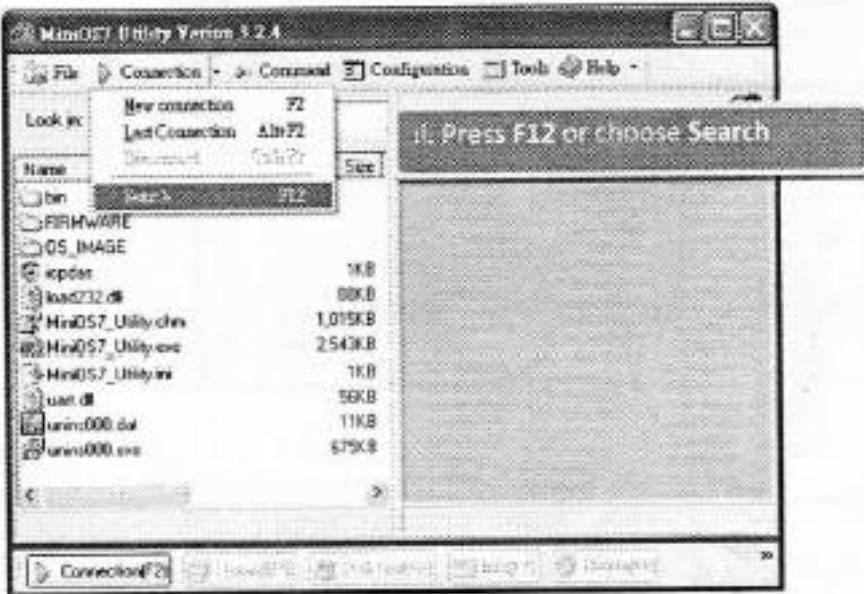
| Item | Default |
|-------------|---------------|
| IP Address | 192.168.255.1 |
| Subnet Mask | 255.255.0.0 |
| Gateway | 192.168.0.1 |



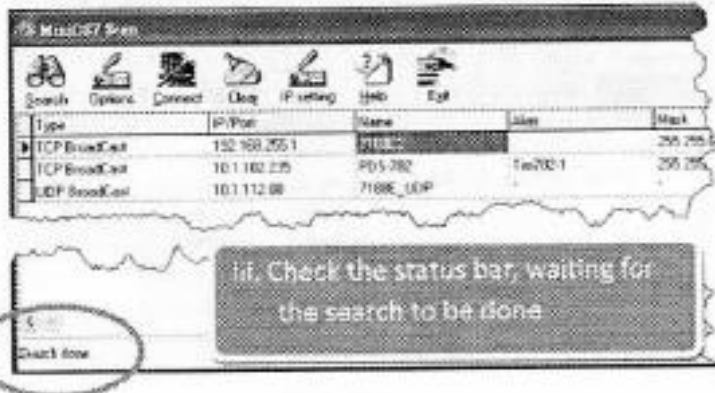
Step 1: Run the MiniOS7 Utility, and then search the I-7188E



- i. Double-click the **MiniOS7 Utility** shortcut on your desktop.
- ii. Press **F12** or choose **Search** from the **Connection** menu.

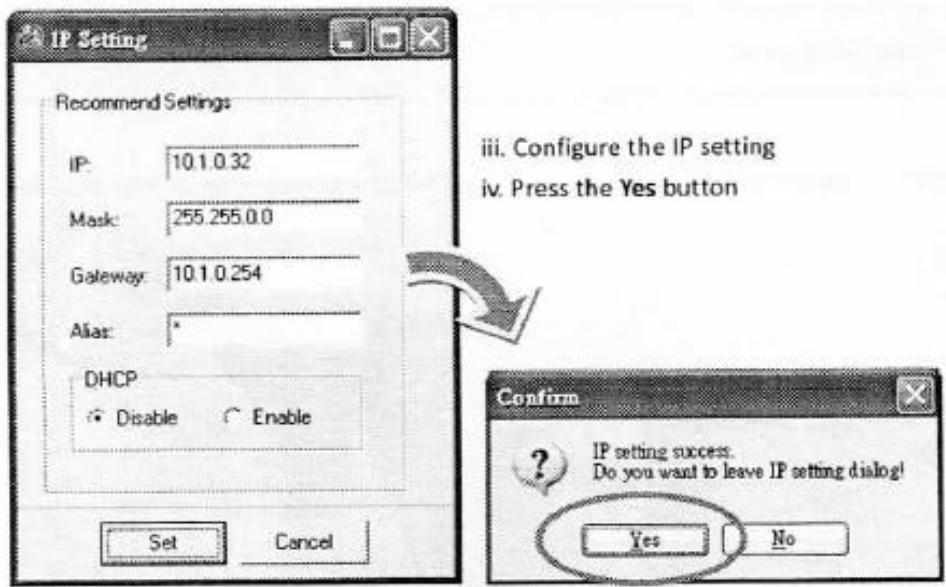
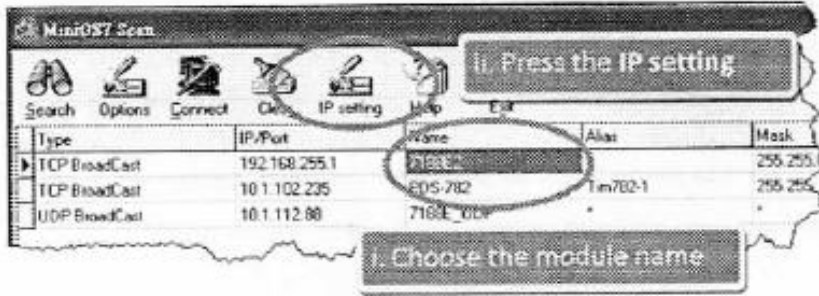


- iii. Check the status bar of the **MiniOS7 Scan** dialog, waiting for the search to be done.



Step 2: Configure the IP Address

- i. Choose the module name from the column.
- ii. Press the IP setting from the toolbar, and then assign the new IP address



4 Using VxComm Utility to Create Virtual COM Ports

The VxComm Utility is a PC-based tool that can be used to create virtual COM port(s) and map them to the COM port(s) of the PDS/8000E/7188E.

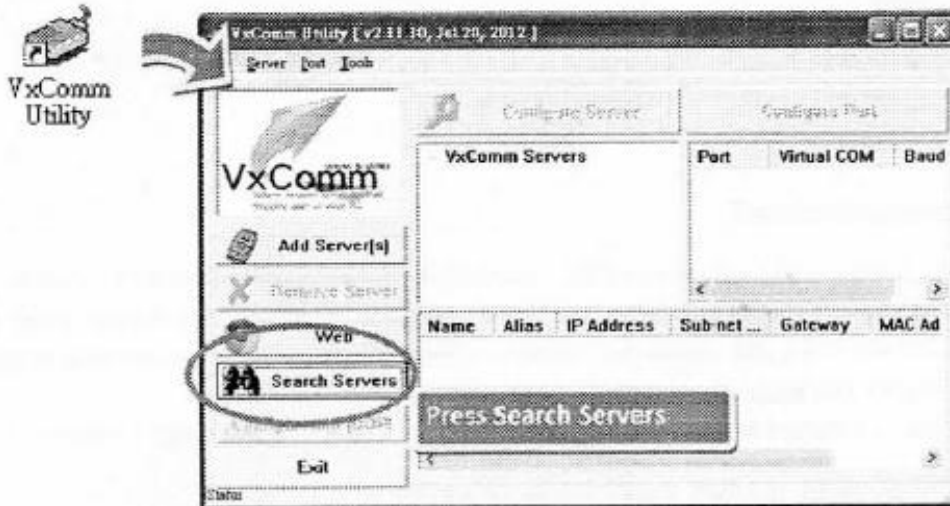


Making Data Acquisition Easy

CAGE/NCAGE CODE: 3FNFO

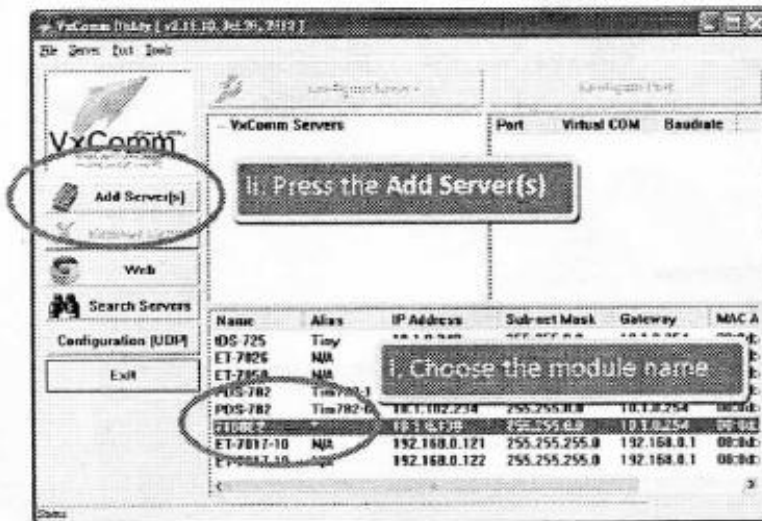
Step 1: Run the VxComm Utility and search the I-7188E

- i. Double-click the VxComm Utility shortcut on your desktop.
- ii. Press the Search Servers button from the toolbar.



Step 2: Add the I-7188E server

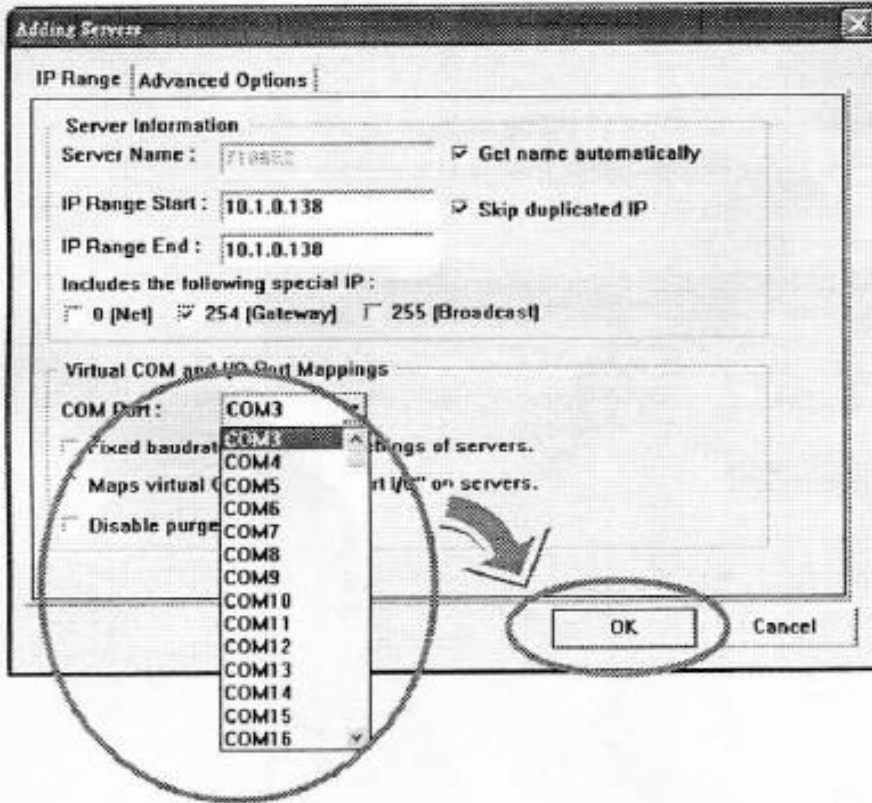
- i. Choose the module name from the column.
- ii. Press the Add Server(s) from the toolbar





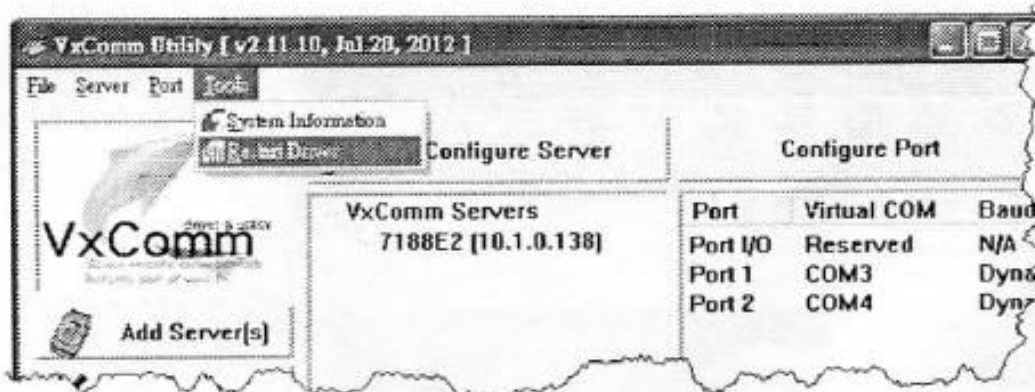
Making Data Acquisition Easy

iii. Assign a valid COM port, and then press OK button



Step 3: Restart the driver to take effect

i. Choose **Restart Driver** from the **Tools** menu.





Making Data Acquisition Easy

CAGE/NCAGE CODE: 3FNFO

ii. Press the **Restart Driver** button

