



Making Data Acquisition Easy

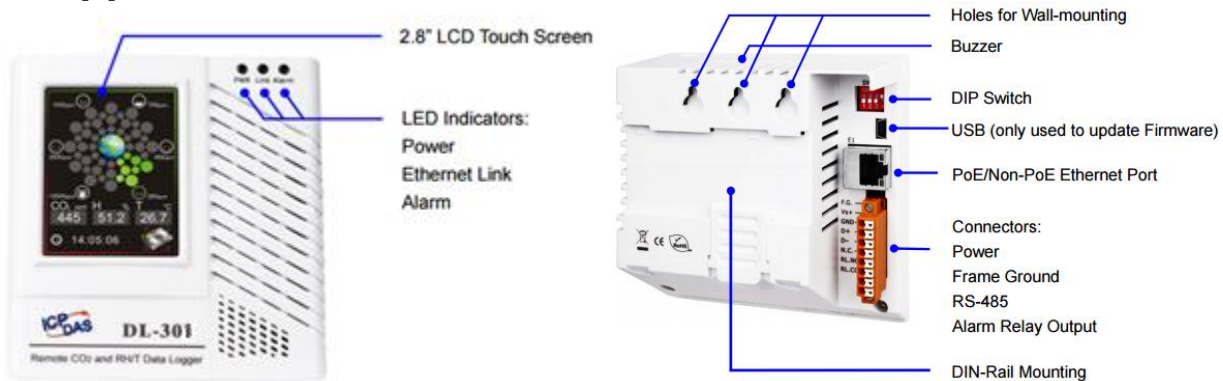
CAGE/NCAGE CODE: 3FNFO

DL-301 Remote CO, Temperature, Humidity, Dew Point Data Logger Quick Start Guide

1. Introduction

The DL-301 Data Logger device is used for recording time- stamped Temperature, Humidity, CO, and Dew Point information. Data can be recorded up to 450,000 records. The DL-301 data logger can be used on iOS mobile devices with its iOS app. Users can have real-time access of data using free Windows software, iOS and Android APPs. It supports DCON, Modbus RTU, Modbus TCP, M2M IoT - Internet of Things, and MQTT protocols and communicates over RS-485 and Ethernet, and can be Powered-over-Ethernet (PoE).

2. Appearance



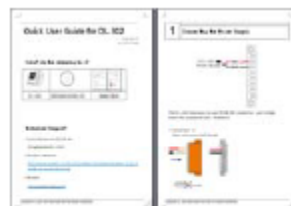
3. What's in the shipping box?



DL-301 Logger



Software Utility CD



Quick Start

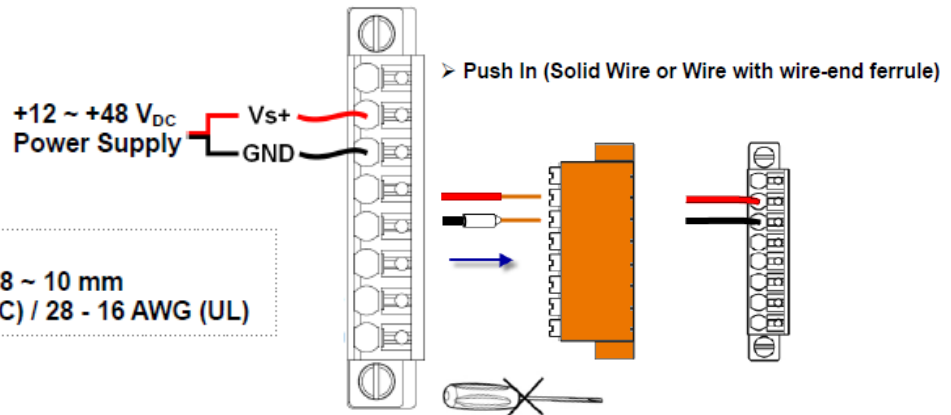
4. Installation

1. Connecting the Power Supply

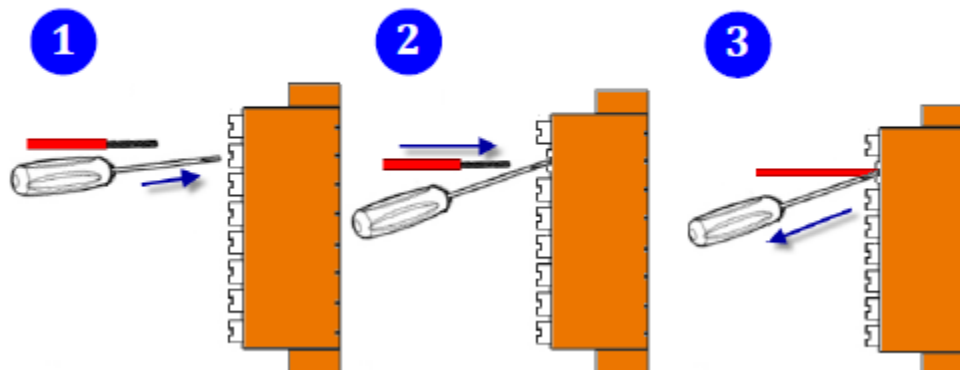
The DL-300 logger can be powered by either a PoE switch or a +12 ~ +48 V power supply as below:

Wire requirement:

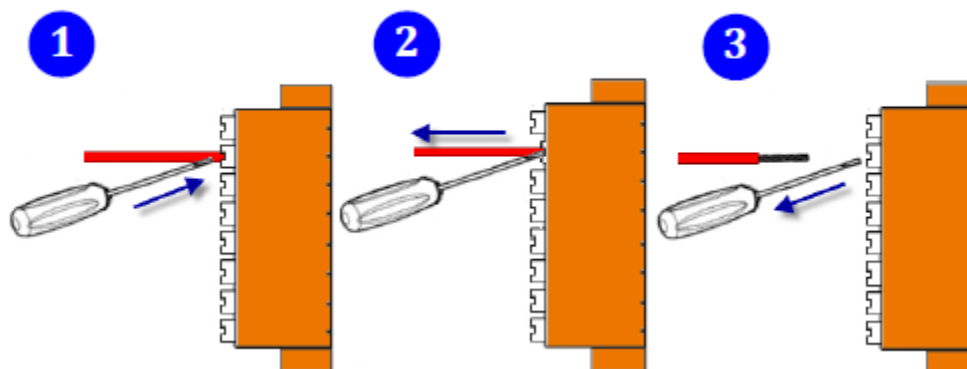
- Stripping length: 8 ~ 10 mm
- 0.20 - 1.5 mm² (IEC) / 28 - 16 AWG (UL)



➤ Flexible Wire



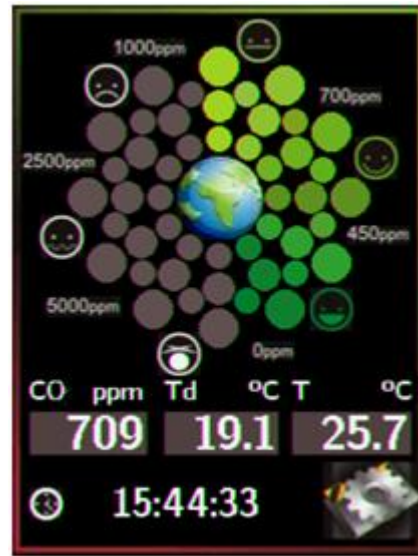
➤ Push and Release





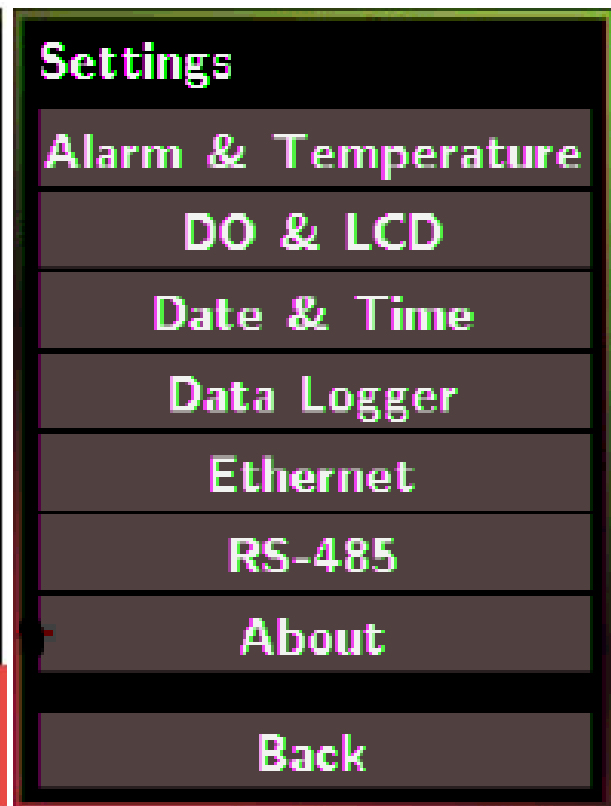
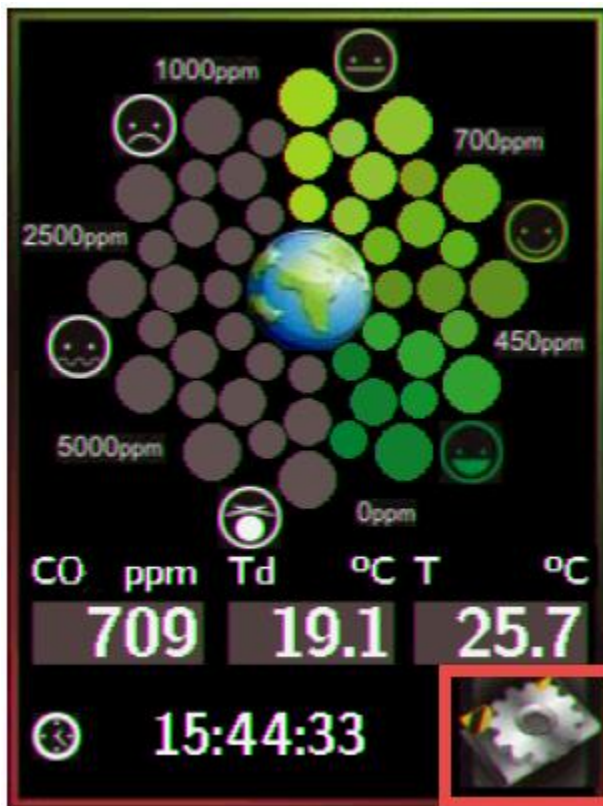
Making Data Acquisition Easy

2. Turn on DL-301 logger



5. Configuration via DL-301

Touch the icon in the bottom-right corner of screen to enter the Settings menu.



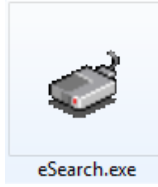
6. Configuration via Web browser

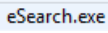
Search the DL-301 logger

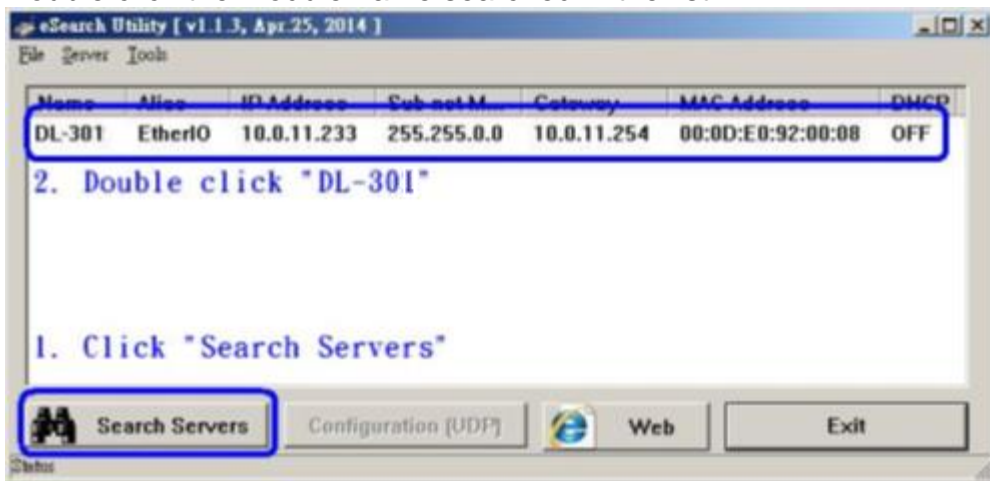
eSearch is designed to search out the DL-300 logger connected on the same Ethernet network, it supports for Linux and Windows and is needless to install.

eSearch can be found from software utility CD or download [HERE](#).

Before running eSearch, turn off firewall on computer, and connect the computer and DL-300q to Ethernet network.



1. Launch eSearch  ,
Click the “Search Servers” button to search the DL-300 modules
2. Double click the module name searched in the list.



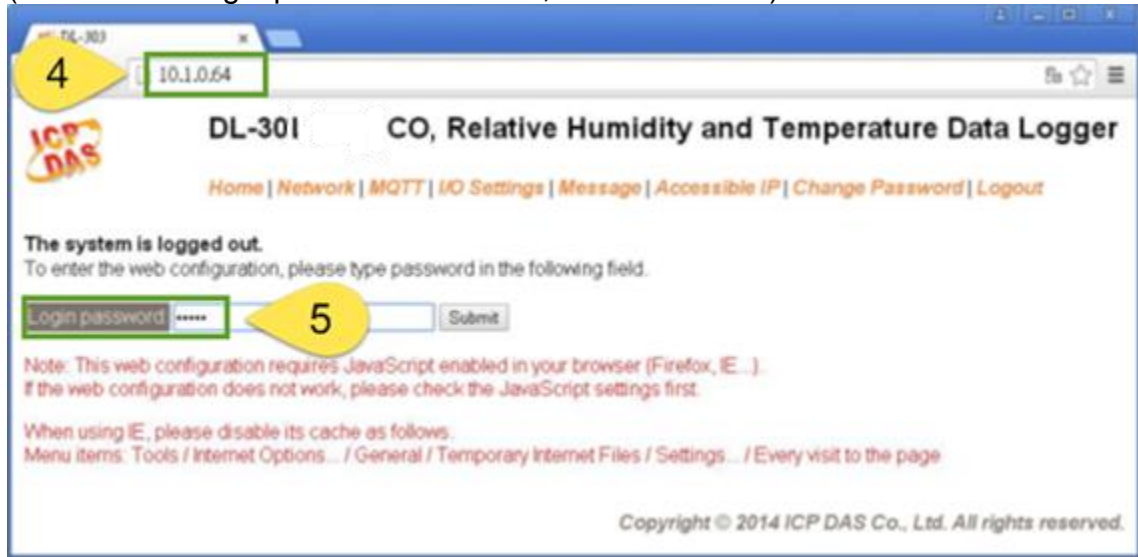
3. Set available IP Address, Sub-net Mask, Gateway (designated by your network administrator) and alias and click the OK button. The Alias for easy to identify each item will be shown at the bottom-left corner of the DL-300 screen.





Making Data Acquisition Easy

4. Enter the IP address for your DL-301 in the address bar of a web browser. (The IP address could be obtained by going to the Settings >> About menu from the touch screen.)
5. Type the Login password, and click the Submit button. (The default Login password is Admin, case sensitive.)



6. The first page displayed is Home, it shows the based configuration of the DL-301 module and the real-time data as below. In the Sensor Readings field is the real-time data of CO/CO2 concentration, temperature, humidity and dew point, the minimum value (Low Latched) and maximum value (High Latched) logged. Clicking on the Clear Low Latched button and the Clear High Latched button can reset the latched data to current value and latch new minimum or maximum value.

Modal Name	DL-301	Alias Name	Room303
Firmware Version	B2.6 [Jul. 16, 2015]	MAC Address	00-0D-E0-FF-FF-FF
P Address	10.1.0.64	TCP Port Timeout (Socket Watchdog, Seconds)	180
Initial Switch	Off	System Timeout (Network Watchdog, Seconds)	0

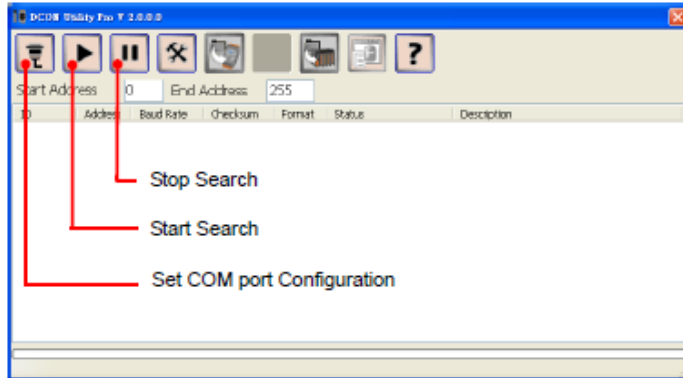
Type	Value	Low Latched	High Latched
CO	0 ppm	0 ppm	1 ppm
CO ₂	756 ppm	483 ppm	1628 ppm
Relative Humidity	56.5%	53.6%	66.5%
Temperature	27.9 °C	26.5 °C	29.6 °C
Dew Point	18.5 °C	17.6 °C	21.3 °C




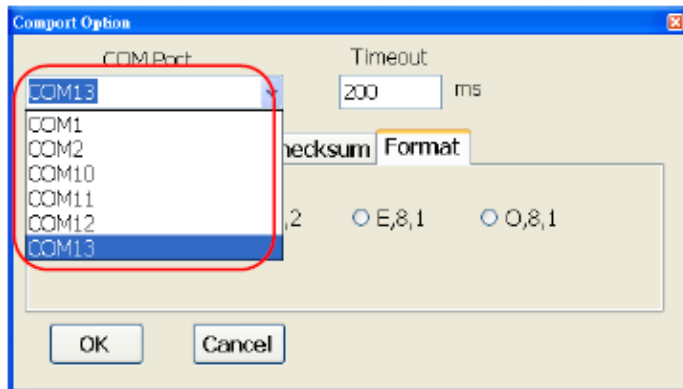
7. Configuration via RS-485

1. Install and open [DCON Utility Pro](#) from software utility CD or download [HERE](#).

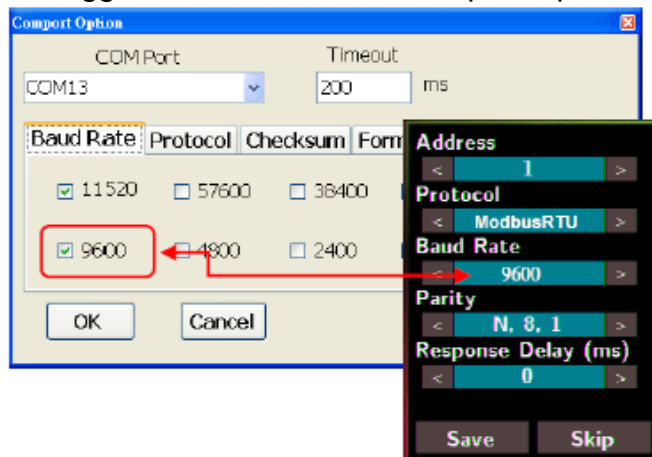
2. Launch DCON_Utility_Pro.exe



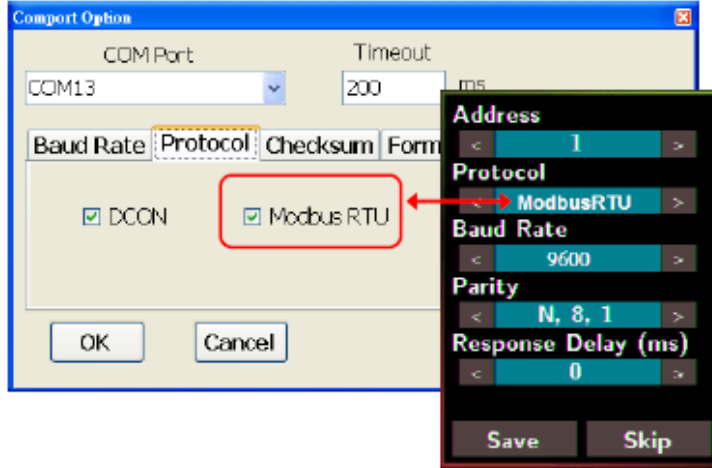
3. Click the icon  to configure the COM port.
4. Select the COM Port number used to connect the DL-300 logger.



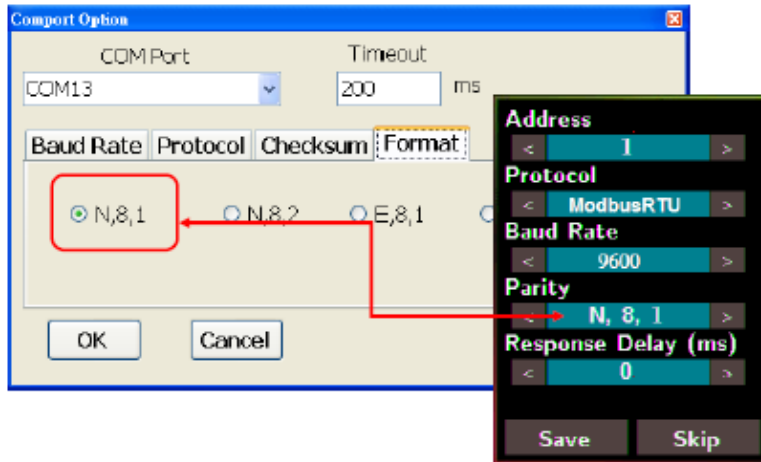
5. The Baud Rate is factory default to 9600 bps, make sure the baud rate setting in the logger is checked in the Comport Option dialog box.



6. Select the Protocol tab and check the protocol that set in the logger.



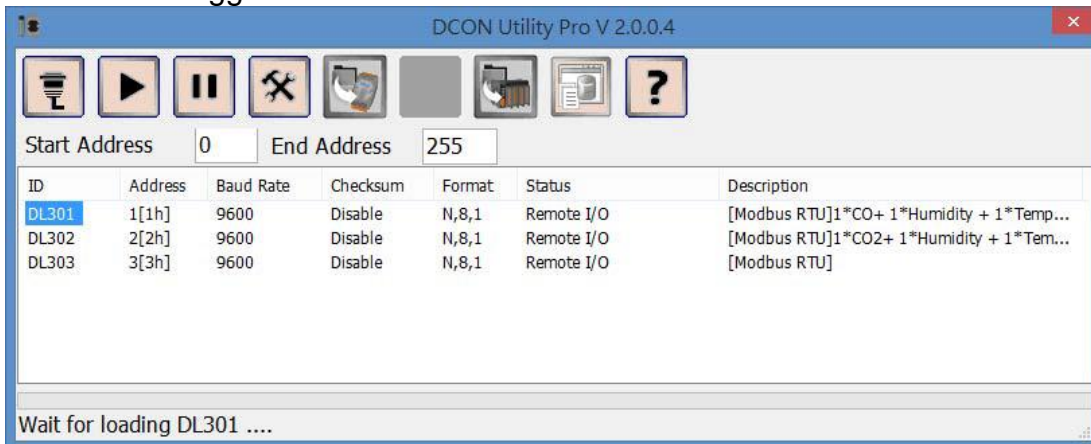
7. Select the Format tab and check the parity that set in the logger.



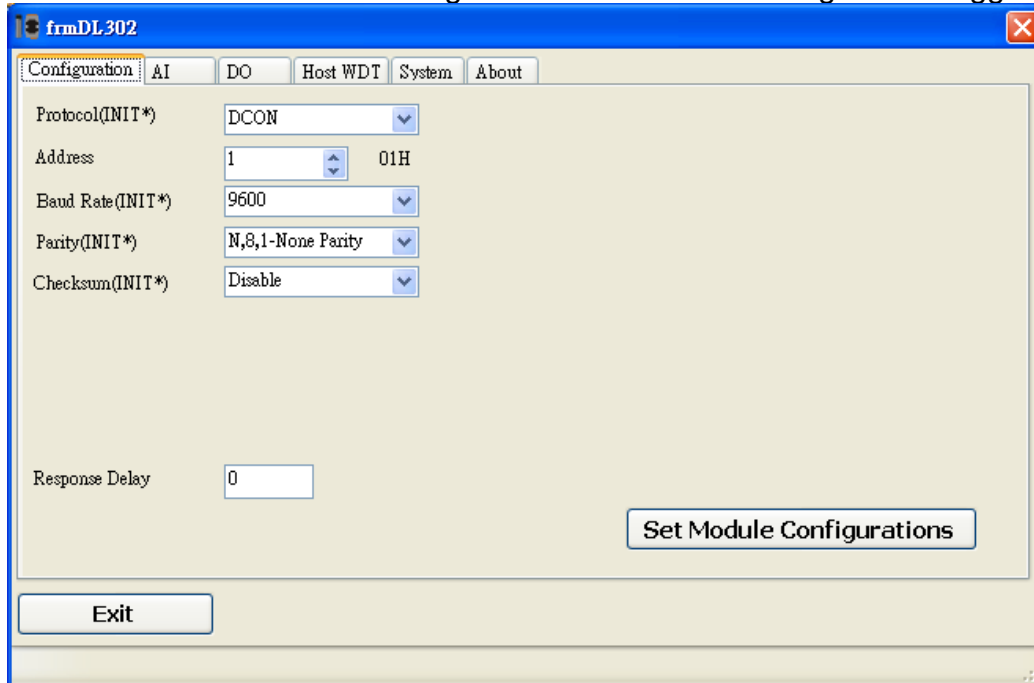
8. Click the Start Search icon.



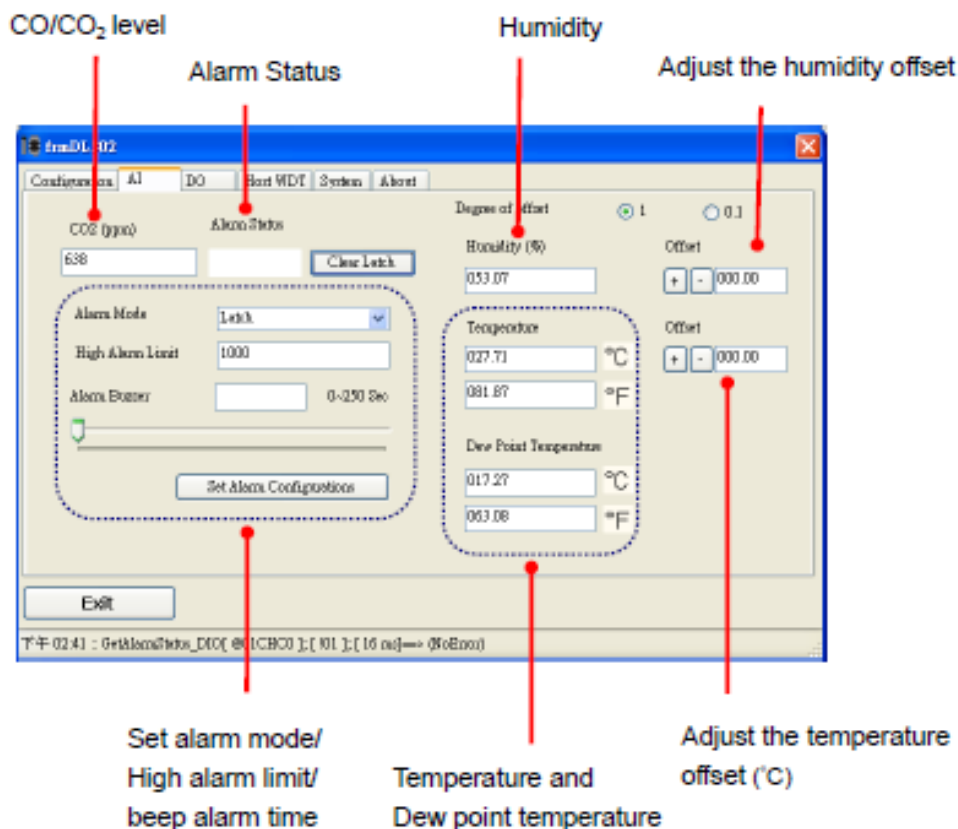
9. The DL-300 logger searched out will be listed as below.



10. Click the module name to configure communication setting for the logger.



11. Click the AI tab to configure module setting for the logger.





9. Monitoring via Mobile Devices

The iAir App can be used to monitor real-time data of CO/CO2 level, temperature and humidity anywhere and anytime without any complicated configuration. The DL-300 modules and your mobile devices such as smart phones or tablets need be addressed on the same network, and then you can get the real-time data from DL-300 loggers by entering a specific IP address, or by performing an automatic search for available devices.

If a DL-300 cannot be searched in the iAir App, please contact with the network administrator to make sure the module and your mobile devices are addressed on the same sub-network. It means that they have the same broadcast address.



- ▶ Retrieve real-time data from DL-300 devices.
- ▶ Self-defined DL-300 device groups for easy viewing.
- ▶ Set multi-language message to display on screen. The message character is based on UTF-8 encoding.
- ▶ Call DL-300 device function can recognize a specific device from the others.
- ▶ Search device function can obtain all the DL-300 devices in the LAN.

[Download iAir user manual](#)

Platform	Keyword to Search	Link	QR Code
Android	ICPDAS, CO2CO iAir		
iOS	ICPDAS, iAir		

The iAir app is available to free download in Google Play and App Store. Search “iAir”, “ICPDAS” in App Store and tap on install.

For more information about DL-301, please visit http://www.icpdas-usa.com/dl_301.html