

PPDS SERIES QUICK START GUIDE



For PPDS-700-MTCP Series

English/ August 2011/ Version 1.3

Programmable Device server with
PoE, Modbus Gateway

1 What's in the shipping package?

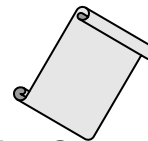
The package includes the following items:



PPDS-700-MTCP series



Software CD



**Quick Start Guide
(This Document)**



CA-0910 Cable

2 Installing software on your PC

1. Install VxComm Utility:

The software is located at:

CD: \NAPDOS\Driver\VxComm_Driver

http://ftp.icpdas.com/pub/cd/8000cd/napdos/driver/vxcomm_driver/

2. Install Modbus Utility:

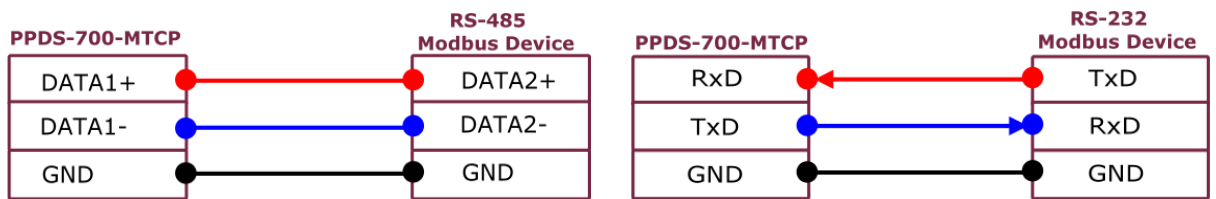
The software is located at:

CD: \NAPDOS\Modbus\modubs_utility

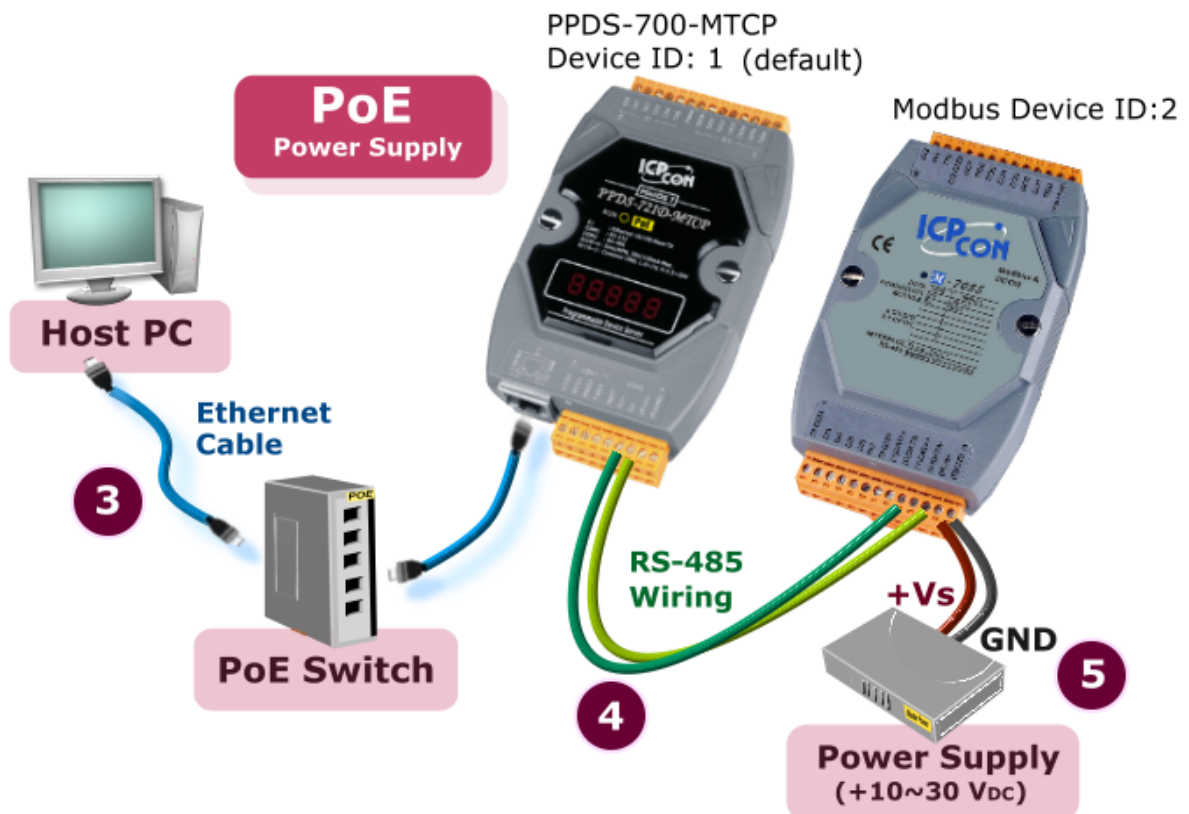
http://ftp.icpdas.com/pub/cd/8000cd/napdos/modbus/modbus_utility/

3 Connecting the Power and Host PC

1. Make sure your PC has workable network settings.
2. Disable or well configure your Windows firewall and Anti-Virus firewall first, else the "Search Servers" on page 3 may not work. (Please contact with your system Administrator)
3. Connect both the PPDS-700-MTCP and your computer to the same sub network or the same Ethernet Switch.
4. Connect the Modbus device (Ex, M-7055, optional) to PPDS-700-MTCP on COM2 (RS-485 bus).



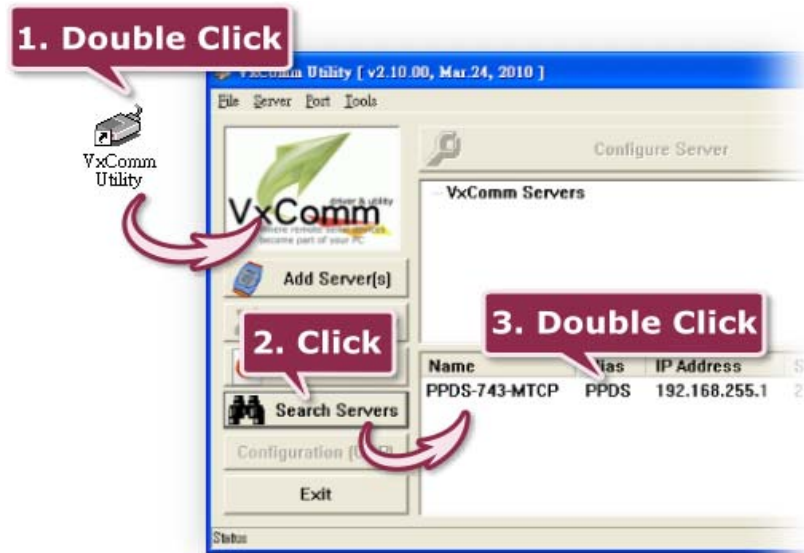
5. Supply power to the Modbus device (Ex, M-7055, Device ID: 2, +10~+30 V_{DC} power used.)



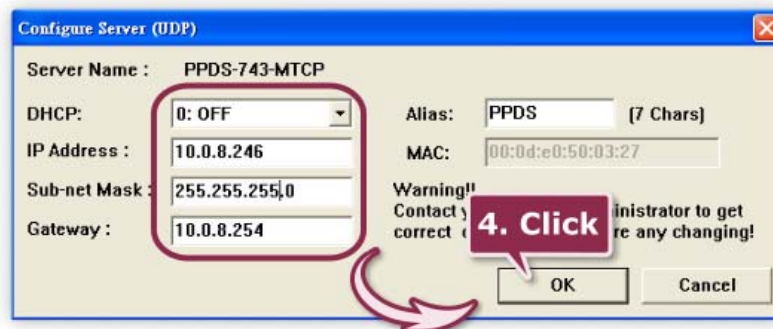
4

Configuring Virtual COM Ports

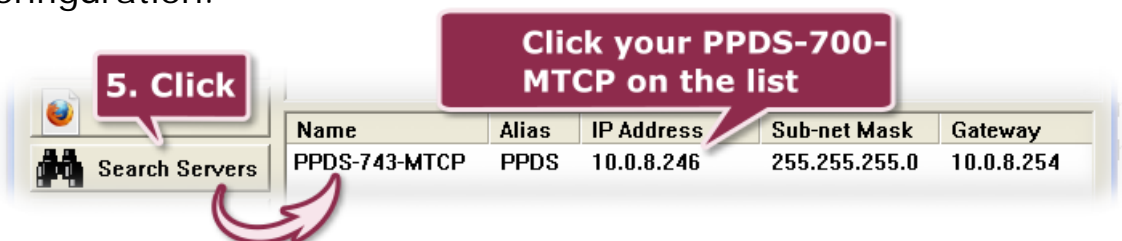
1. Double click the VxComm Utility shortcut on the desktop.
2. Click the "**Search Servers**" button to search your PPDS-700-MTCP.
3. Double click the name of PPDS-700-MTCP to open the configure server dialog box.



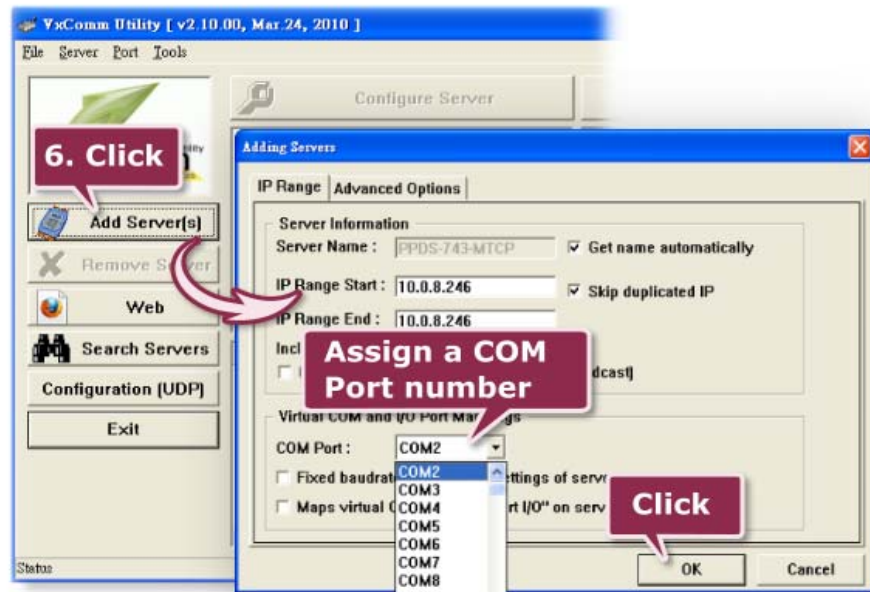
4. Contact your Network Administrator to obtain a correct network configuration (such as **IP/Mask/Gateway**). Enter the network settings and then click "**OK**". The PPDS-700-MTCP will use the new setting 2 seconds later.



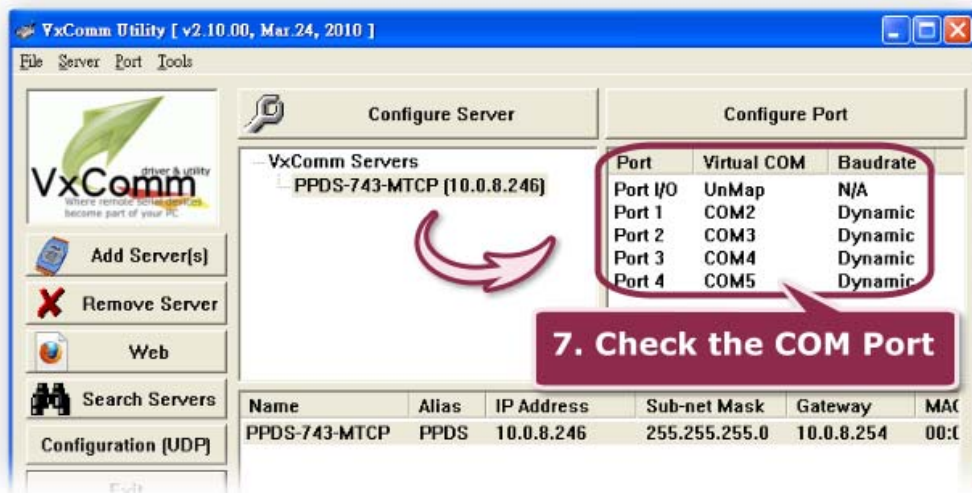
5. Wait 2 seconds and then click the "**Search Servers**" button again to ensure the PPDS-700-MTCP is working well with new configuration.



- Click the **"Add Server[s]"** button. Assign a COM Port number and click **"OK"** to save your settings.



- Click on PPDS-700-MTCP name and check the virtual COM port mappings on the PC.



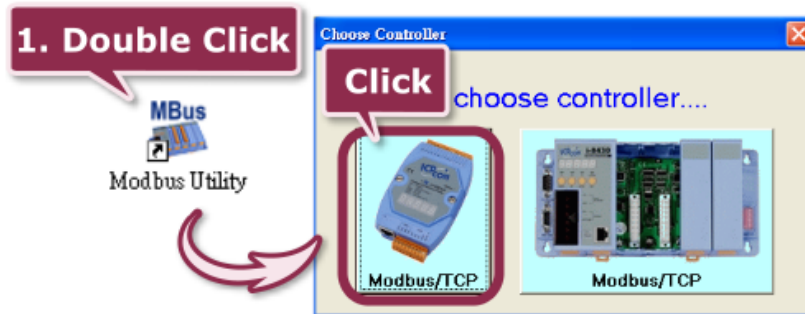
- Click **"Tools"** >> **"Restart Driver"**, and then click the **"Restart Driver"** button.



5

Testing Modbus device through Virtual COM Ports

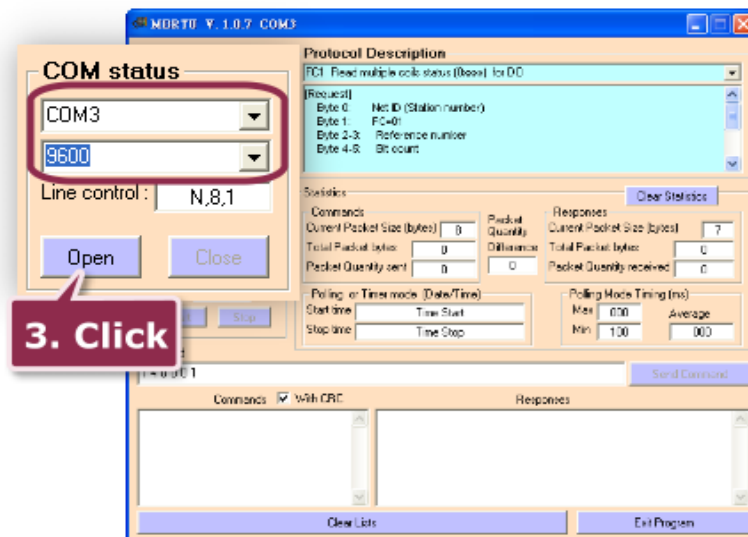
1. Double click the Modbus Utility shortcut on the desktop, and then click the **"Modbus/TCP"** button.



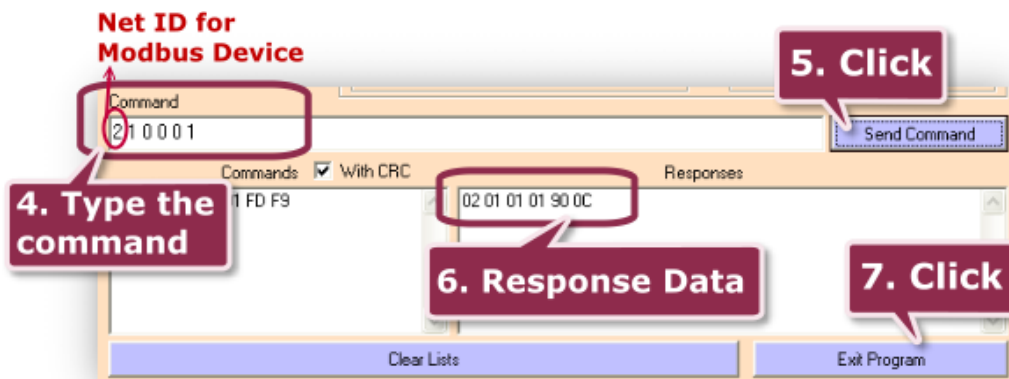
2. Click on **"Client tools"** >> **"Modbus/RTU Client"**.



3. Select your virtual COM port and baud rate (default: 9600) on PPDS-700-MTCP, and then click the **"Open"** button.



- Refer to "**Protocol Description**" and type the command in the command field then click the "**Send command**" button. If the response data is correct, it means the test is success.

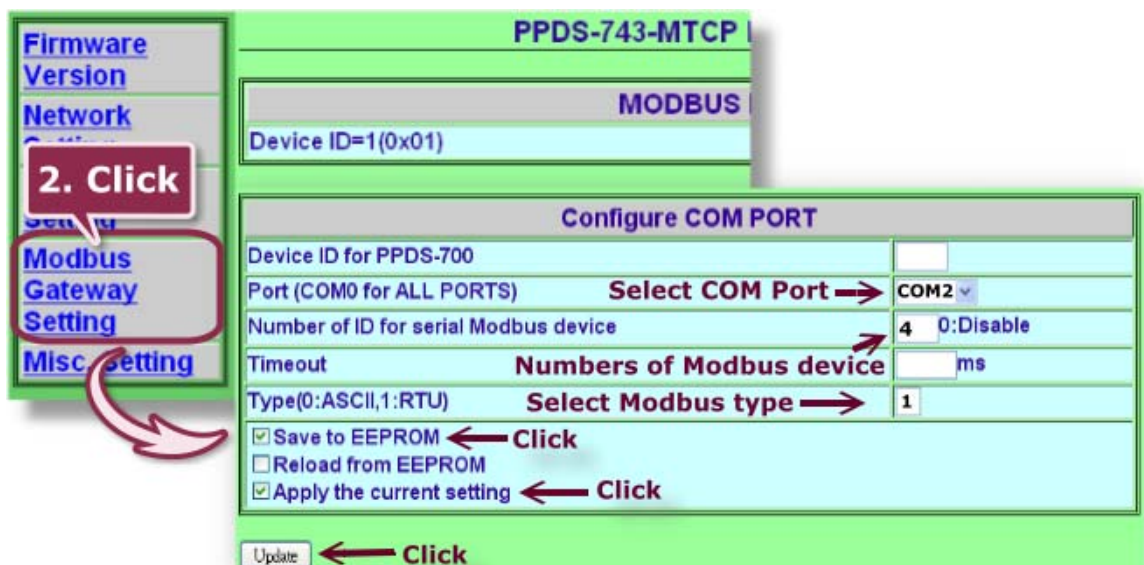


6 Modbus/TCP to Modbus/RTU Gateway

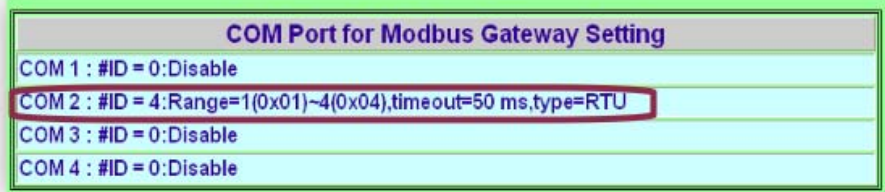
- Open web browser, type the URL address of the PPDS-700-MTCP and press "**Enter**" to connect to the PPDS-700-MTCP.



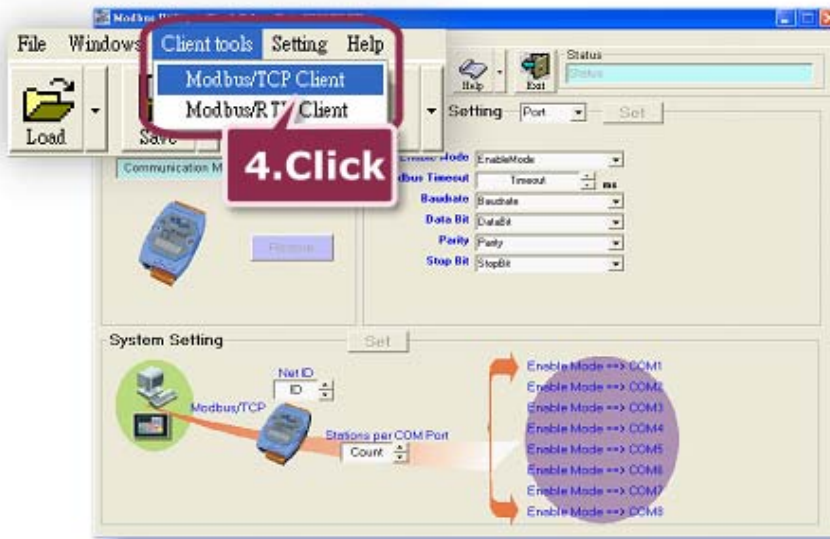
- Click the "**Modbus Gateway Setting**" in the web page to configure the COM ports. Click the "**Save to EEPROM**" and "**Apply the Current Setting**", and then "**Update**" button to update it to PPDS-700-MTCP.



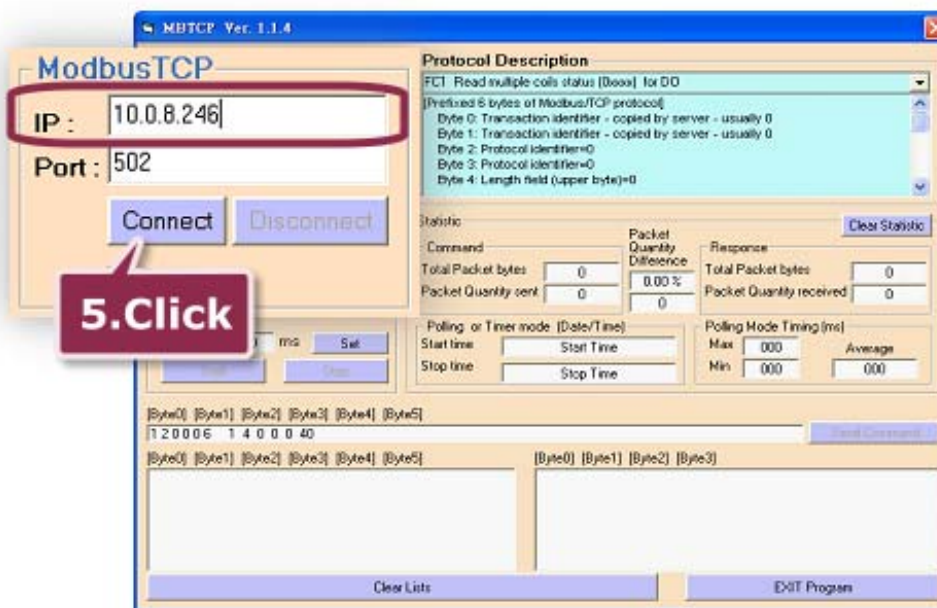
3. Check the COM Port for Modbus gateway setting.



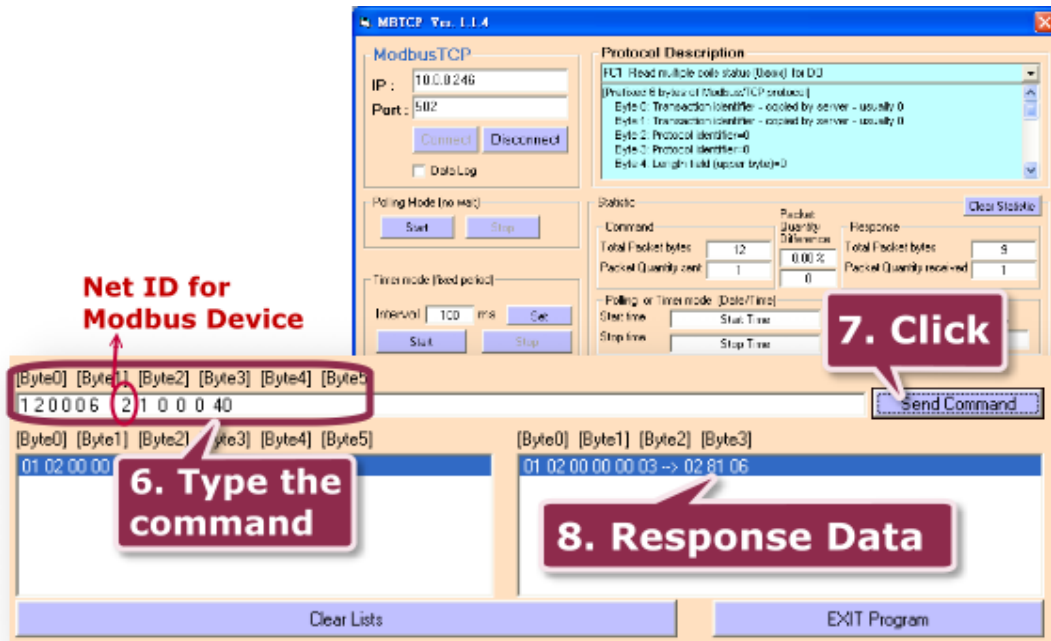
4. Back to Modbus Utility, and then click the "**Client tools**" >> "**Modbus/TCP Client**".



5. Enter the IP address of PPDS-700-MTCP and then click "**Connect**" button to connect the PPDS-700-MTCP.



- Refer to "**Protocol Description**" and type command in the command field then click the "**Send Command**" button. If the response data is correct, it means the test is success.



Note!!

The flash protection function is disabled for factory default settings. User can modify the program or update the firmware. If you want to enable flash protection function, refer to user manual section 3.9 Flash Protection Function.

CD:\NAPDOS\PDS\PDS-700\Document\
<http://ftp.icpdas.com/pub/cd/8000cd/napdos/pds/pds-700/document/>

Related Information

- **PPDS-700-MTCP Series product page:**
http://www.icpdas.com/products/Industrial/pds/PPDS-700_Series.htm
- **PPDS-700-MTCP documentations:**
 CD:\Napdos\pds\ppds-700-mtcp\document\
<http://ftp.icpdas.com/pub/cd/8000cd/napdos/pds/ppds-700-mtcp/document/>
- **PPDS-700-MTCP firmware:**
 CD:\Napdos\pds\ppds-700-mtcp\vxcomm\server(tds)\
[http://ftp.icpdas.com/pub/cd/8000cd/napdos/pds/ppds-700-mtcp/vxcomm/server\(pds\)/](http://ftp.icpdas.com/pub/cd/8000cd/napdos/pds/ppds-700-mtcp/vxcomm/server(pds)/)
- **M-7055 (optional) product page:**
http://www.icpdas.com/products/Remote_IO/i-7000/i-7055d.htm



ICP DAS Web Site: <http://www.icpdas.com>
 Contact Us (E-Mail): Service@icpdas.com