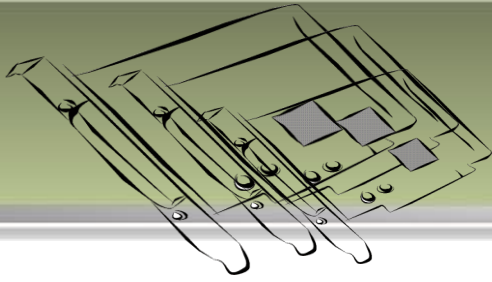


# I/O CARD QUICK START GUIDE

## For PCI-M512/M512U

English/ Jun. 2013/ Version 1.2



# 1

## What's in the shipping package?

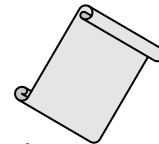
The package includes the following items:



PCI-M512/M512U



Software Utility CD  
(V5.2 or later)



Quick Start Guide  
(This Document)

# 2

## Installing Windows Driver

**Step 1: Setup the Windows driver. The driver is located at:**

- The UniDAQ driver supports 32-/64-bit Windows 2K/XP/2003/Vista/7/8; it is recommended to install this driver for new user:  
CD: \NAPDOS\PCI\UniDAQ\DLL\Driver  
<http://ftp.icpdas.com/pub/cd/iocard/pci/napdos/pci/unidaq/dll/driver/>
- The PCI-M512 Series classic driver supports Windows 98/NT/2K and 32-bit XP/ 2003/ Vista/7/8. Recommended to install this driver for have been used PCI-M512 series boards of regular user, please refer to :  
<http://ftp.icpdas.com/pub/cd/iocard/pci/napdos/pci/pci-m512/manual/quickstart/classic/>

**Step 2:** Click the "**N**ext>" button to start the installation.

**Step 3:** Check your DAQ Card is or not on supported list, then click the "**N**ext>" button.

**Step 4:** Select the installed folder, the default path is C:\ICPDAS\UniDAQ , confirm and click the "**N**ext>" button.

**Step 5:** Check your DAQ Card on list, then click the "**N**ext>" button.

**Step 6:** Click the "**N**ext>" button on the **Select Additional Tasks** window.

**Step 7:** Click the "**N**ext>" button on the **Download Information** window.

**Step 8:** Select "**No, I will restart my computer later**" and then click the "**F**inish" button.

*For detailed information about the driver installation, please refer to Chapter 2.1 "Getting the UniDAQ Driver DLL Installer package" of the UniDAQ SDK user manual.*

## 3 Installing Hardware on PC

**Step 1:** Shut down and power off your computer.

**Step 2:** Remove the cover from the computer.

**Step 3:** Select an unused PCI slot.

**Step 4:** Carefully insert your I/O card into the PCI slot.

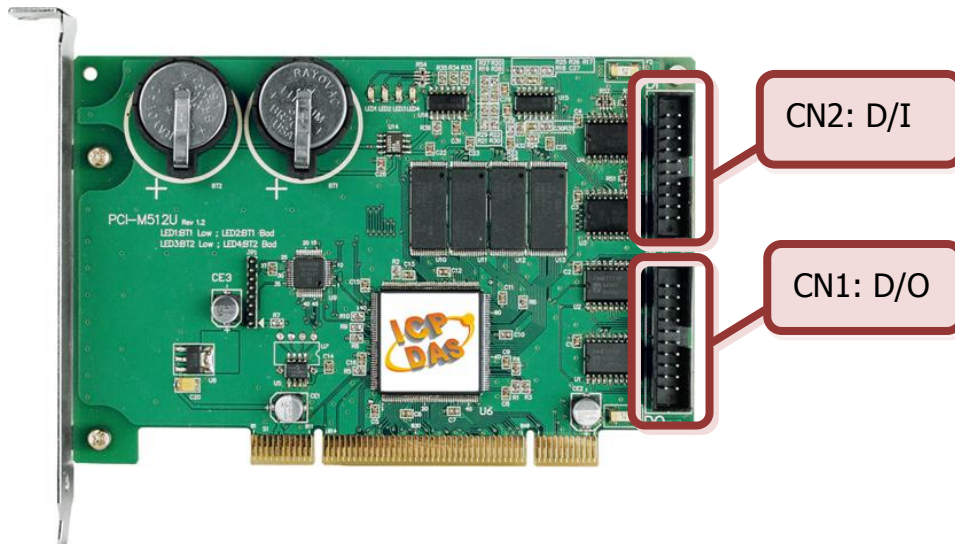
**Step 5:** Replace the PC cover.

**Step 6:** Power on the computer.

**After powering-on the computer, please finish the Plug&Play steps according to the prompted messages.**

# 4

## Pin Assignments

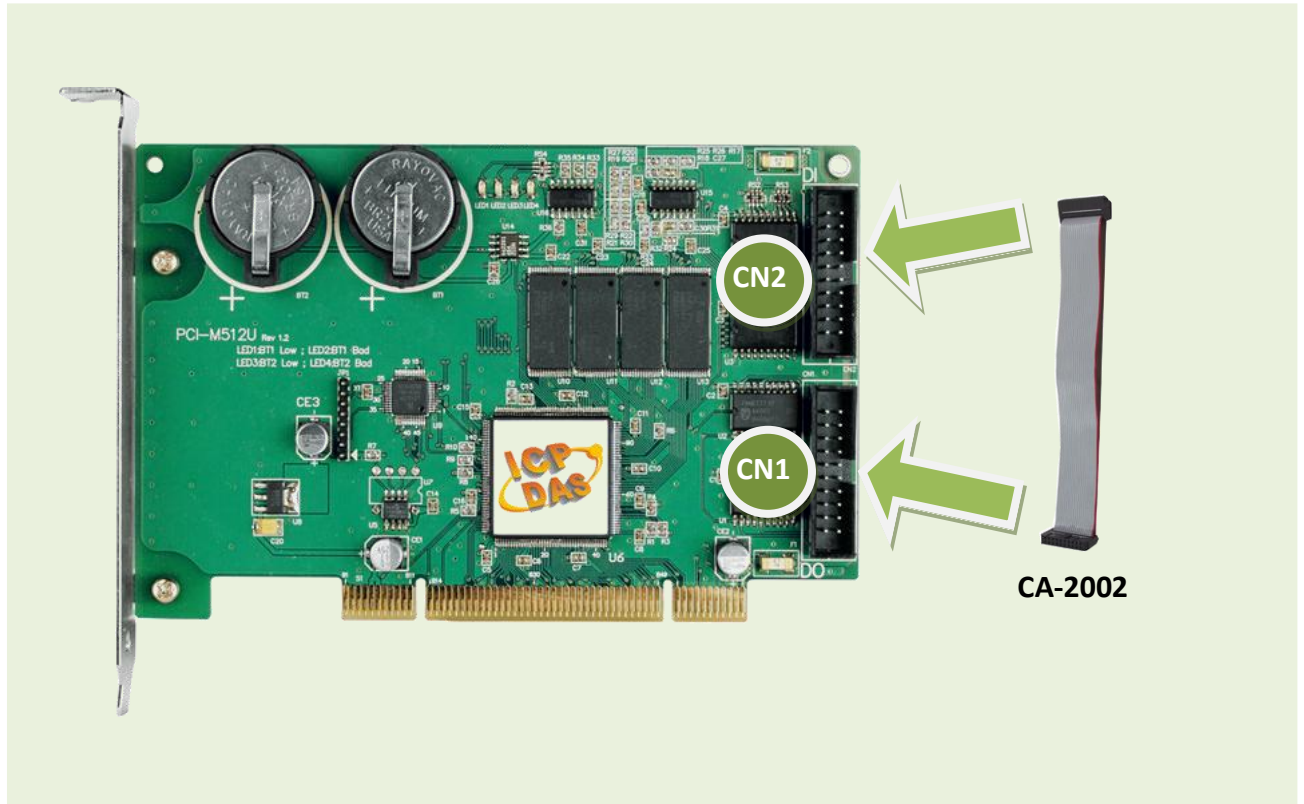


- **CN1 Digital Output connector** (20-pin box header)
- **CN2 Digital Input connector** (20-pin box header)

Pin Assignment	Terminal No.	Pin Assignment	Terminal No.	Pin Assignment
DO 0	01	○ ○	02	DO 1
DO 2	03	○ ○	04	DO 3
DO 4	05	○ ○	06	DO 5
DO 6	07	○ ○	08	DO 7
DO 8	09	○ ○	10	DO 9
DO 10	10	○ ○	12	DO 11
DO 12	12	○ ○	14	DO 13
DO 14	14	○ ○	16	DO 15
GND	16	○ ○	18	GND
+5V	18	○ ○	20	+12V
CN1				
Pin Assignment	Terminal No.	Pin Assignment	Terminal No.	Pin Assignment
	01	○ ○	02	
	03	○ ○	04	
DI 4	05	○ ○	06	DI 5
DI 6	07	○ ○	08	DI 7
DI 8	09	○ ○	10	DI 9
DI 10	11	○ ○	12	DI 11
DI 12	13	○ ○	14	DI 13
DI 14	15	○ ○	16	DI 15
GND	17	○ ○	18	GND
+5V	19	○ ○	20	+12V
CN2				

# 5 Self-Test

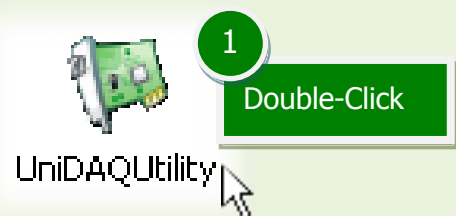
1. Use CA-2002 (optional) to connect the CN1 with CN2.



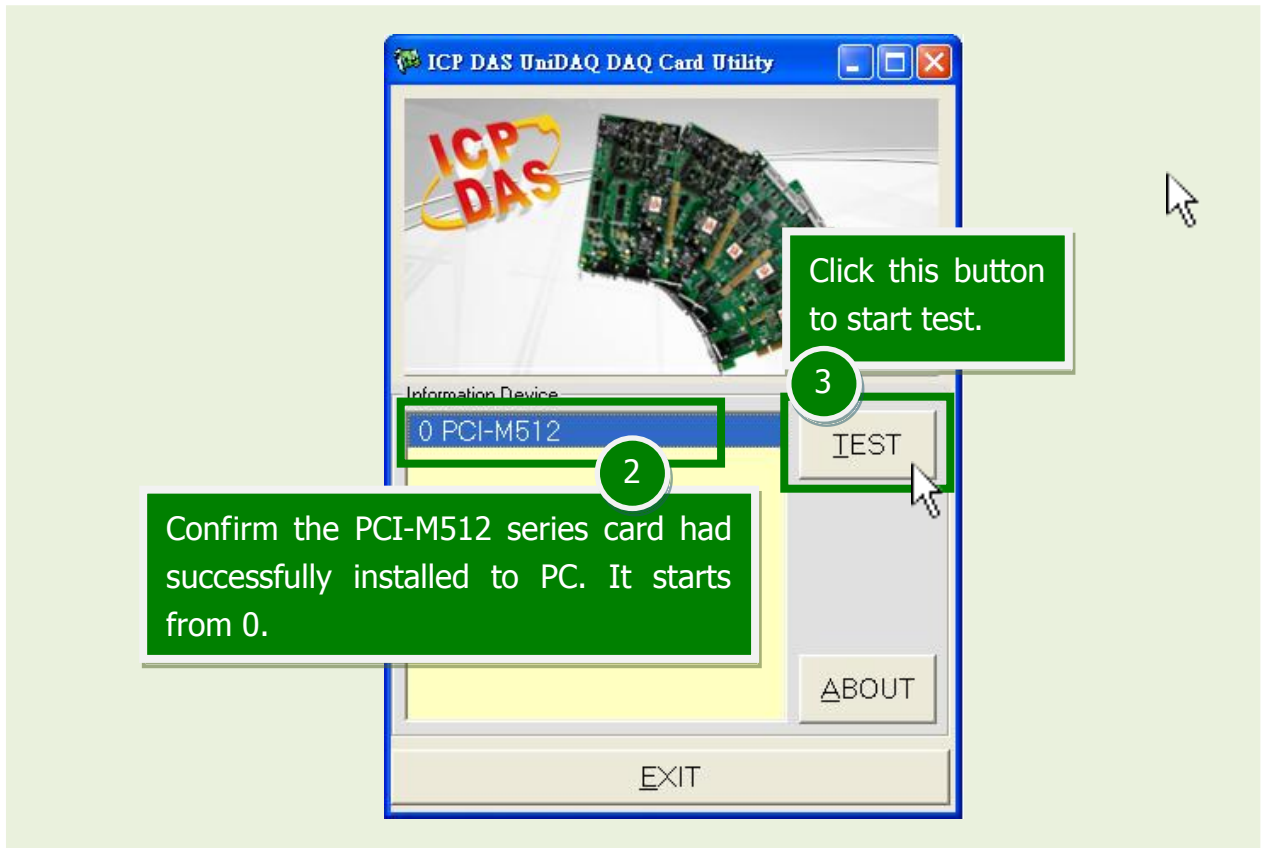
2. The UniDAQ Utility.exe is located in:

This program (UniDAQ Utility) will be placed in the default path after completing installation.

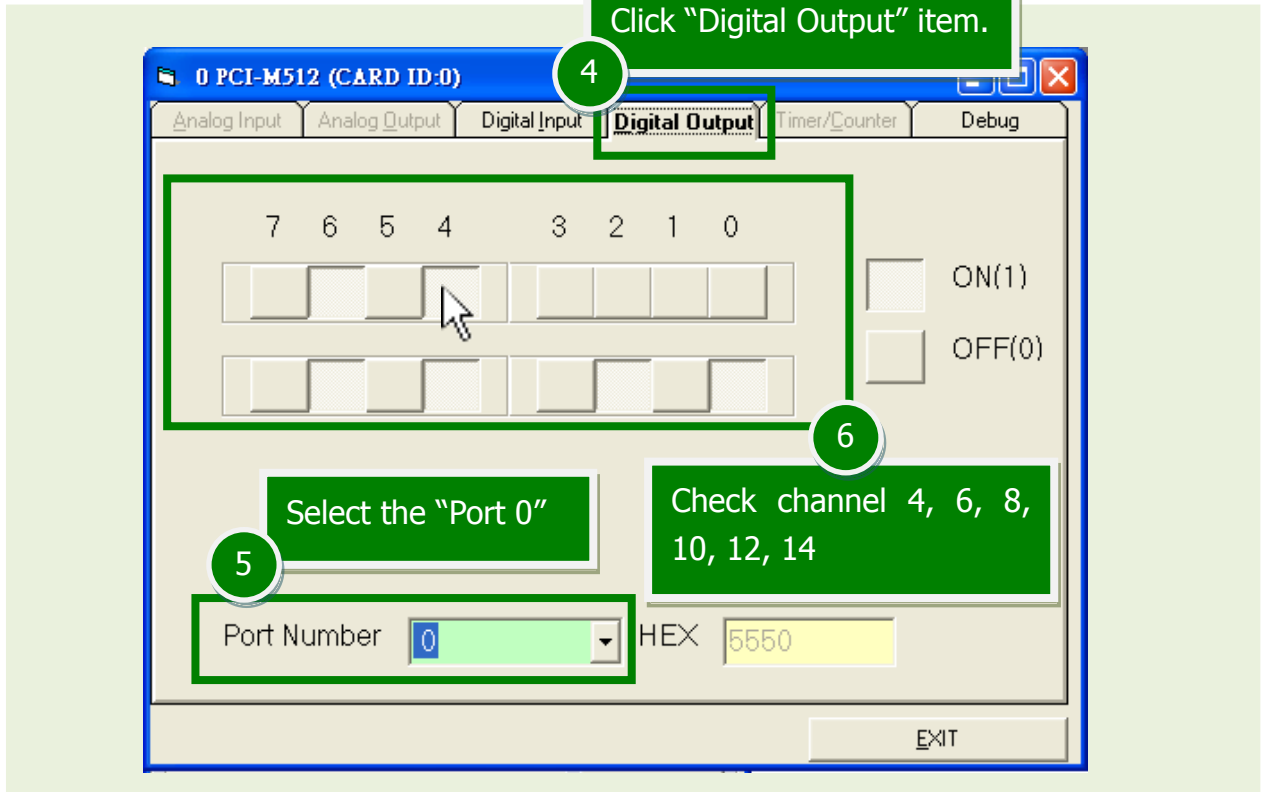
Default Path: C:\ICPDAS\UniDAQ\Driver\  
Double click the "UniDAQUtility.exe"

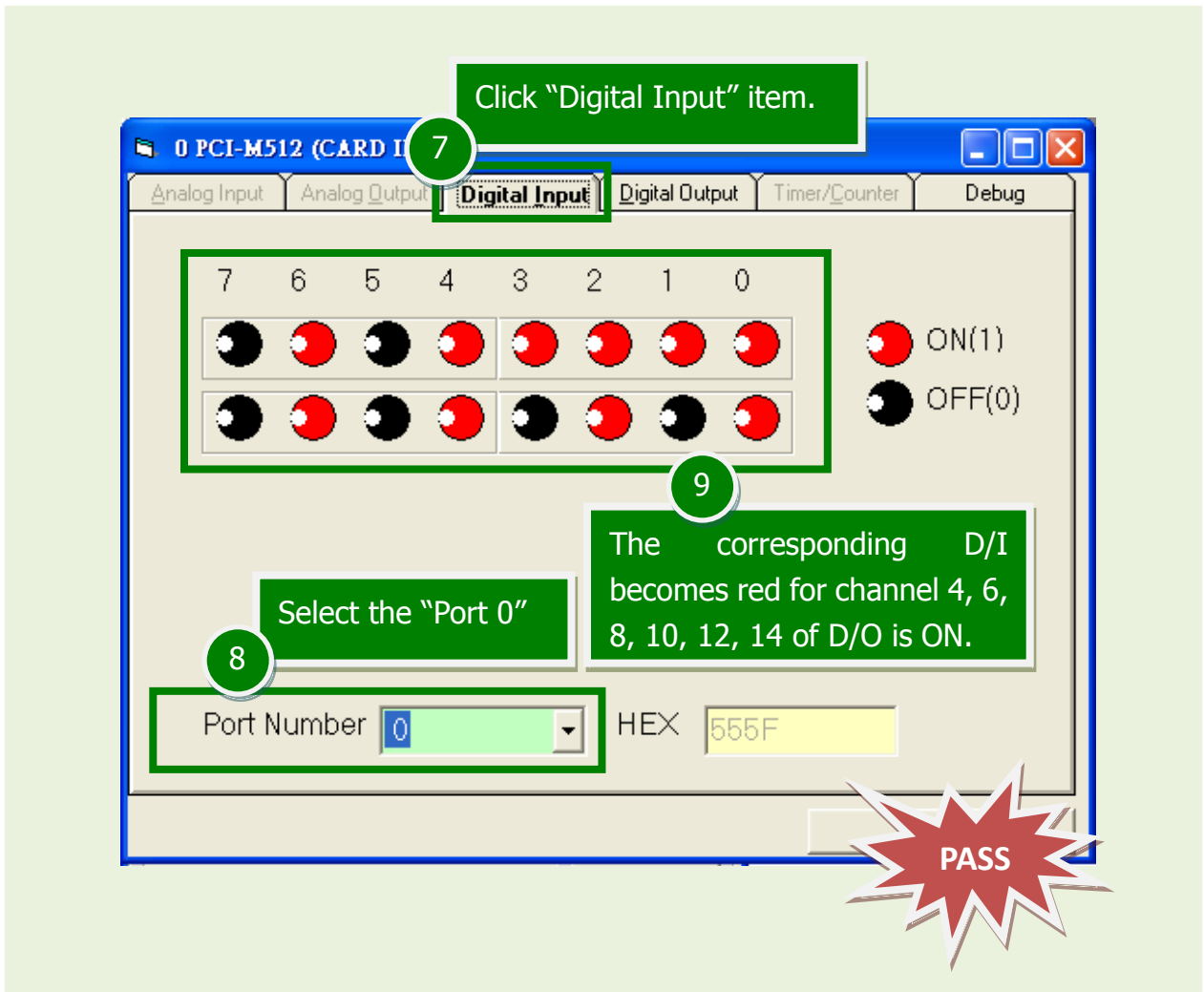


### 3. Execute the UniDAQ Utility Program.



### 4. Get DIO function test result.





## 6 Related Information

- PCI-M512 series card product page:  
[http://www.icpdas.com/root/product/solutions/pc\\_based\\_io\\_board/pci/pci-m512.html](http://www.icpdas.com/root/product/solutions/pc_based_io_board/pci/pci-m512.html)
- CA-2002 page (optional):  
[http://www.icpdas.com/products/Accessories/cable/cable\\_selection.htm](http://www.icpdas.com/products/Accessories/cable/cable_selection.htm)
- Documentation and Software:  
 CD:\NAPDOS\PCI\UniDAQ\  
<http://ftp.icpdas.com/pub/cd/iocard/pci/napdos/pci/unidaq/>