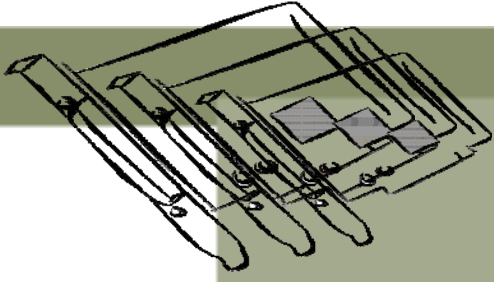


# I/O CARD QUICK START GUIDE



*for PCI-1800 LU/HU  
PCI-1802 LU/HU*

English/ May 2010/ Version 1.0

## 1

### What's in the shipping package?

- One PCI-1800/1802 (LU/HU) series card
- One companion PCI CD (V4.8 or later)
- One Quick Start Guide (This document)
- One CA-4002 D-Sub connector



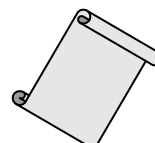
**PCI-1800/1802 (LU/HU)  
Series Card**



**Software Utility CD**



**CA-4002 D-Sub Connector**



**Quick Start Guide**

# 2

## Installing Windows Driver

Follow these steps:

1. Setup the Windows driver. The driver is located at:

CD:\NAPDOS\PC\PCI-180x\DLL\_OCX\

[http://ftp.icpdas.com/pub/cd/iocard/pci/napdos/pci/pci-180x/dll\\_ocx/](http://ftp.icpdas.com/pub/cd/iocard/pci/napdos/pci/pci-180x/dll_ocx/)

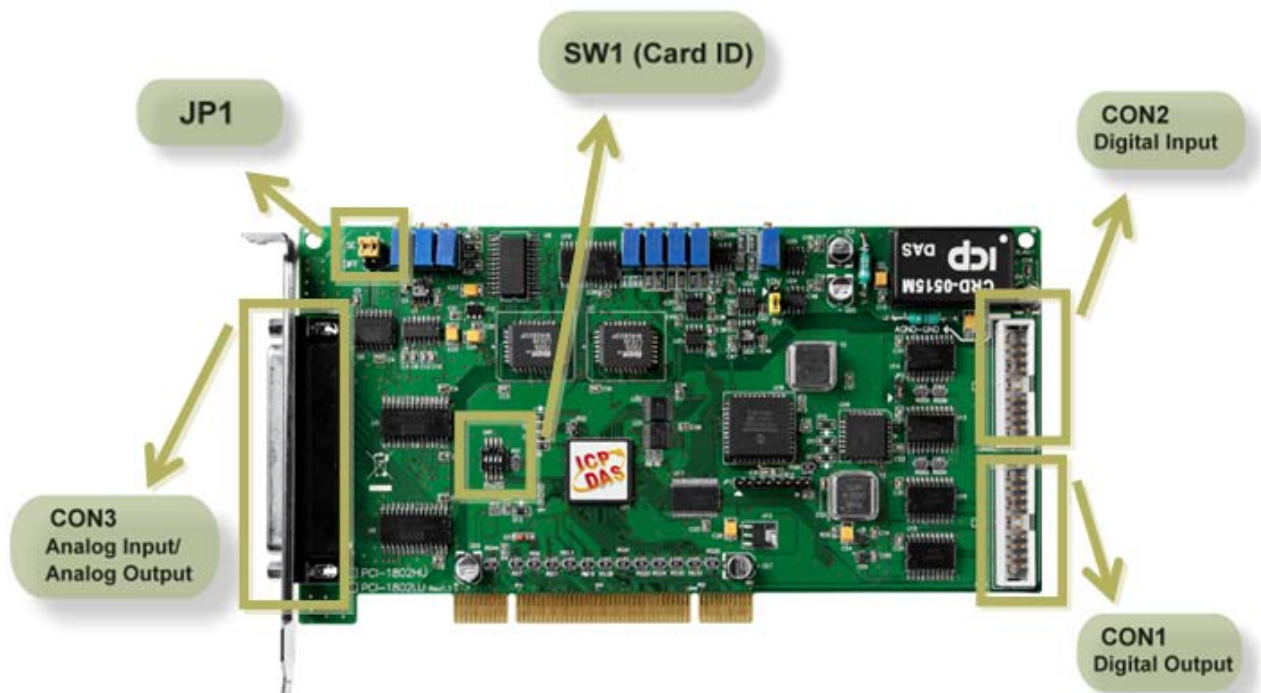


The Windows driver only supports Windows 98/NT/2000/ and 32-bit Windows XP/2003/Vista/7 Versions.

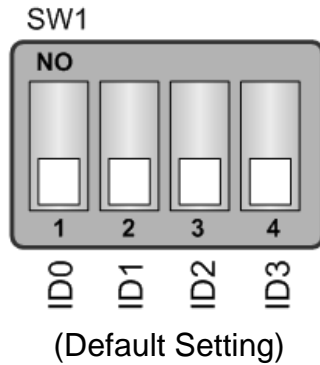
2. Click the “Next>” button to start the installation.
3. Click the “Next>” button to install the driver into the default folder.
4. Click the “Install” button to continue the installation.
5. Select “NO, I will restart my computer later” and then click the “Finish” button.

# 3

## Setting Jumper & Card ID



## SW1 Card ID Setting

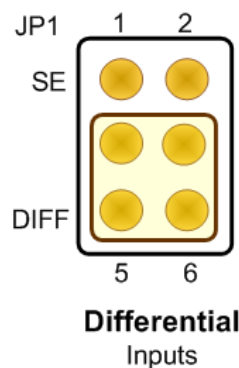
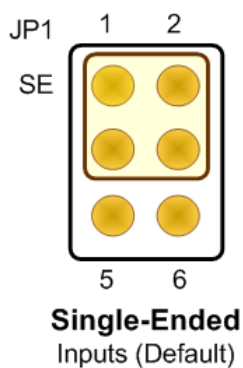


Card ID	1 ID0	2 ID1	3 ID2	4 ID3
(*) 0	OFF	OFF	OFF	OFF
1	ON	OFF	OFF	OFF
2	OFF	ON	OFF	OFF
:	:	:	:	:
13	ON	OFF	ON	ON
14	OFF	ON	ON	ON
15	ON	ON	ON	ON

(\*) Default setting

## JP1: Analog Input Type Selection.

(Please make sure JP1 jumper is kept in default setting before self-test.)



# 4

## Installing Hardware on PC

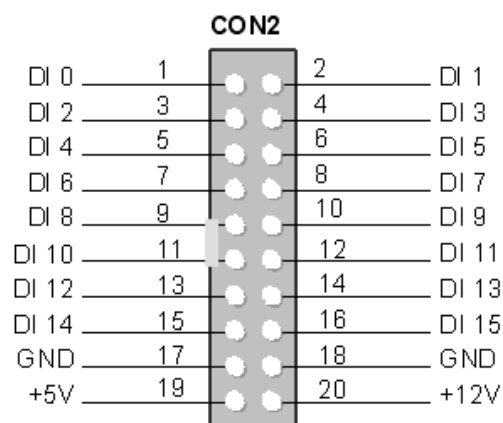
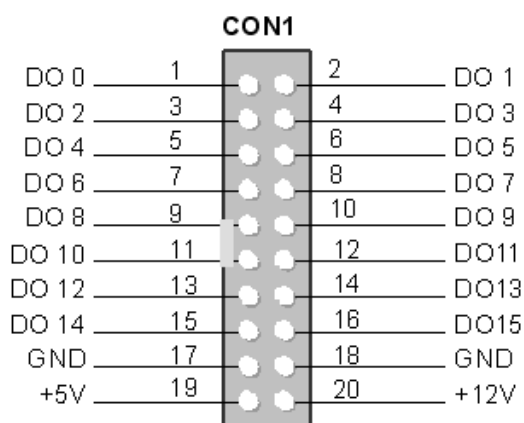
Follow these steps:

1. Shut down and power off your computer.
2. Remove the cover from the computer.
3. Select an unused PCI slot.
4. Insert your I/O card into the PCI slot carefully.
5. Replace the PC cover.
6. Power on the computer.

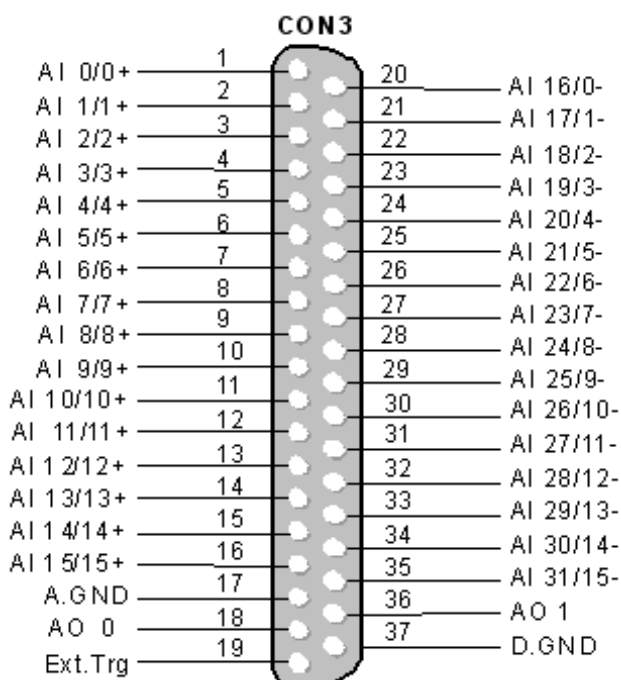
After powering-on the computer, please finish the Plug&Play steps according to the prompted messages.

# 5 Pin Assignments

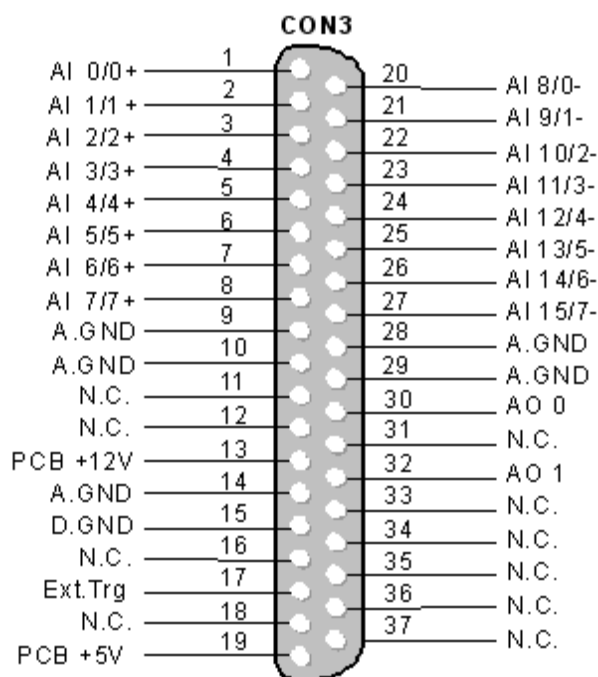
- **CON1 Digital Output connector** (20-pin box header)
- **CON2 Digital Input connector** (20-pin box header)



- **CON3 Analog Input Connector** (Female DB37)



**PCI-1802LU/HU**  
32-ch Single-Ended/  
16-ch Differential



**PCI-1800LU/HU**  
16-ch Single-Ended/  
8-ch Differential

# 6 Self Testing

## ■ DIO Test Wiring:

1. Use CA-2002 (optional) to connect the CON1 with CON2.

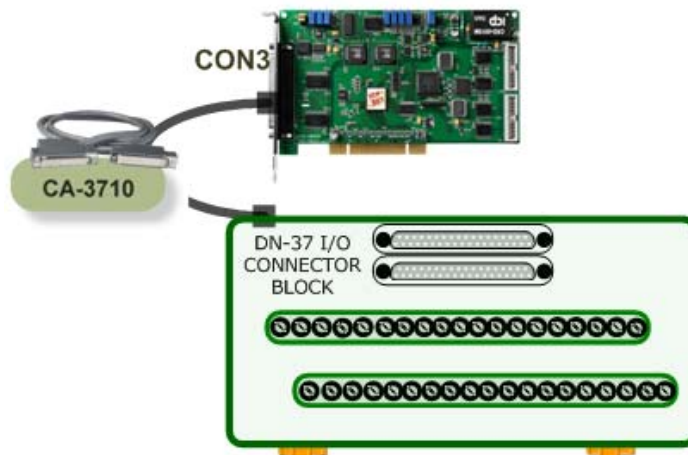


## ■ Analog Input Test Wiring:

### 2. Prepare for device:

- DN-37 (optional) wiring terminal board.
- Provide a stable signal source. (For example, dry battery)

3. Connect a DN-37 to the COM3.



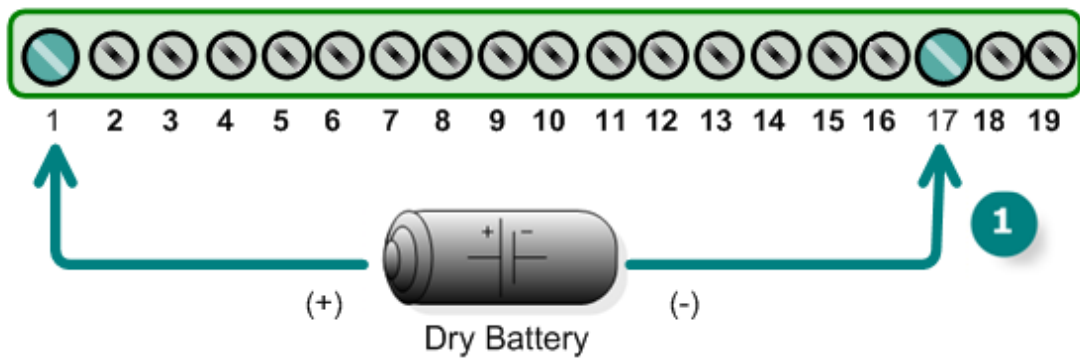
#### 4. Wire the signal source to channel 0.

Keep set the JP1 jumper to Single-Ended (page 3), and wire the signals as follows:

##### 1 For PCI-1802 LU/HU:

Connect the AI 0 (Pin1) to signal positive (+)

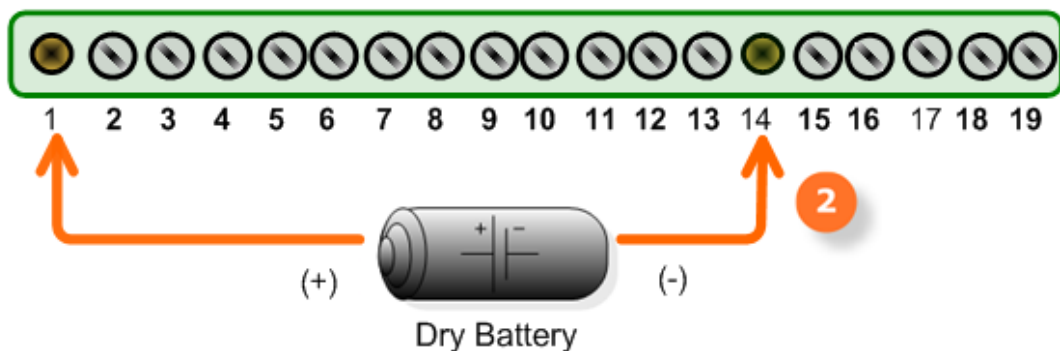
Connect the A.GND (Pin17) to signal negative (-)



##### 2 For PCI-1800 LU/HU:

Connect the AI 0 (Pin1) to signal positive (+)

Connect the A.GND (Pin14) to signal negative (-)



## Execute the PCI-1800/1802 (LU/HU) sample program:

### 5. The sample program is contained in:

CD:\NAPDOS\PCI\PCI-180x\DLL\_OCX\Demo\

[http://ftp.icpdas.com/pub/cd/iocard/pci/napdos/pci/pci-180x/dll\\_ocx/demo/](http://ftp.icpdas.com/pub/cd/iocard/pci/napdos/pci/pci-180x/dll_ocx/demo/)

### 6. The following sample program is written in Delphi.

File: DLL\_Delphi3\_XXXXXX.exe

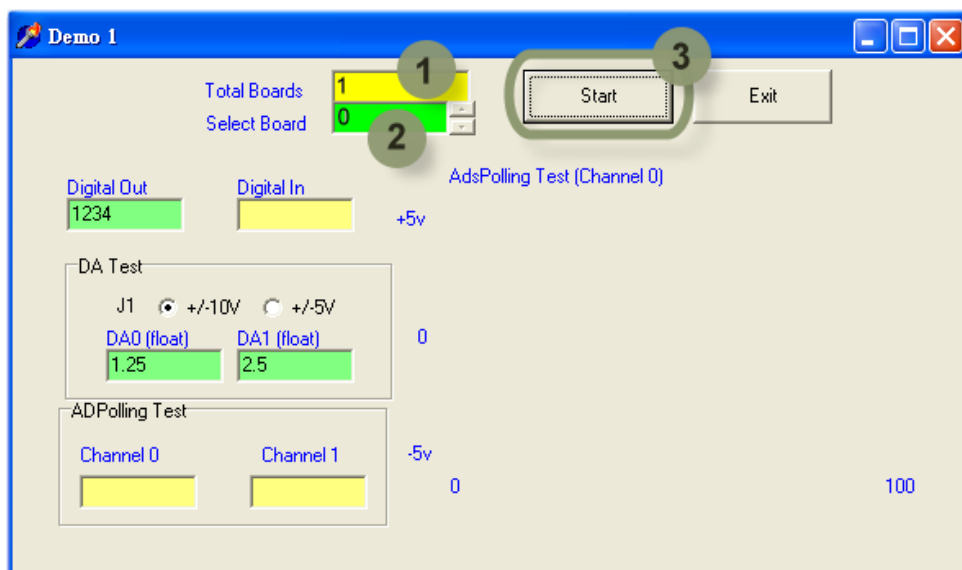
Path: ....\DLL\_Delphi3\01\

Double click the "Demo1.exe"



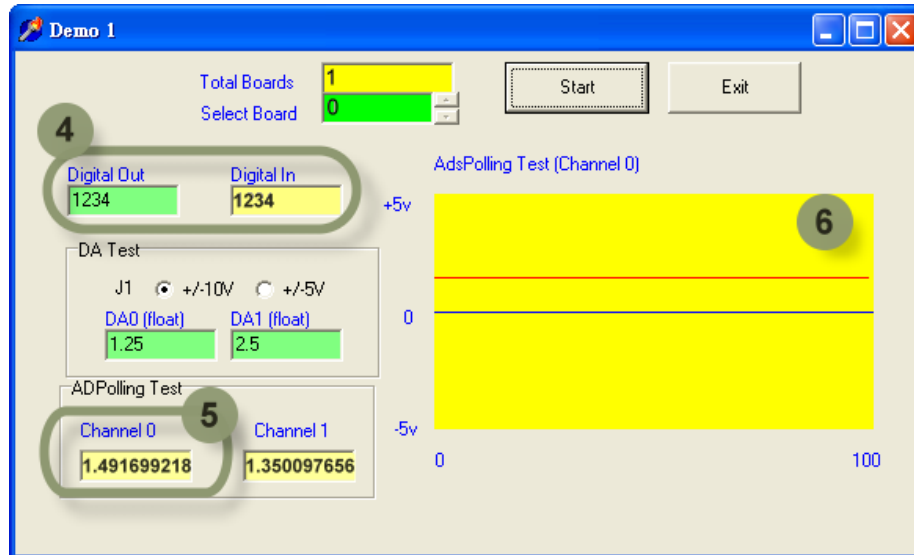
### 7. Verify total numbers of the PCI-1800/1802 (LU/HU) card and perform AI, DIO functions test.

- 1 Confirm the number of PCI-180x cards installed successfully on this PC.
- 2 Select the board to activate. (It ranges from 0 to total board number subtracting one)
- 3 Click this button to start test.



## 8. Get AI and DIO function test result.

- 4 Check the "Digital Out" value (write) and "Digital In" value (read) should be identical.
- 5 Check analog input on CH0 textbox.
- 6 Check continual analog input on CH0.



## Related Information

- ❏ **PCI-1800/1802 LU/HU Series Card product page:**  
[http://www.icpdas.com/products/DAQ/pc\\_based/pci\\_1800.htm](http://www.icpdas.com/products/DAQ/pc_based/pci_1800.htm)
- ❏ **CA-3710, CA-2002 and DN-37 page (optional):**  
[http://www.icpdas.com/products/Accessories/cable/cable\\_selection.htm](http://www.icpdas.com/products/Accessories/cable/cable_selection.htm)  
[http://www.icpdas.com/products/DAQ/screw\\_terminal/dn\\_37.htm](http://www.icpdas.com/products/DAQ/screw_terminal/dn_37.htm)
- ❏ **Documentation:**  
CD:\NAPDOS\PCI\PCI-180x\Manual  
<http://ftp.icpdas.com/pub/cd/iocard/pci/napdos/pci/pci-180x/manual/>
- ❏ **Software:**  
CD:\NAPDOS\PCI\PCI-180x  
<http://ftp.icpdas.com/pub/cd/iocard/pci/napdos/pci/pci-180x>

