

I-7567

USB to HART Converter

Quick Start User Guide

1. Introduction

This manual introduces the I-7567's basic setting and operation. The user can refer to the user manual in the ICP DAS companion CD-ROM (Path: "CD:\hart\convert\I-7567>manual\I-7567_quickstart_v1.0.pdf") for detail. The manual is intended to help users quickly understanding and easily using of I-7567. We use a I-7567 (as a HART master), one HART slave and one PC to make a simple application here, as shown in figure 1. The PC is prepared for setting and operating the I-7567.

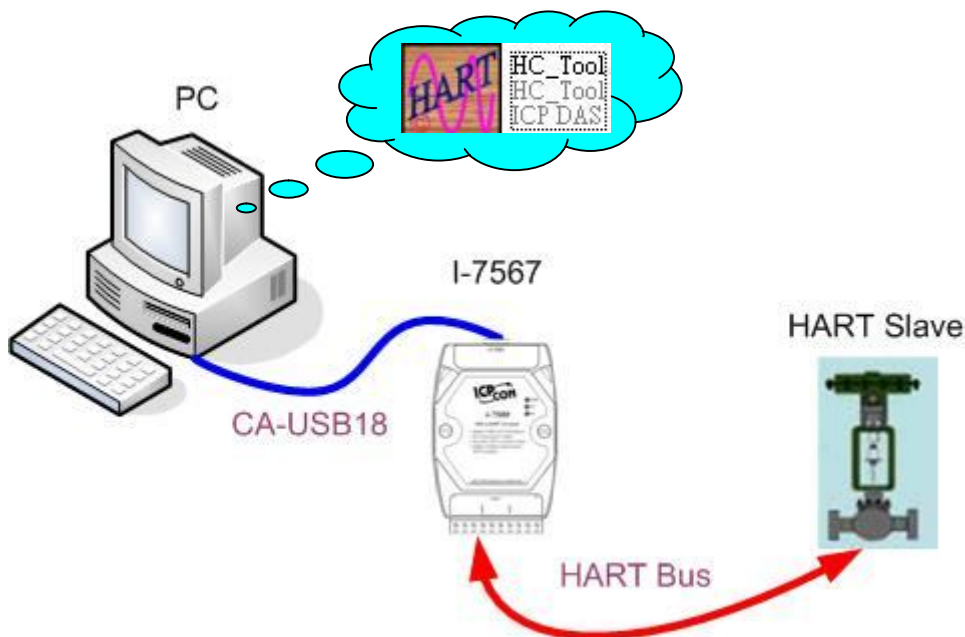


Figure 1: Application example

2. Hardware Installation

Users may need to make a hardware setting before the application. The detailed illustration is as below :

[Step1: USB connection & Install I-7567 Driver]

Connect the USB ports of the I-7567 to PC respectively. Then users can refer to the “Driver Installation” chapter in the user’s manual to complete the I-7567 driver installation.

[Step2: Check the LED Indication I-7567]

If the driver install success, the PWR LED is on.

LED Name	Power off	No Driver	Firmware Updating	Firmware Operation	Receiving HART Frame from PC	Receiving HART Frame from HART Device
PWR LED	off	flash	off	on	on	on
Tx LED	off	flash	off	off	flash	off
Rx LED	off	flash	off	off	off	flash

[Step3: Open or close the 250Ω resistor]

The user can sets the DIP switch to open resistor as Figure 2-1 or close resistor as Figure 2-2. The factory default settings is set “Off”.

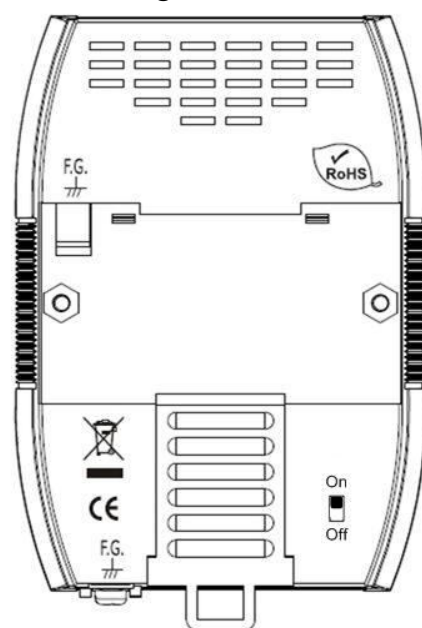
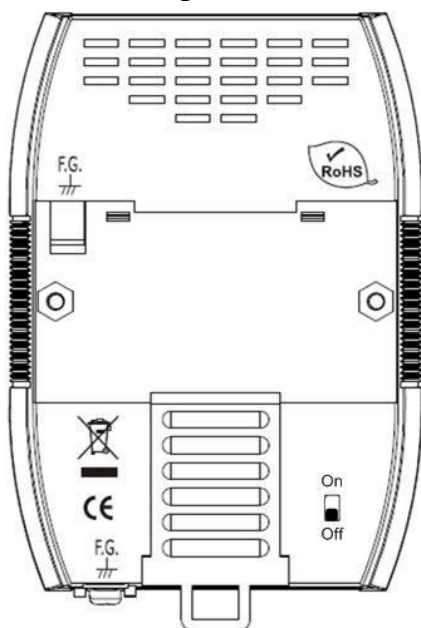


Figure 2-1: Close Internal Resistor

Figure 2-2: Open Internal Resistor

[Step4: HART bus connection]

Connect the HART port of the I-7567 to HART Device.

3. Using I-7567 Utility

Step1: Set the resistor on the back of the I-7567 and turn on the DC power. The PWR LED of the I-7567 will be always turned on. It means the I-7567 converters are working in the “Firmware Operation” mode.

Step2: Run the “I-7567 Utility”, HC_Tool.exe, and configure the connection parameters (please check the virtual com port number Figure 3-1) and then click the “Settings” of menu like Figure 3-2.

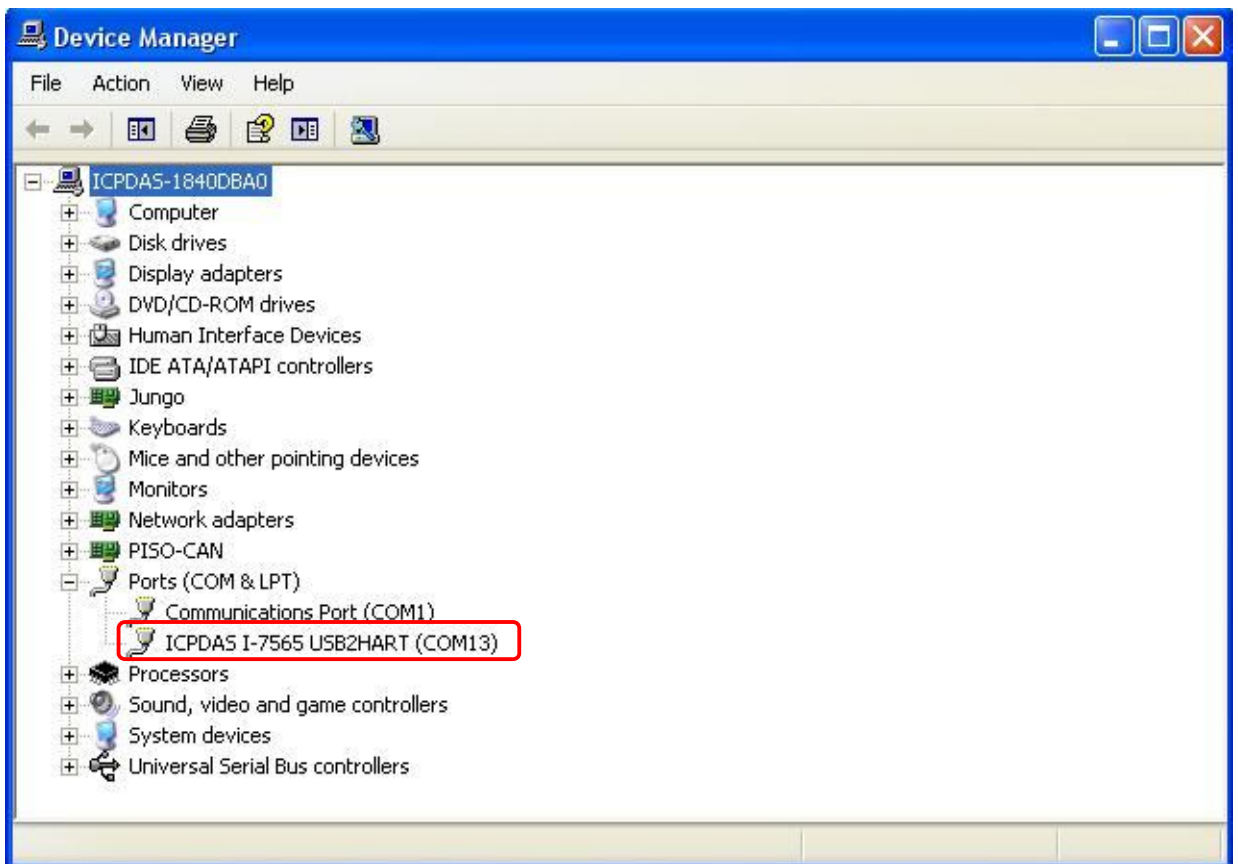


Figure 3-1: The Virtual COM Port Number

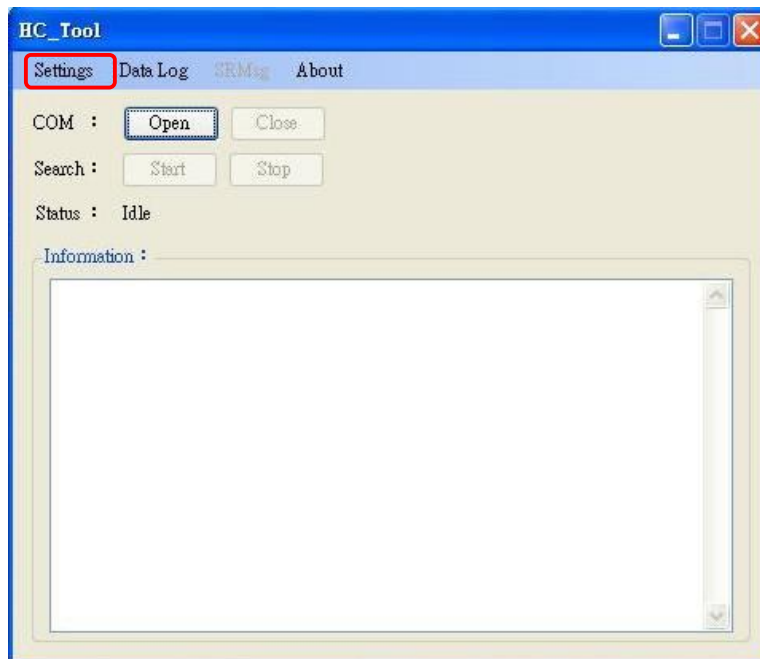


Figure 3-2: Open the “Settings” of menu

Step3: Set “Port Name” and “Auto Configure“ like Figure 3-3.

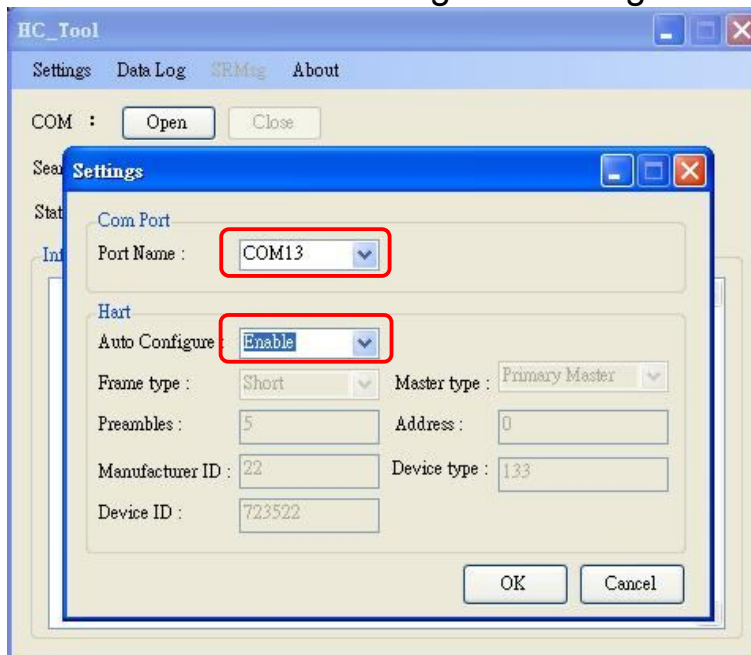


Figure 3-3: Set Com Port and HART status

Step4: Click the “Open” button to connect to the I-7567 module after closing “settings” like Figure 3-4.

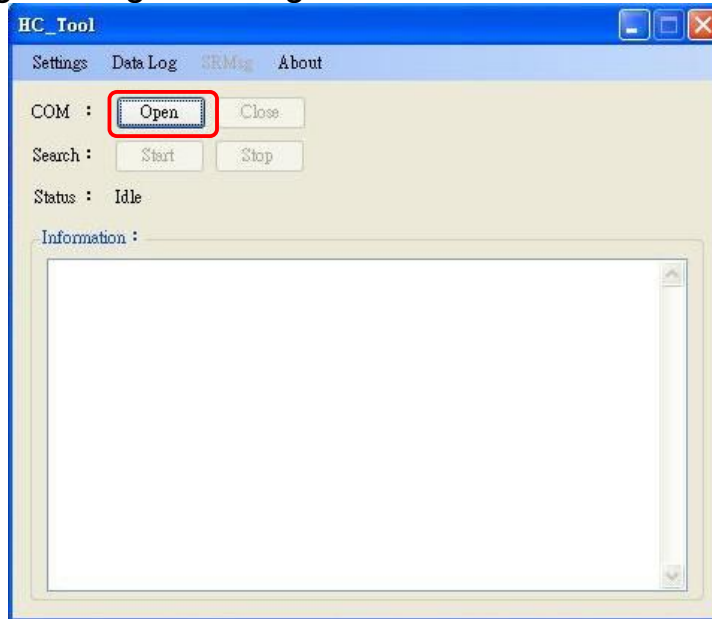


Figure 3-4: Click the “Open” button

Step5: The I-7567 connected HART device with HART bus, then click the “Start” button to search the HART devices. The users can view “Information” to understand the status of HART device.

