

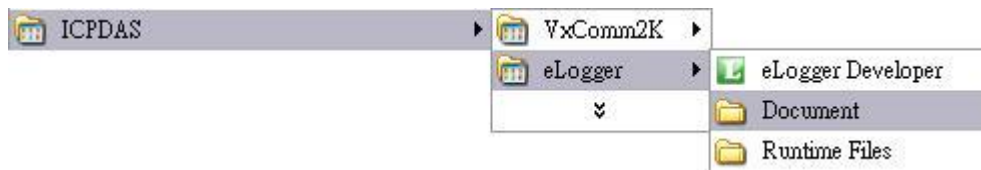
eLogger Quick Start V1.2.0 2010.06.04

Introduction

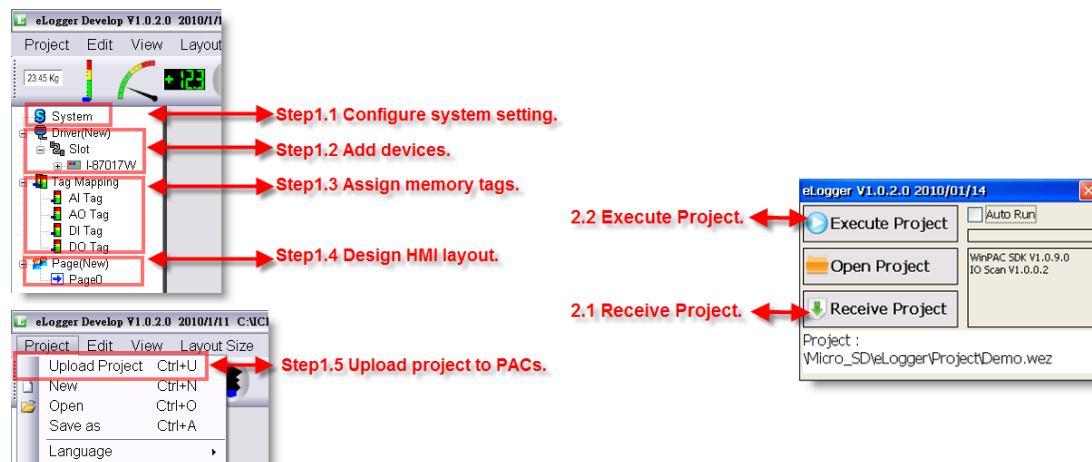
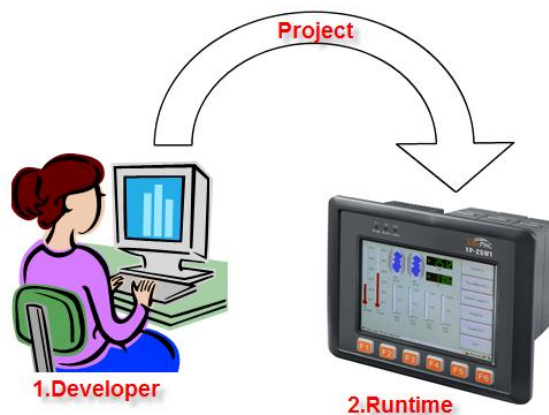
Please install .NET Framework 3.5 before eLogger installation.

[Microsoft.com downloads](#)

Execute eloggersetup_v120_20100604.exe to install eLogger Developer and eLogger Runtime. After installation, there will be “eLogger Developer”, “Runtime Files” shortcut in “Programs/ICPDAS/eLogger”.

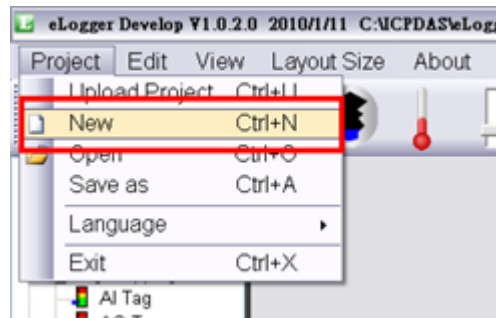


eLogger Developer is a project design program on PC side. You can add devices, assign memory tags, and design the HMI. When you finish your project, you can copy the files in "eLogger Runtime" to PACs, and upload the project to run.

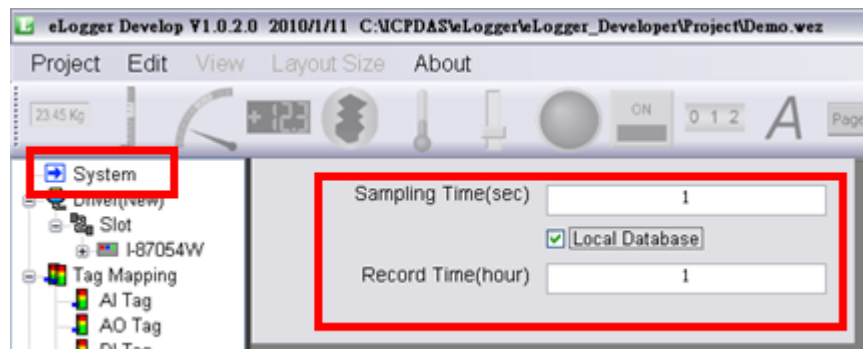


Design a project:

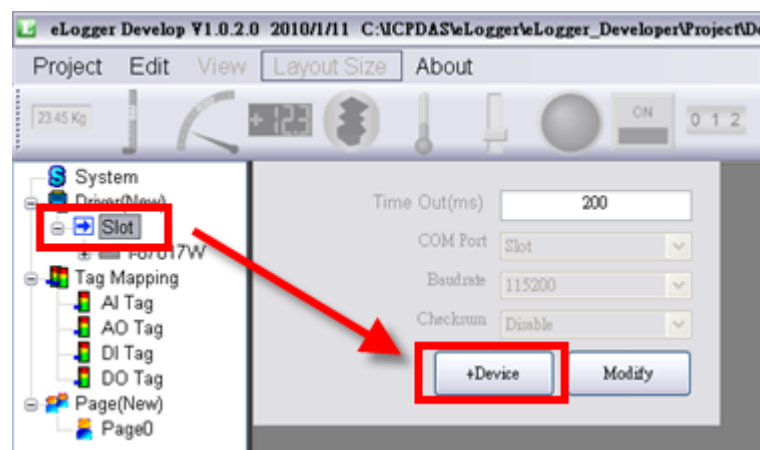
Step 1: Open a new project



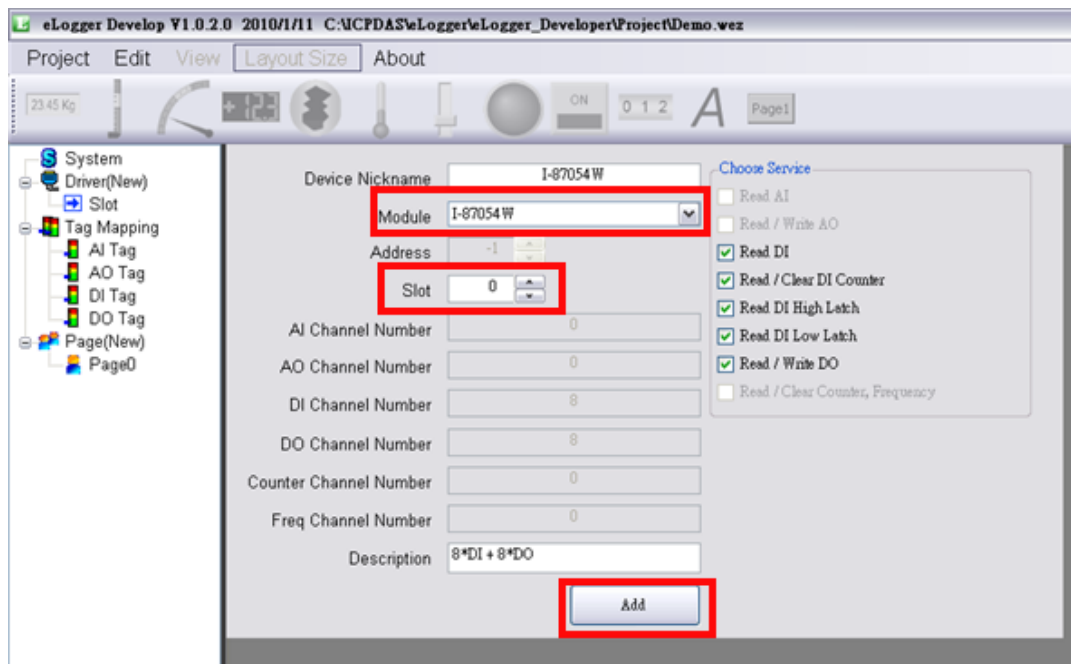
Step 2: Set sampling time and enable database recorder



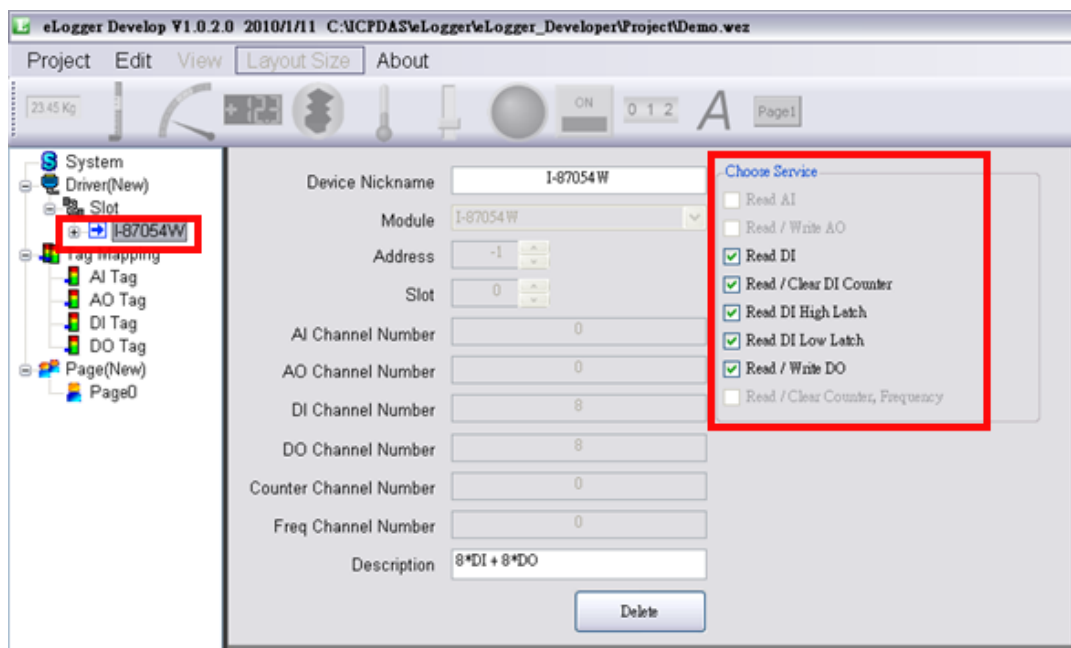
Step 3: Add Device (on slot)



Step 4: Select a module, set slot number and then click “Add”



Step 5: Check the service of the module



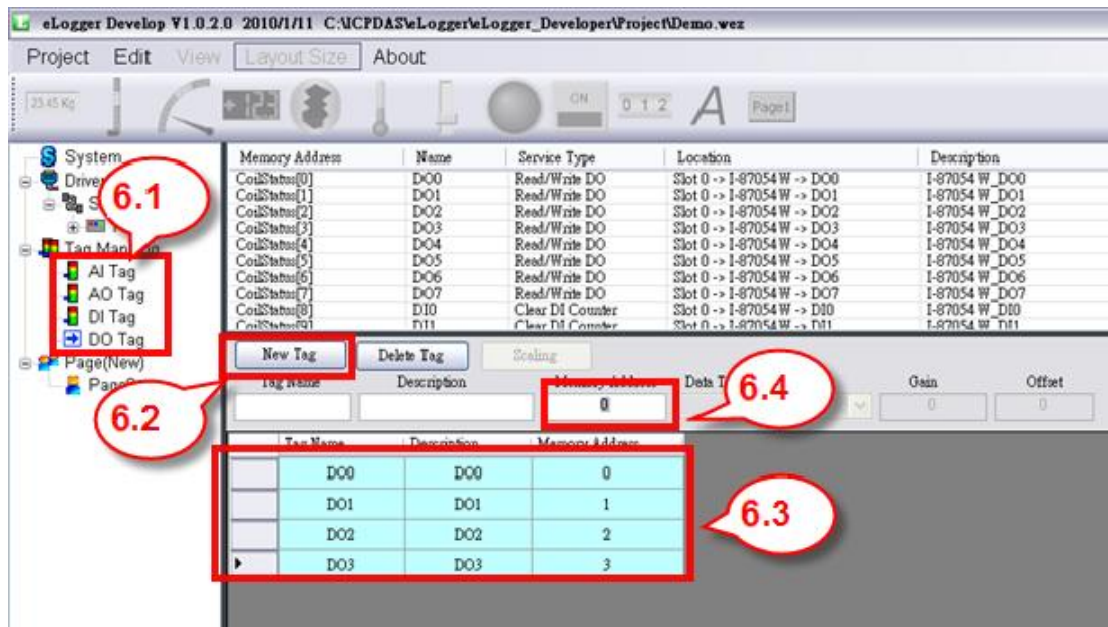
Step 6: Assign memory tags

6.1 Select tag list

6.2 Add new tags

6.3 Select tag rows

6.4 Type memory address and press enter



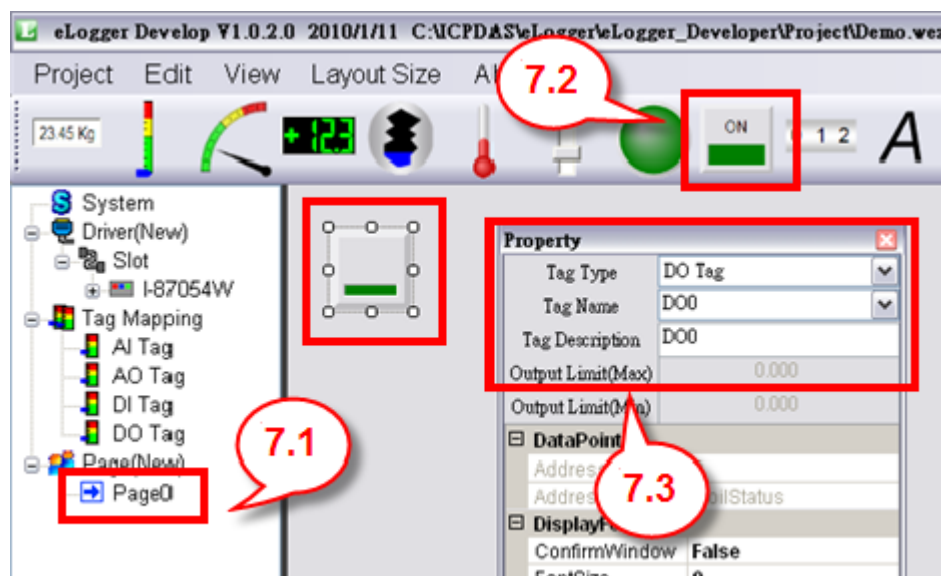
Step 7: Add HMI Component, and set the tag

7.1 Select page

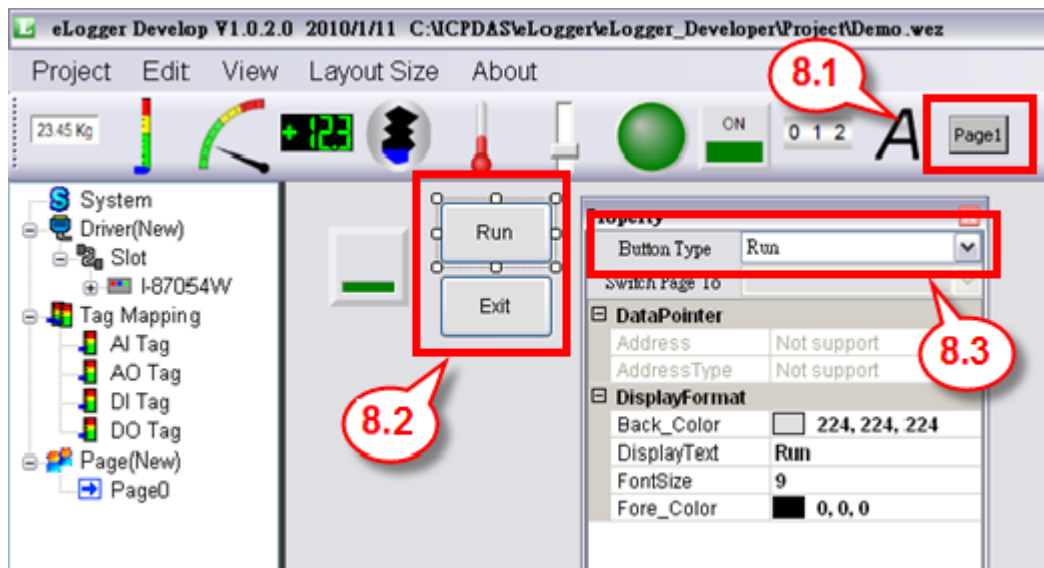
7.2 Add layout components

7.3 Select layout component, and edit the properties

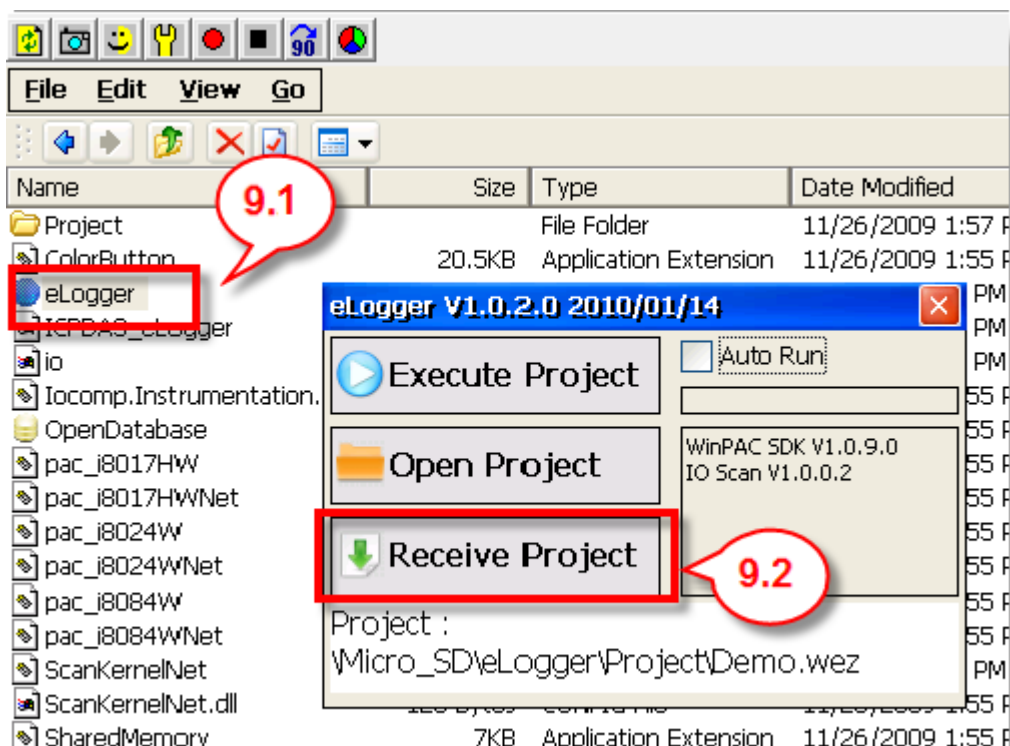
(Select the tag type, and select a tag name.)



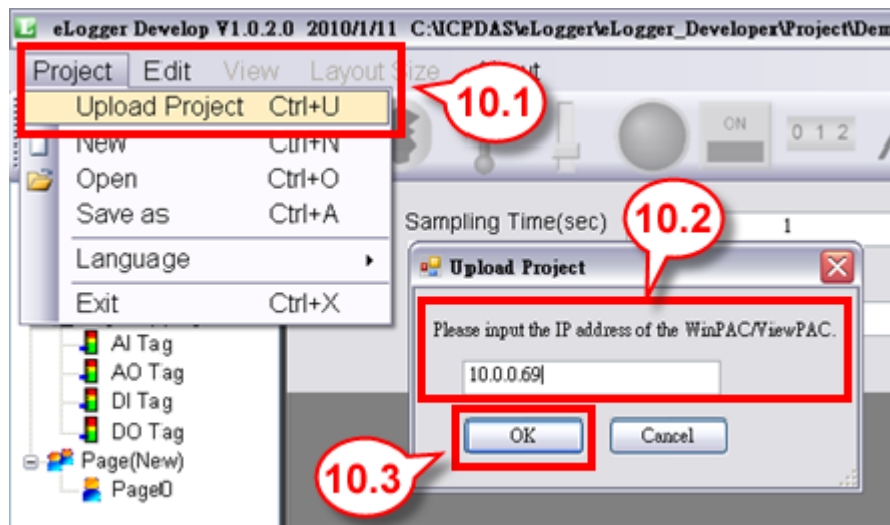
Step 8: Add 2 buttons, and set the button type as “Run” and “Exit”



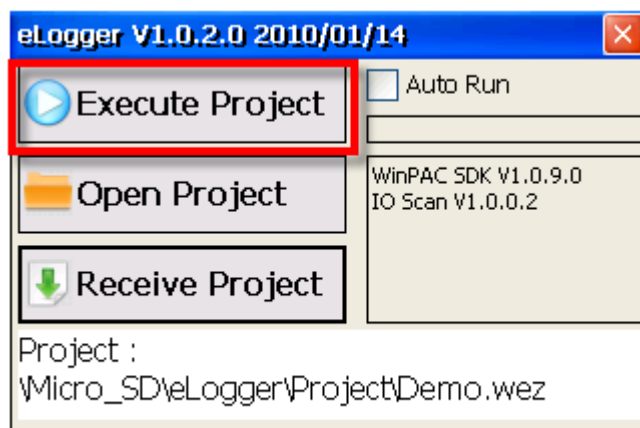
**Step 9: Copy “eLogger Runtime” files to WinPAC and execute eLogger.exe.
Click ”Receive Project”**



Step 10: Click “Upload Project” on Developer, and input the IP address of WinPAC



Step 11: Click “Execute Project” to run the received project



Step 12: Click “Run” button

