



High quality data acquisition and embedded control products.

Using ET-7000 & WISE-7000 with Indusoft

by Eric Ratliff, ICP DAS USA Inc. 2010.8.11

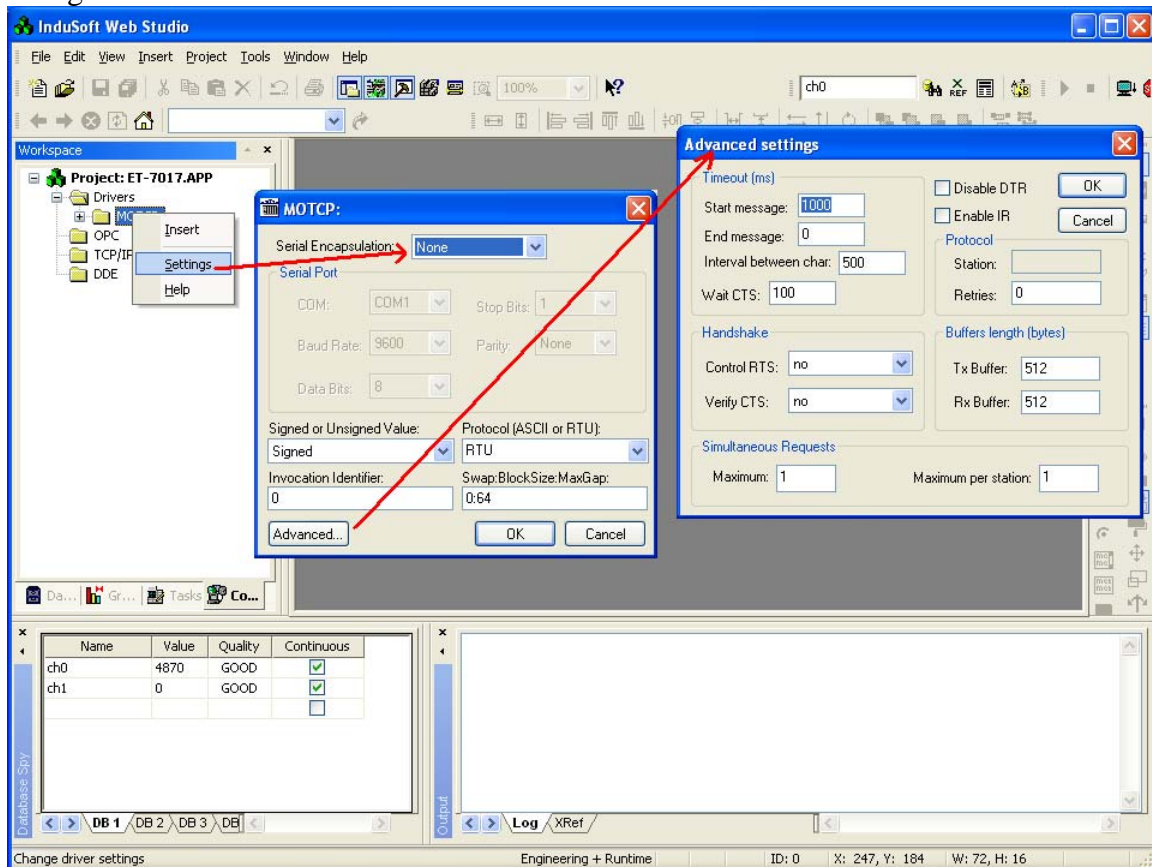
The ET-7000 series is known for its web interface for user interaction. They also have a Modbus TCP interface for machine interaction. Here I show the crucial steps for setting up this in Indusoft.

The definitive reference for the MOTCP driver of Indusoft, Motcp.pdf, is found by right clicking on the driver in Indusoft. Similarly the address mapping of the ET-7017 (for example) is found at <http://www.icpdas-usa.com/products.php?PID=3330> by clicking on which leads to http://www.icpdas-usa.com/documentation/manuals/et7k_user_manual.pdf. See appendix C.

The example project “ET-7017 Indusoft.zip” is used in the following screen shots.

Driver Settings

Have settings of the driver show no serial encapsulation. Advanced settings are not changed from default.





High quality data acquisition and embedded control products.

Note that we are leaving the default as signed integers.

Setting up the Main Driver Sheet

Note that using additional Standard Driver Sheets is optional for finer control of when data is read.

The screenshot shows the 'MOTCP - MAIN DRIVER SHEET' configuration in InduSoft Web Studio. The workspace tree on the left shows the project structure: Project: ET-7017.APP, Drivers, MOTCP, MAIN DRIVER SHEET, OPC, TCP/IP, and DDE. A red arrow points from 'MAIN DRIVER SHEET' in the tree to the configuration table.

Tag Name	Station	I/O Address	Action	Scan
1 ch0	192.168.1.20:502:1	3X:1	Read	Always
2 ch1	192.168.1.20:502:1	3X:2	Read	Always
*			Read+Write	Always
*			Read+Write	Always
*			Read+Write	Always
*			Read+Write	Always

Below the table, the 'Database Spy' window shows the following data:

Name	Value	Quality	Continuous
ch0	4870	GOOD	<input checked="" type="checkbox"/>
ch1	0	GOOD	<input checked="" type="checkbox"/>

Note that WISE series modules, unlike the ET-7000 series modules, use floats in their Modbus interface. Also, the AI channel addresses begin at 21. FP3:21 should be the first appropriate "I/O Address" to use. I have not tested this. The next channel's address should be FP3:23, because each float takes two words.



High quality data acquisition and embedded control products.

Creating a sheet for user to see value

right click/Properties

Name	Value	Quality	Continuous
ch0	0	GOOD	<input checked="" type="checkbox"/>
ch1	0	GOOD	<input checked="" type="checkbox"/>



High quality data acquisition and embedded control products.

Test run

Entire PC screen becomes white with this one number showing. Alt-Tab to see Indusoft Web Studio again.

Name	Value	Quality	Continuous
ch0	4877	GOOD	<input checked="" type="checkbox"/>
ch1	0	GOOD	<input type="checkbox"/>

..... Verify Application was started

..... Verify Application was completed successfully.

-4-

Using ET-7000 & WISE-7000 with Indusoft Version 1.0

ICP DAS USA, Inc. www.icpdas-usa.com, 1-310-517-9888
1508 West Pacific Coast Highway, Harbor City, CA 90710