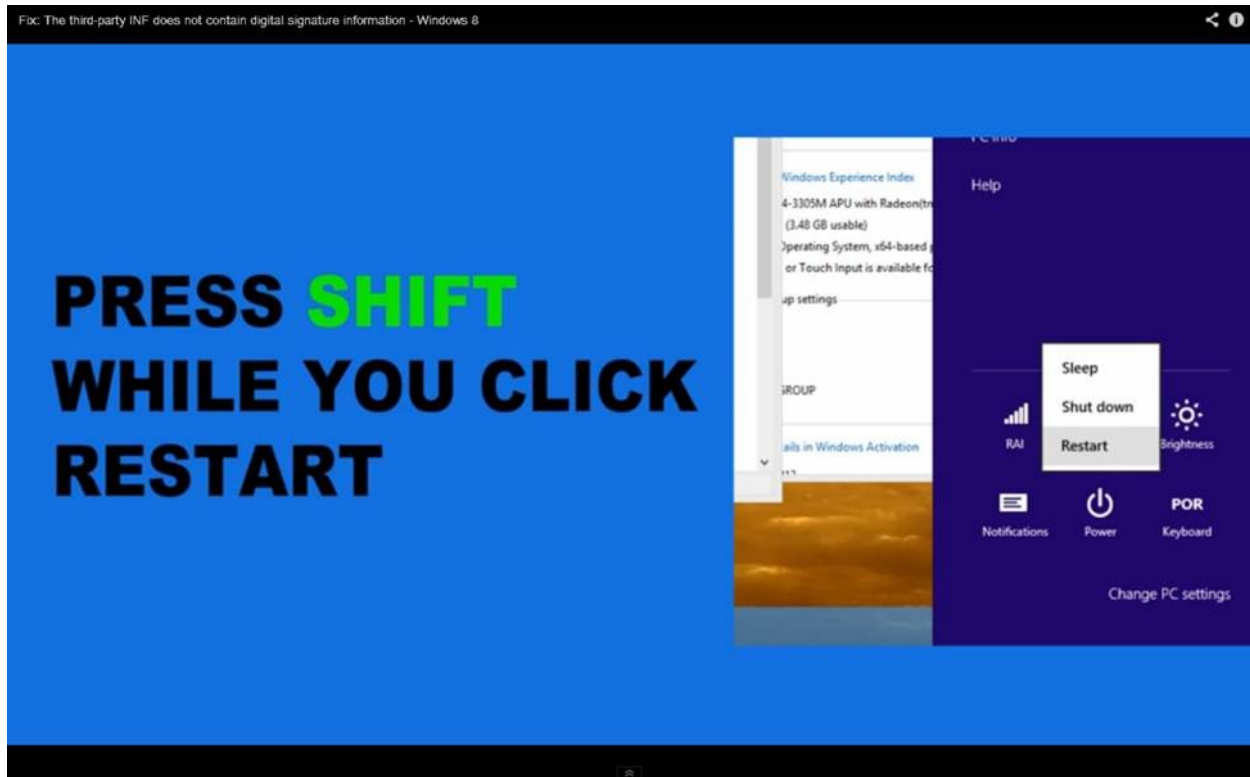
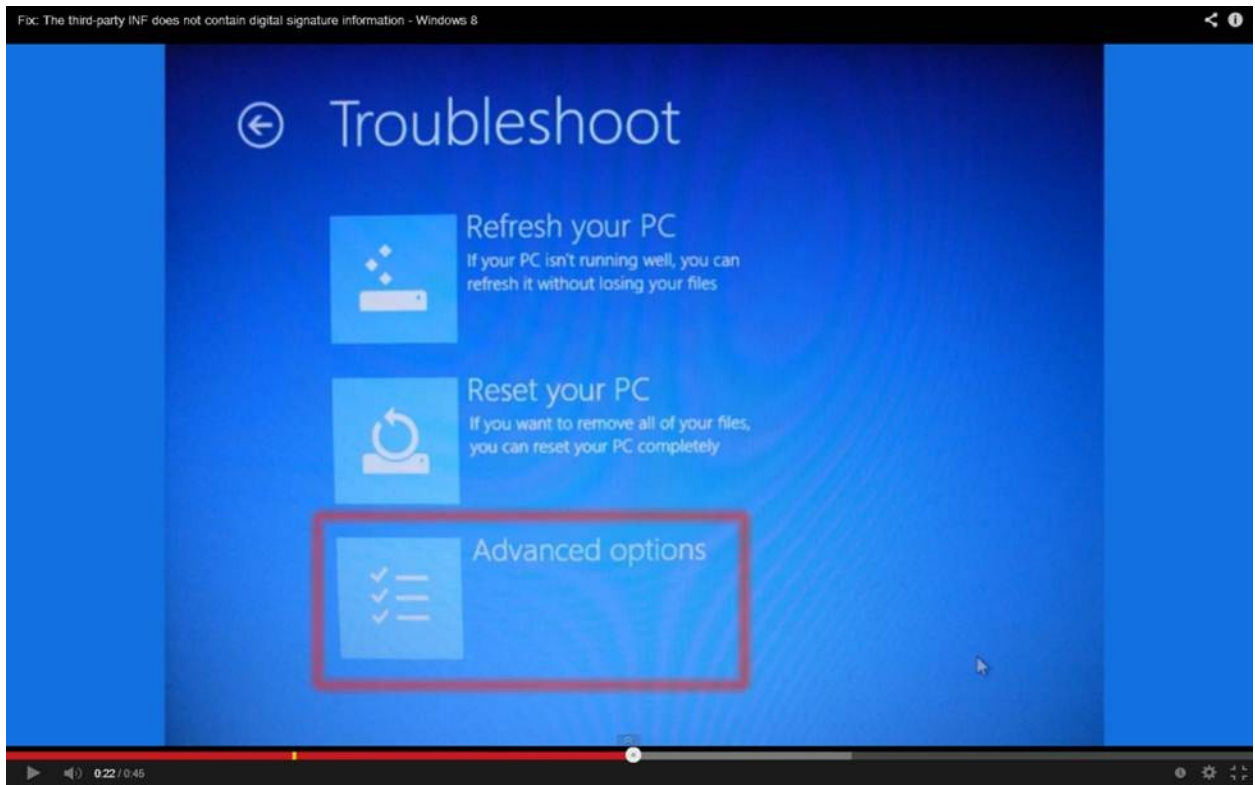




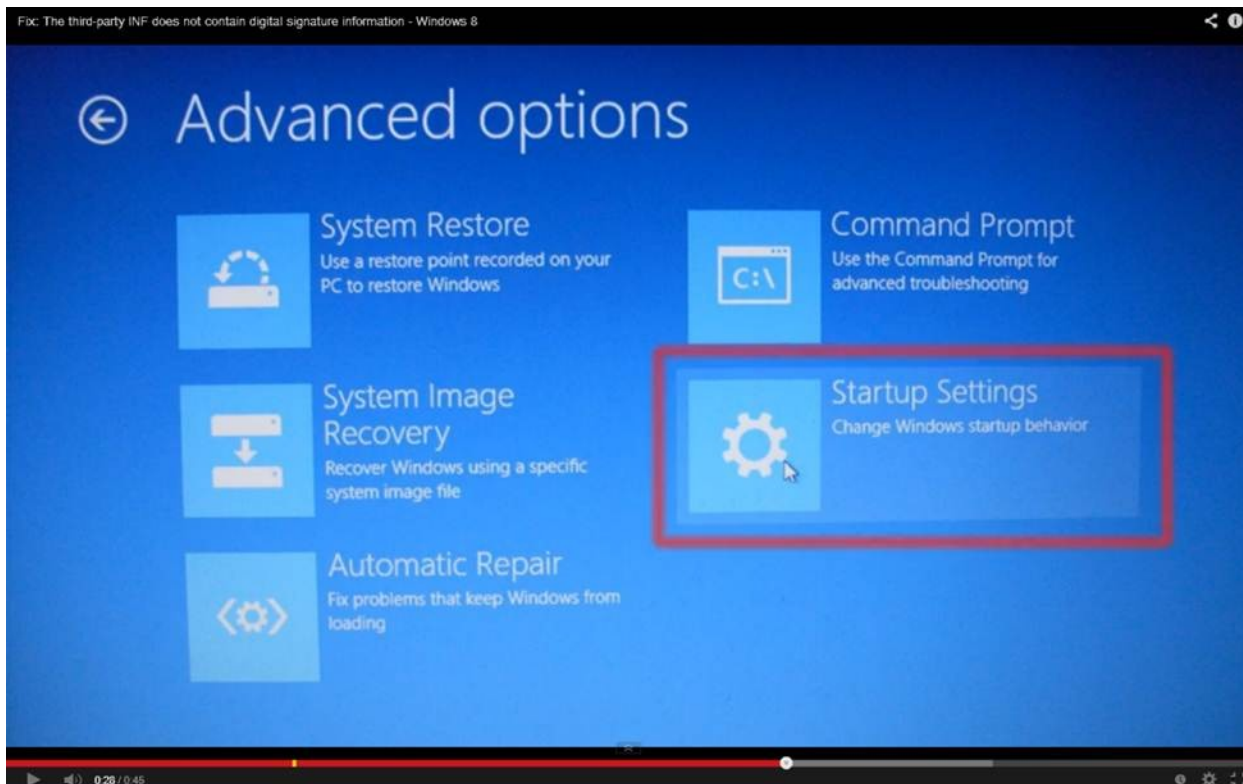
1. [Please install HMI Works Standard Version at least 2.05.08](#)
2. [Then, install update 12](#)
3. Then, you will need to install the USB driver. When you install the USB driver the screen below will appear on Windows 8 systems. Press the shift key while you click the restart button.



4. Choose the troubleshoot option.



5. Select Startup Settings



6. Press 7 on your Keyboard to complete installing the driver.

