

---

# Quick Start Guide for PDS-700 Series

Written by Anna Huang  
Last Update by Tammy Chuang  
Version 1.1, Apr. 2008

## 1 ..... What's on your package?

1. One PDS-700 series device
2. One companion CD
3. One Quick Start Guide (this document)
4. One RS-232 download cable (CA-0910)

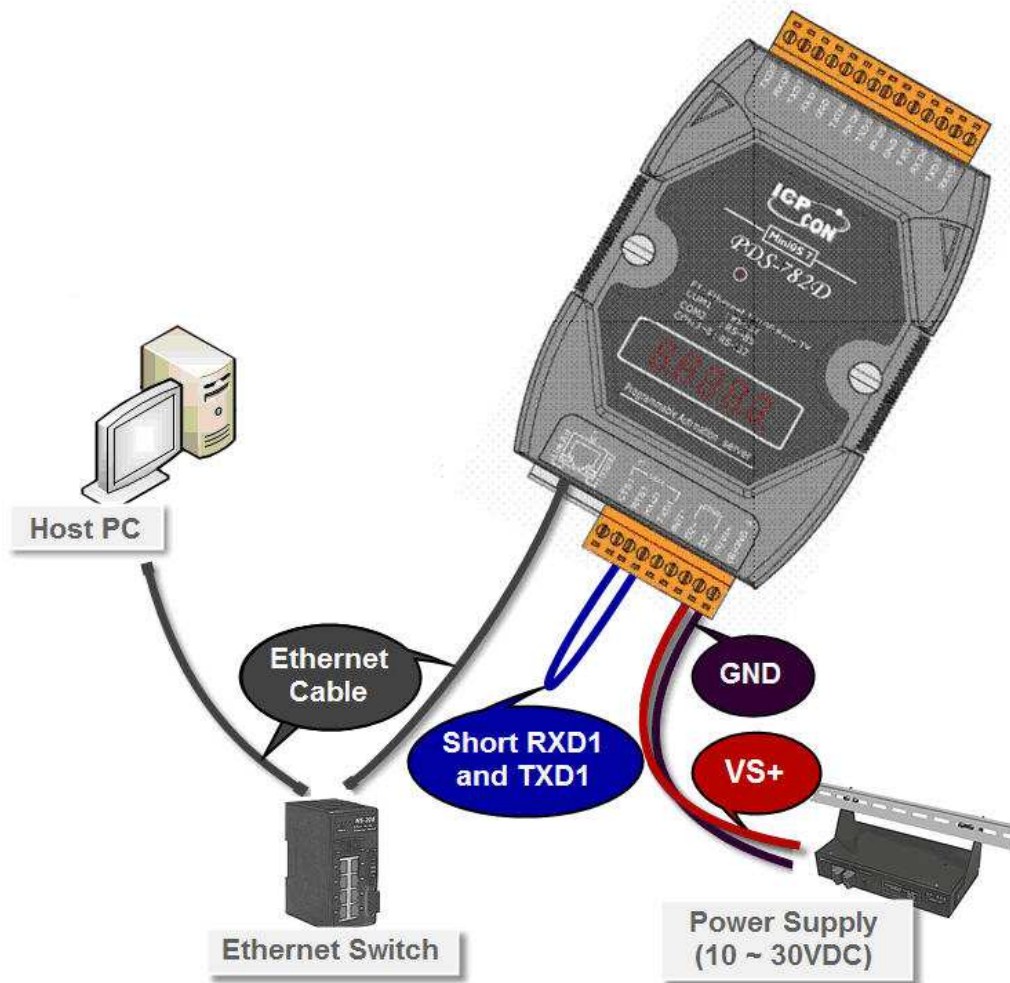
## 2 ..... Preparing for start-up your PDS-700

1. Power Supply : +10V ~ +30V/DC (EX : DP-665)  
[http://www.icpdas.com/products/Accessories/power\\_supply/powerlist.htm](http://www.icpdas.com/products/Accessories/power_supply/powerlist.htm)
2. Hub (EX : NS-205)  
[http://www.icpdas.com/products/Switch/industrial/industrial\\_list.htm](http://www.icpdas.com/products/Switch/industrial/industrial_list.htm)
3. Make sure your PC has workable network settings.
4. Disable or well configure your Windows firewall and Anti-Virus firewall first, else the "Search Servers" on page 3 may not work.  
(Please contact your System Administrator)

# 3

## Connecting the Power and Host PC

1. Connect your PDS-700 and PC to the same Ethernet Switch Hub or in the same sub-network.
2. Wire "RXD1" and "TXD1" of the PDS-700 (for test).



# 4

## Installing VxComm Utility on your PC

1. The software is located at :

CD:\Napdos\7188e\tcp\vxcomm\driver(pc)\

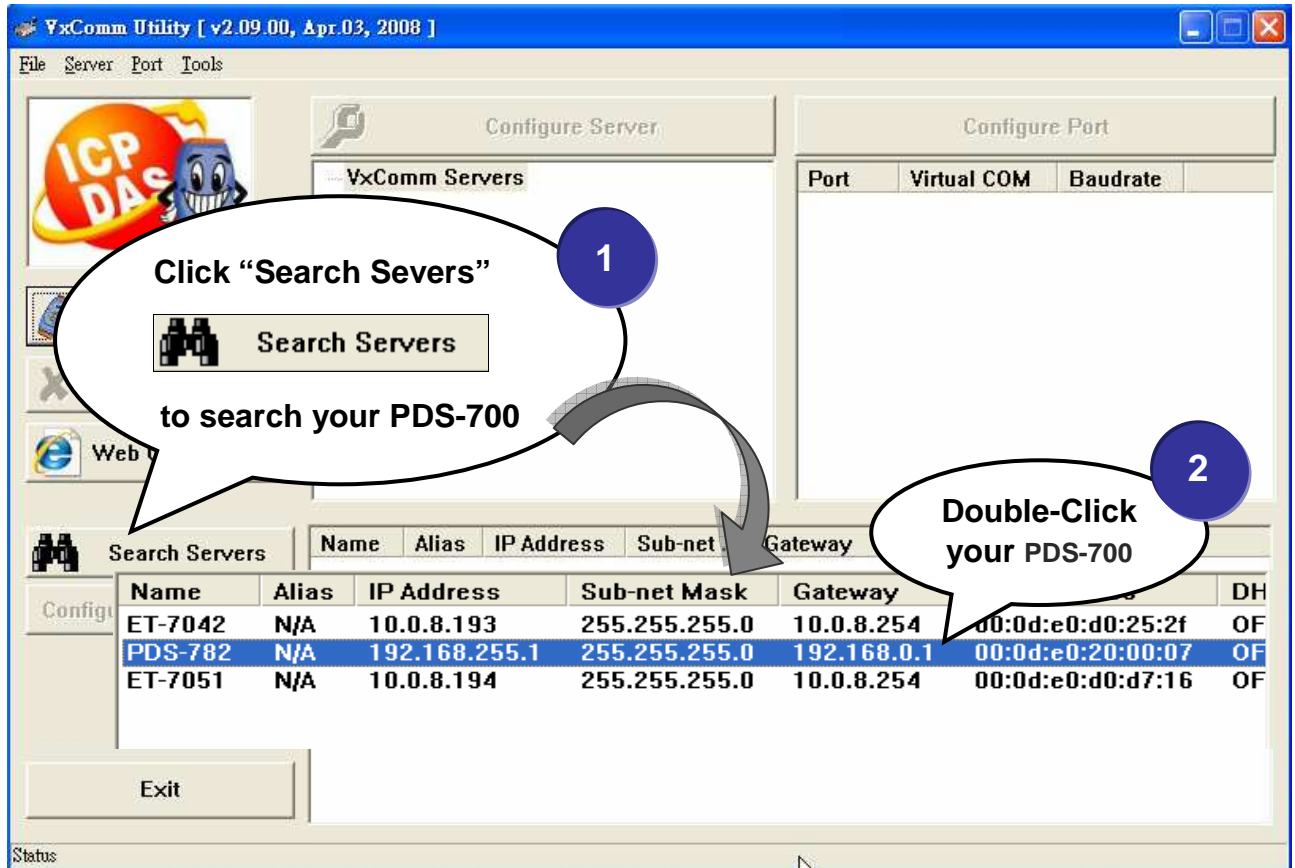
[http://ftp.icpdas.com/pub/cd/8000cd/napdos/7188e/tcp/vxcomm/driver\(pc\)/](http://ftp.icpdas.com/pub/cd/8000cd/napdos/7188e/tcp/vxcomm/driver(pc)/)

2. Install VxComm Utility.

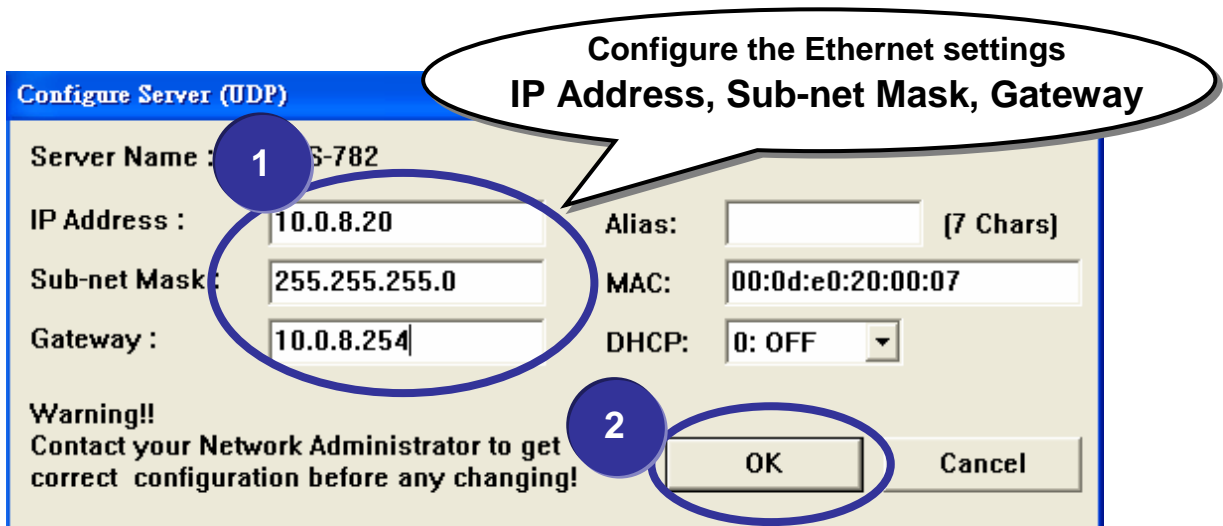
# 5 ..... Configuring Ethernet settings

Step 1 : Run VxComm Utility and then search your PDS-700.

Step 2 : Double-Click your PDS-700 to configure the Ethernet settings.

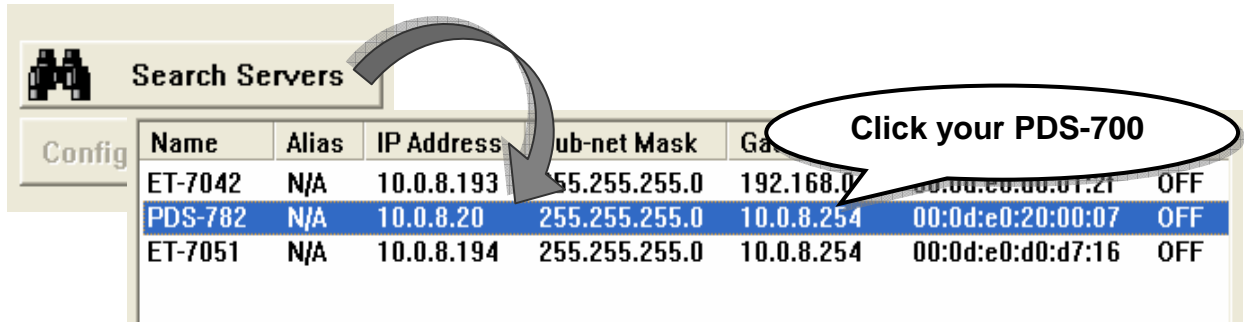



Step 3 : Contact your Network Administrator to get correct network configuration. Modify the network settings and then click "OK". The PDS-700 will restart it-self immediately.

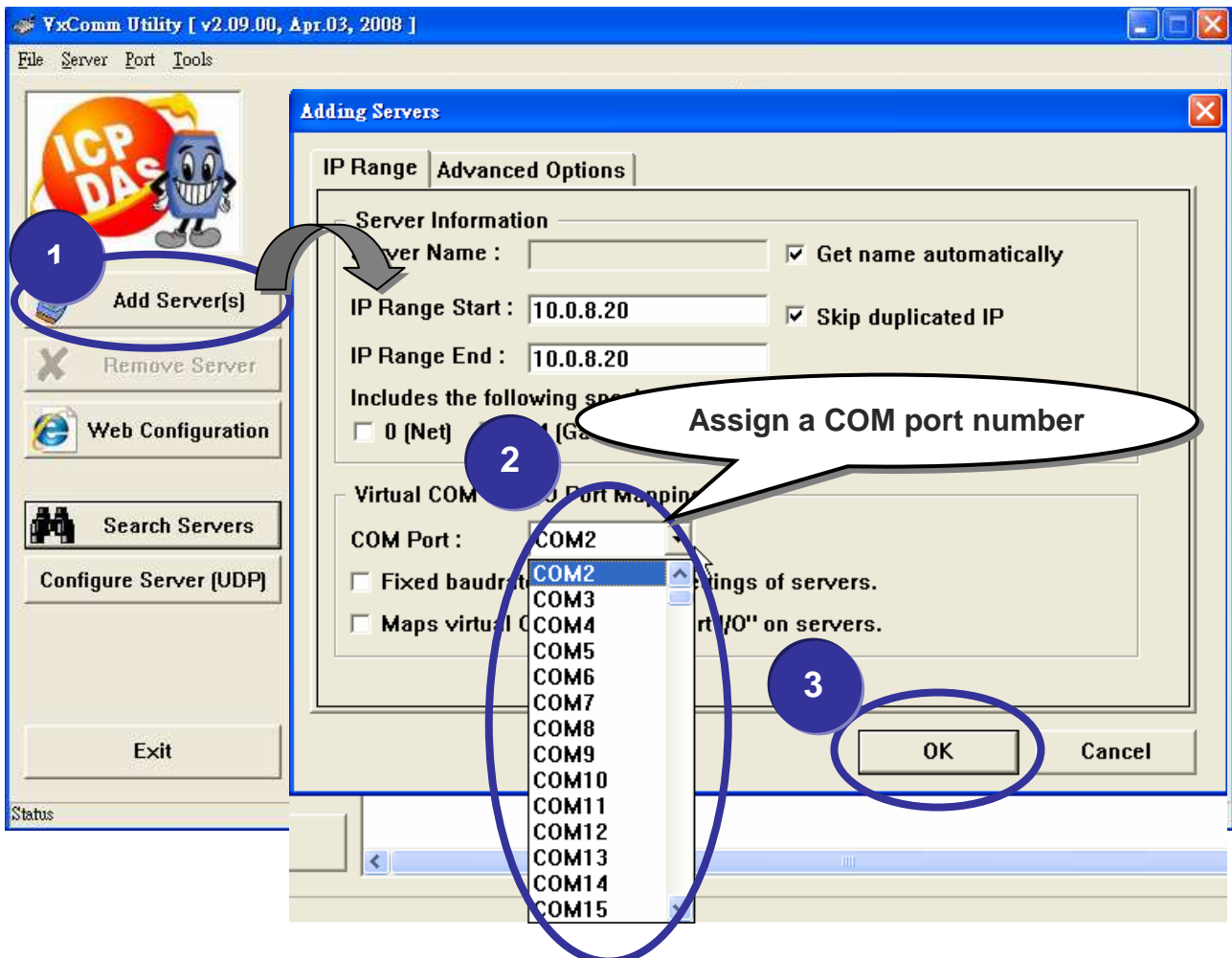


# 6 Configuring virtual COM ports

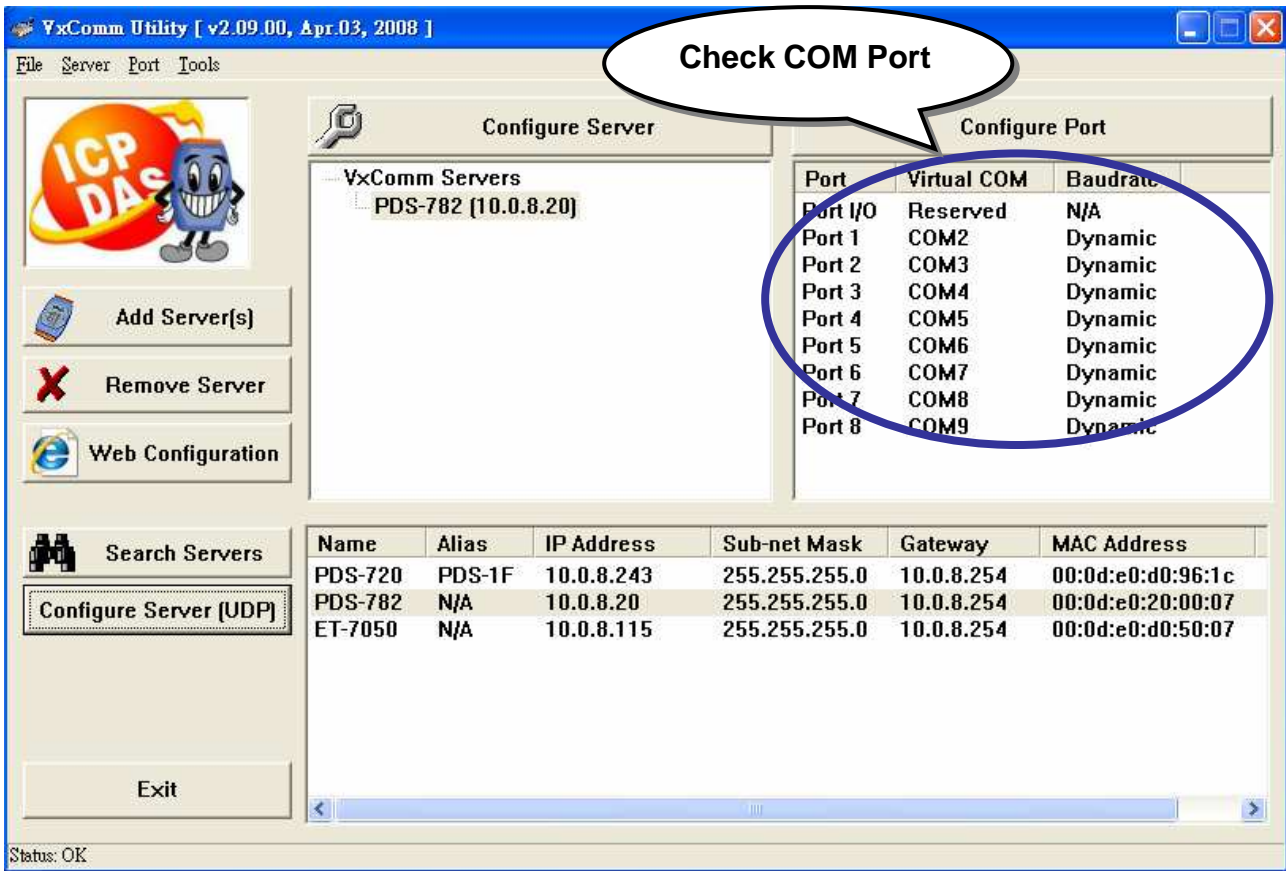
Step 1 : Again search out your PDS-700 to make sure the new IP/Mask/Gateway are set in, then click your PDS-700 to select it.



Step 2 : Click  Add Server(s), assign a COM port number and then click "OK".



**Step 3 : Check the COM port numbers virtualized on PC.**

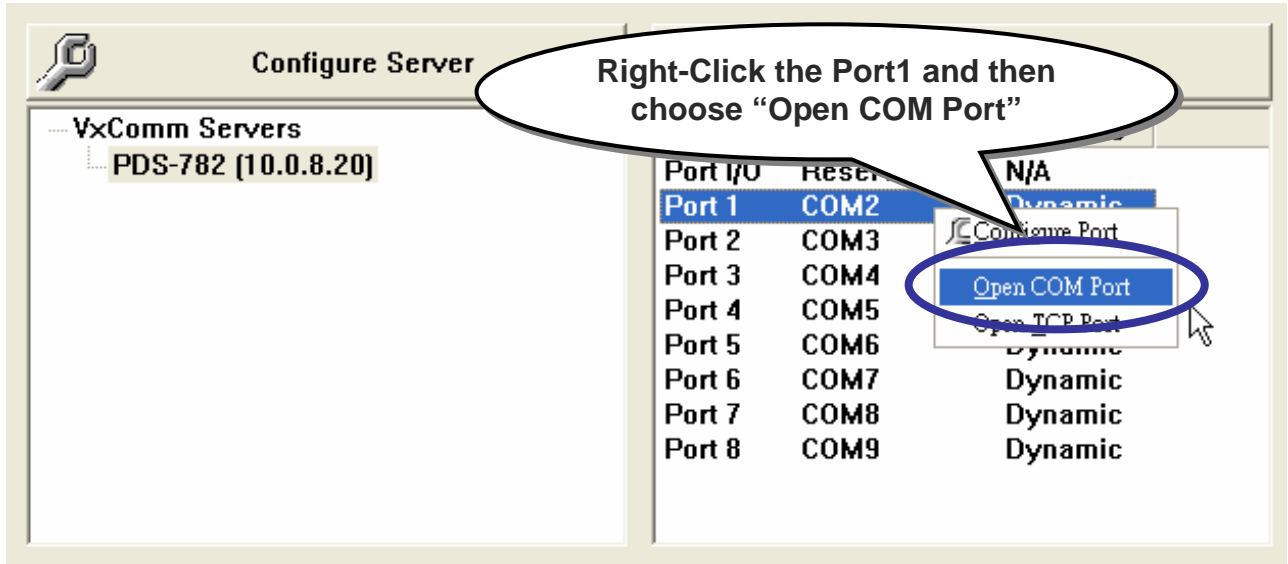


**Step 4 : Click “Tools -> Restart Driver” and then click “Restart Driver” to start the driver. (Close all opened virtual COM ports first.)**

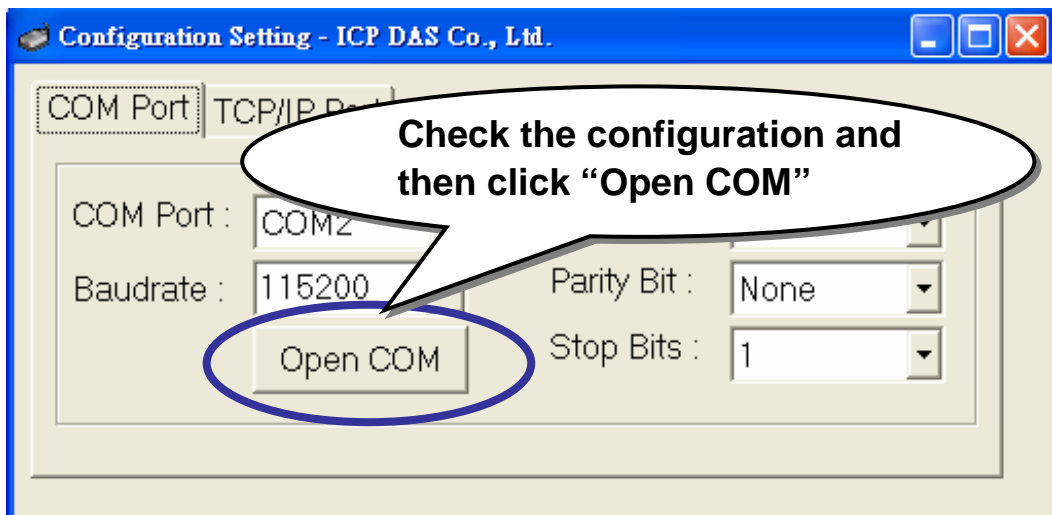


# 7 Testing your PDS-700

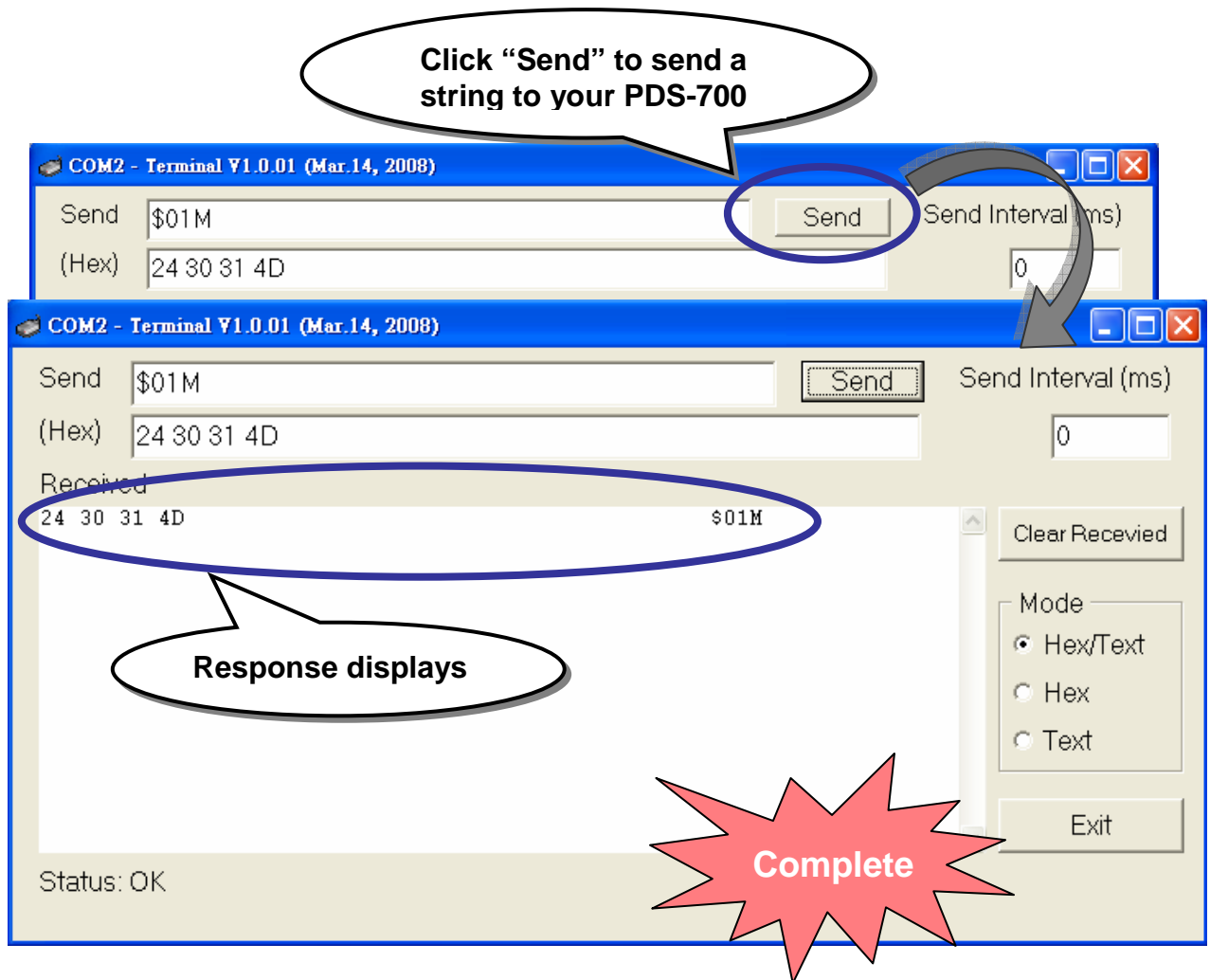
Step 1 : Right-Click the Port1 and then choose “Open COM Port”.



Step 2 : Check the COM Port’s configuration and then click “Open COM”.



**Step 3 : Send a string and get a response = string sent.**



## Additional Information

### **PDS-700 Document :**

CD:\Napedos\pds-700\document\

<http://ftp.icpdas.com/pub/cd/8000cd/napdos/pds-700/document/>

### **PDS-700 firmware :**

CD:\Napedos\pds-700\tcp\vxcomm\server(7186e)\

[http://ftp.icpdas.com/pub/cd/8000cd/napdos/pds-700/tcp/vxcomm/server\(7186e\)/](http://ftp.icpdas.com/pub/cd/8000cd/napdos/pds-700/tcp/vxcomm/server(7186e)/)

### **The ICP DAS Web Site**

<http://www.icpdas.com>

- Technical support
- Supplies and ordering information
- Information to enhance the product
- FAQ & Application story



### **Contact Us**

[Service@icpdas.com](mailto:Service@icpdas.com)

Copyright © 2007 by ICP DAS Co., Ltd. All rights are reserved.