

Quick Start

for ECAT-2045/2057/2057-NPN/2057-8P8N

English / July,2016/ Ver 1.0

1 Shipping Package

This shipping package contains the following items

1 x ECAT-2000 module

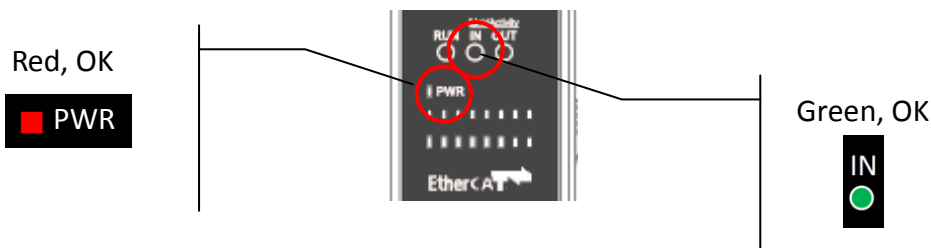
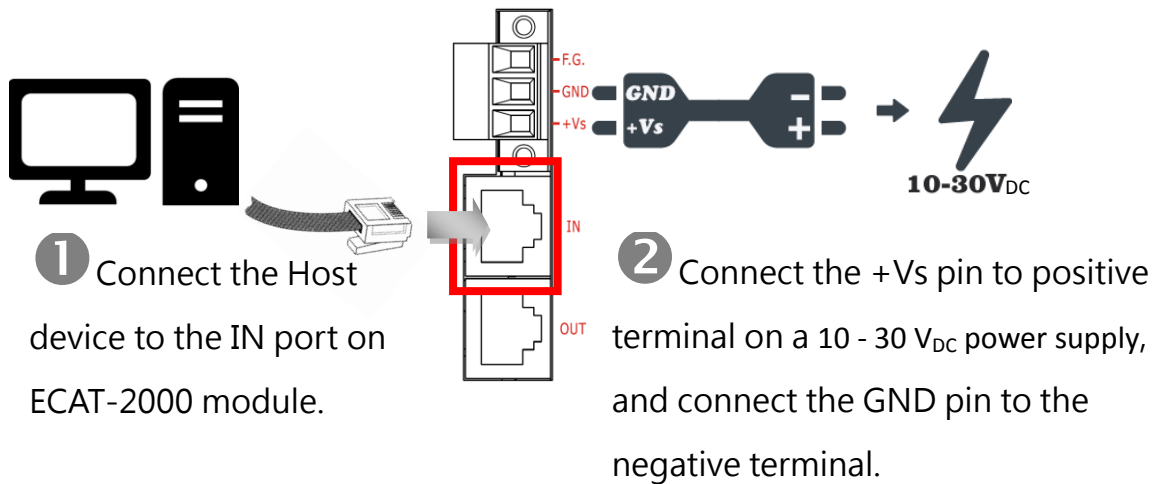


1 x Quick Start Guide (This Document)



2 Connecting the Power and Host device

Switch on module and connect it to an EtherCAT network



3 Search Modules



ESI file

The latest ESI file (ICPDAS ECAT-2000.xml) can be downloaded from ICP DAS website at

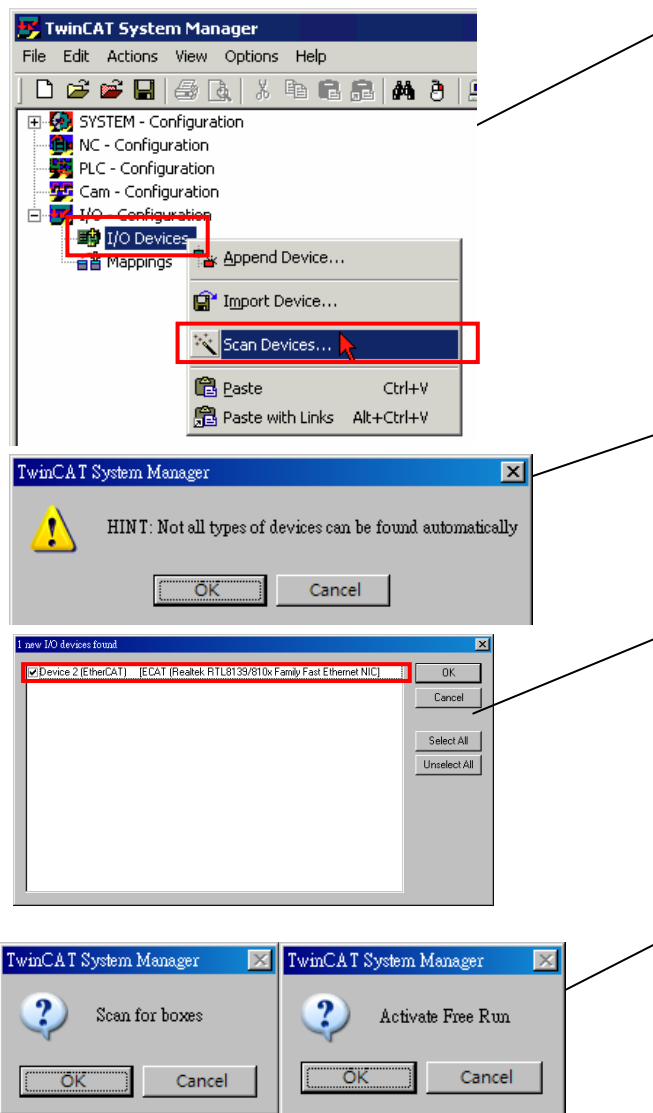
 http://ftp.icpdas.com/pub/cd/fieldbus_cd/ethercat/slave/ecat-2000/software/

Install the ESI file

Copy the “ICPDAS ECAT-2000.xml” file to the Master Tools installation folder, as indicated in the table below.

Software	Default Path
Beckhoff EtherCAT Configuration	C:\EtherCAT Configurator\EtherCAT
Beckhoff TwinCAT 3.X	C:\TwinCAT\3.x\Config\Io\EtherCAT
Beckhoff TwinCAT 2.X	C:\TwinCAT\Io\EtherCAT

Run the EtherCAT Master software (Beckhoff TwinCAT 2.X)

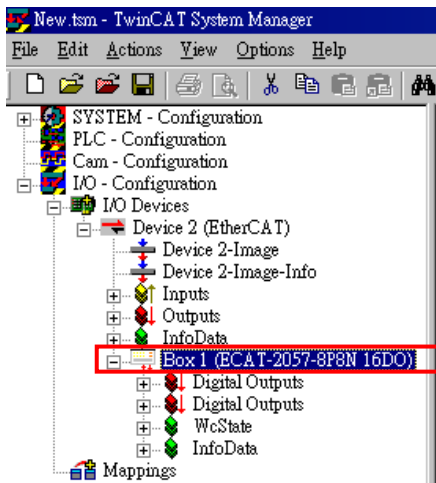


Switch on power
Execute the TwinCAT System Manager(Config mode)
I/O Devices-> Right click-> Scan Devices...

Click OK

Choose the correct network device which is connected to ECAT-2000

Click Yes to start scanning and click Yes to activate the free run mode for TwinCAT system manager

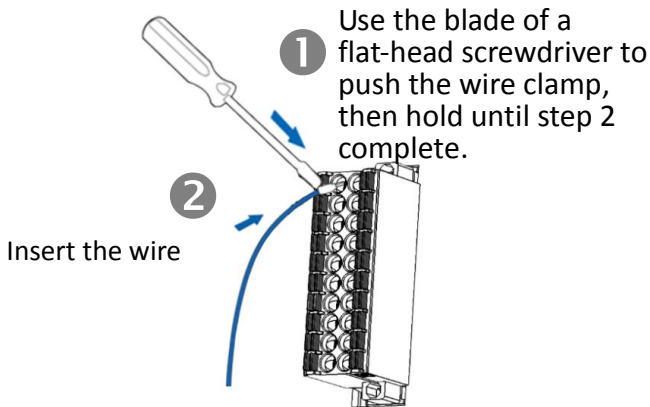


ECAT-2000 is now shown in the TwinCAT system Manager

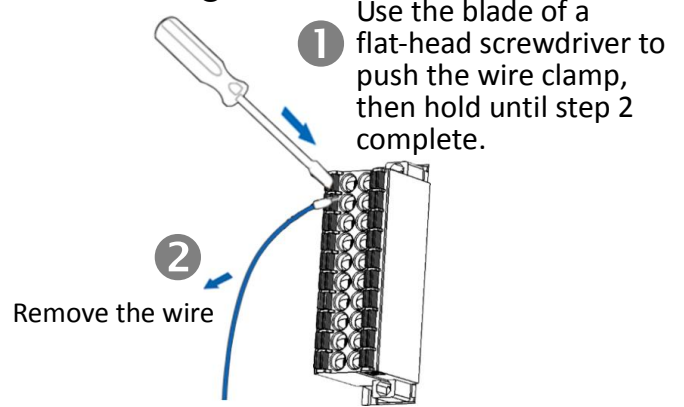
4 Wiring to the connector

Wiring Tip

Connection the wire



Removing the wire



Wire Diagrams

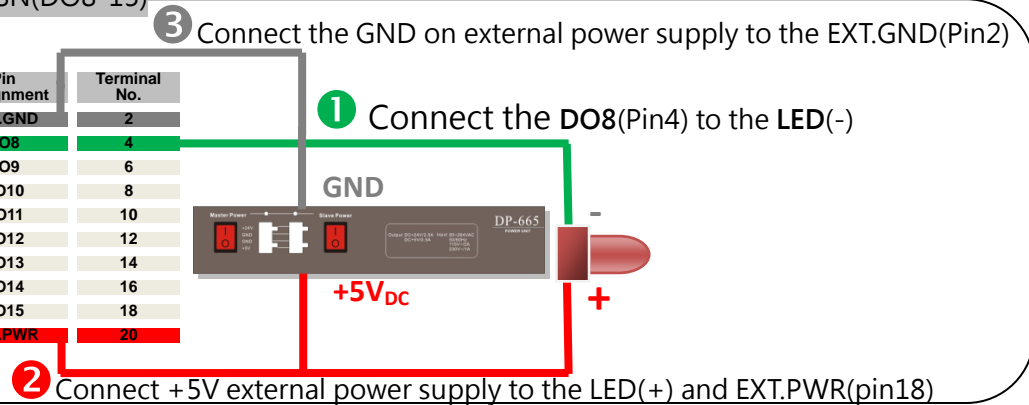
Module Name	ECAT-2045 ECAT-2057-NPN ECAT-2057-8P8N (DO8-15)		ECAT-2057 ECAT-2057-8P8N(DO0-7)	
	Sink		Source	
Output Type	ON State Readback as 1	OFF State Readback as 0	ON State Readback as 1	OFF State Readback as 0
Drive Relay				
Resistance				

Wiring the DO

ECAT-2045/2057-NPN/2057-8P8N(DO8-15)

Terminal No.	Pin Assignment
1	EXT.GND
3	DO0
5	DO1
7	DO2
9	DO3
11	DO4
13	DO5
15	DO6
17	DO7
19	EXT.PWR

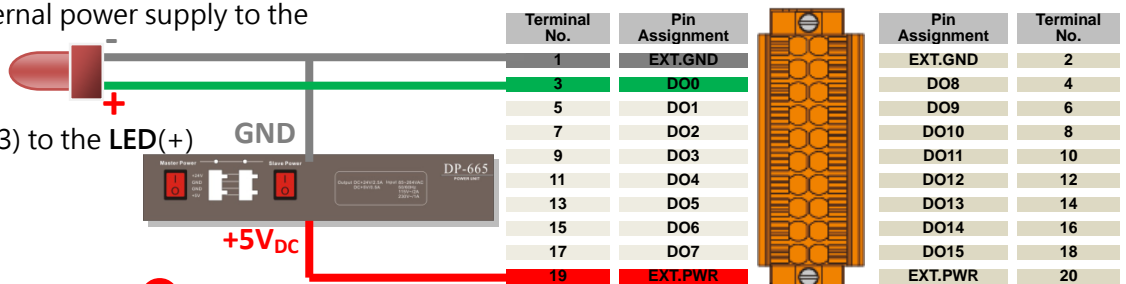
Pin Assignment	Terminal No.
EXT.GND	2
DO8	4
DO9	6
DO10	8
DO11	10
DO12	12
DO13	14
DO14	16
DO15	18
EXT.PWR	20



ECAT-2057/2057-8P8N(DO0-7)

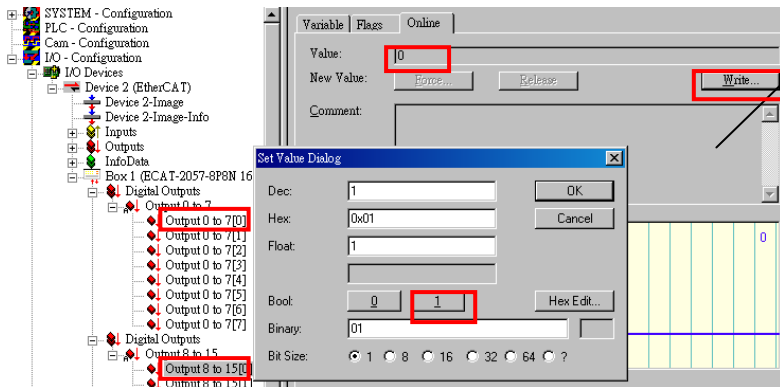
3 Connect the GND on external power supply to the EXT.GND (Pin 1) and LED (-)

1 Connect the DO0 (Pin 3) to the LED (+)



2 Connect +5V external power supply to EXT.PWR (pin 19)

Verifying the DO functionality



In the left-hand of the window, click on the Output 0 to 7 or Output 8 to 15, then click Output 0 to 7[0] or Output 0 to 15[0].

In the right-hand of the windows, click the online. Click Write.

Click 1 (Configure DO0 or DO8 to Logic1).



LED is lighting.



Related Information

Product Page:

http://www.icpdas.com/root/product/solutions/industrial_communication/fieldbus/ethernetcat/io_module/ecat-2045.html

http://www.icpdas.com/root/product/solutions/industrial_communication/fieldbus/ethernetcat/io_module/ecat-2057.html

Documentation:

ftp://ftp.icpdas.com/pub/cd/fieldbus_cd/ethernetcat/slave/ecat-2000/

ESI file:

http://ftp.icpdas.com/pub/cd/fieldbus_cd/ethernetcat/slave/ecat-2000/software/

DP-665(Optional) Product Page:

http://www.icpdas.com/products/Accessories/power_supply/dp-665.htm