



Quick Start for PET-7000

Ver.1.00, May 2009

What's on your package?

| Item | Quantity | Description |
|--------------|----------|-------------------------------------|
| PET-7000 | 1 | PET-7000 module |
| Manual | 1 | Quick Start Guide (this manual) |
| CD | 1 | Software and documents included. |
| Screw Driver | 1 | 2.4 mm screw driver |

Note:

If any of these items are missed or damaged, contact the local distributors. Save the shipping materials and cartons in case you want to ship the product in the future.

Related documents and firmware

Documents

User Manual: PET7K_User_Manual.pdf

Quick Start Manual: PET7K_Quick_Start.pdf

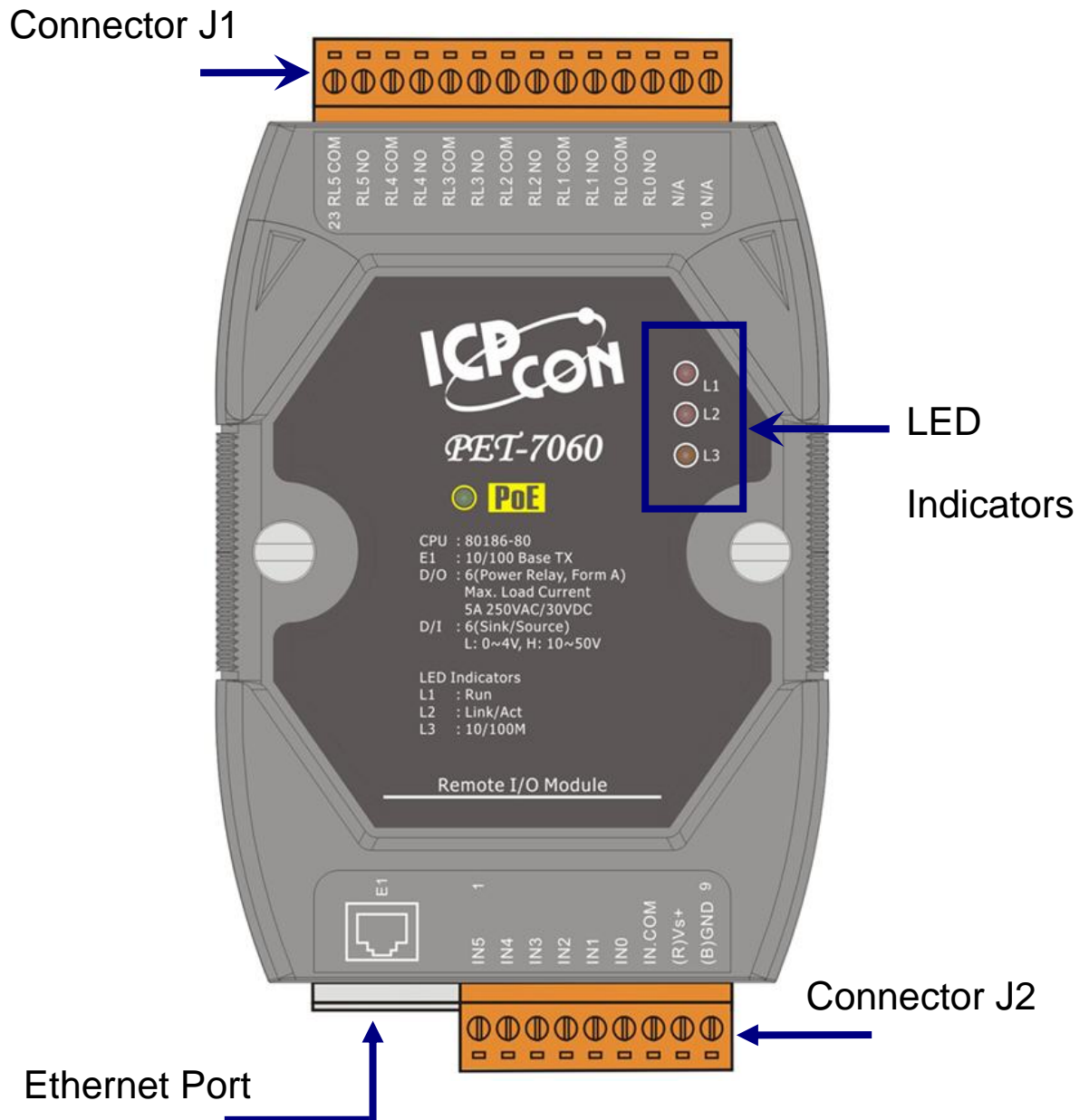
Location: CD: \NAPDOS\PET7000\Document\

Firmware:

Location: CD: \NAPDOS\PET7000\Firmware

Preparation

View of the Module



Preparing for start-up your PET-7000

PoE switch: NS-205PSE

<http://www.icpdas.com/products/Switch/industrial/ns-205pse.htm>

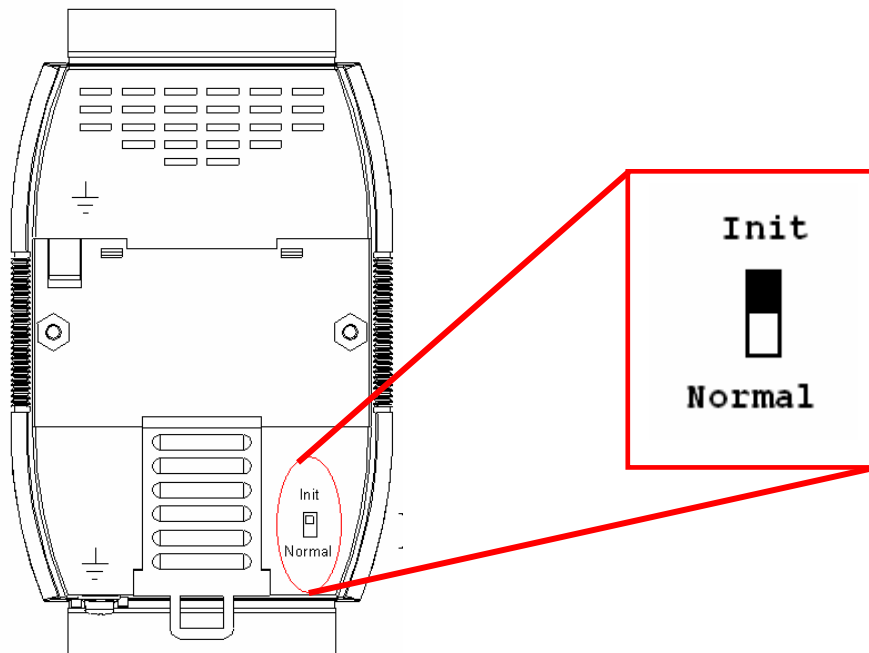
CD: \NAPDOS\PET7000\Document\ns_205pse

Power supply for NS-205PSE: MDR-60-48

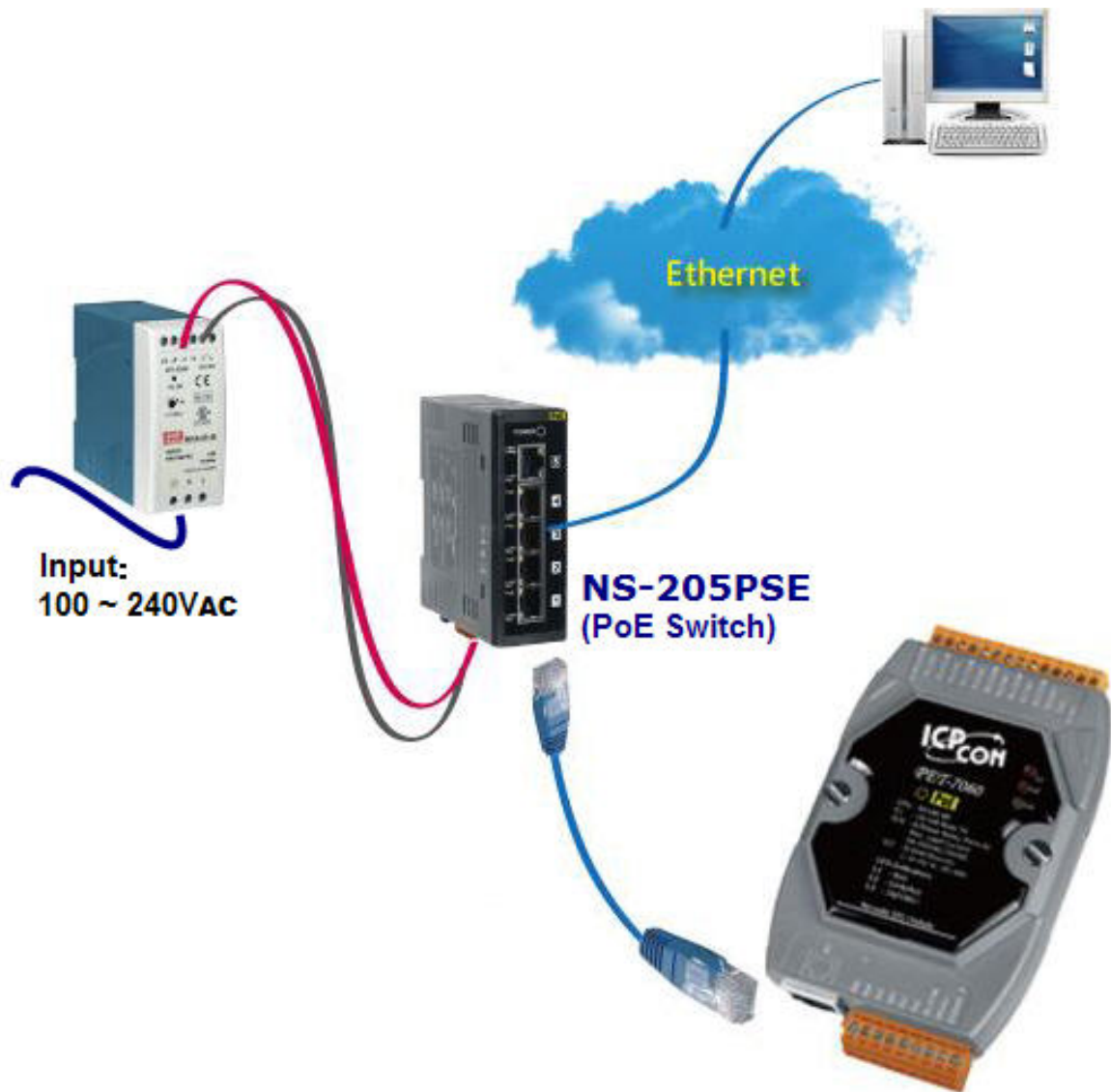
http://www.icpdas.com/products/Accessories/power_supply/mdr-60-48.htm

Connecting the module to Ethernet

- a. **Check** Init/Normal switch is on **Normal** position.



b. Connect the PET-7000 to PoE Ethernet switch.



C. Check that the L1 LED (“RUN”) periodically ON for 0.5 seconds and then OFF for 0.5 seconds.

Ethernet Configuration

The following network settings need be configured to meet your network demands, and then the PET-7000 can work correctly.

Network settings: IP, Mask, and Gateway of PET-7000.

| Item | Default |
|-------------|---------------|
| IP Address | 192.168.255.1 |
| Subnet Mask | 255.255.0.0 |
| Gateway | 192.168.0.1 |

Installing Software

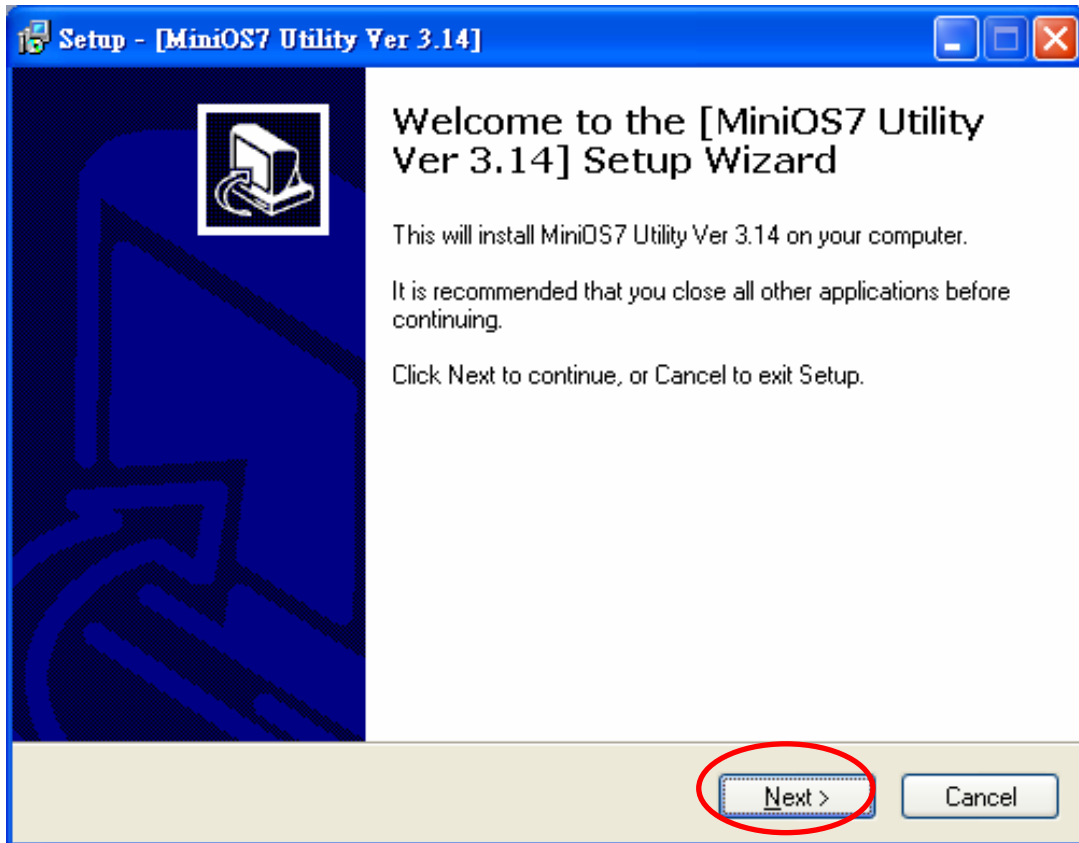
The PC tool “**MiniOS7 utility**” used to configure network settings is located on the shipment CD and FTP.

CD: \NAPDOS\ET6000\Tools\Tools for MiniOS7\

ftp://ftp.icpdas.com/pub/cd/6000cd/napdos/et6000/tools/tools_for_minios7/minios7_utility/

MiniOS7 utility installation procedure:

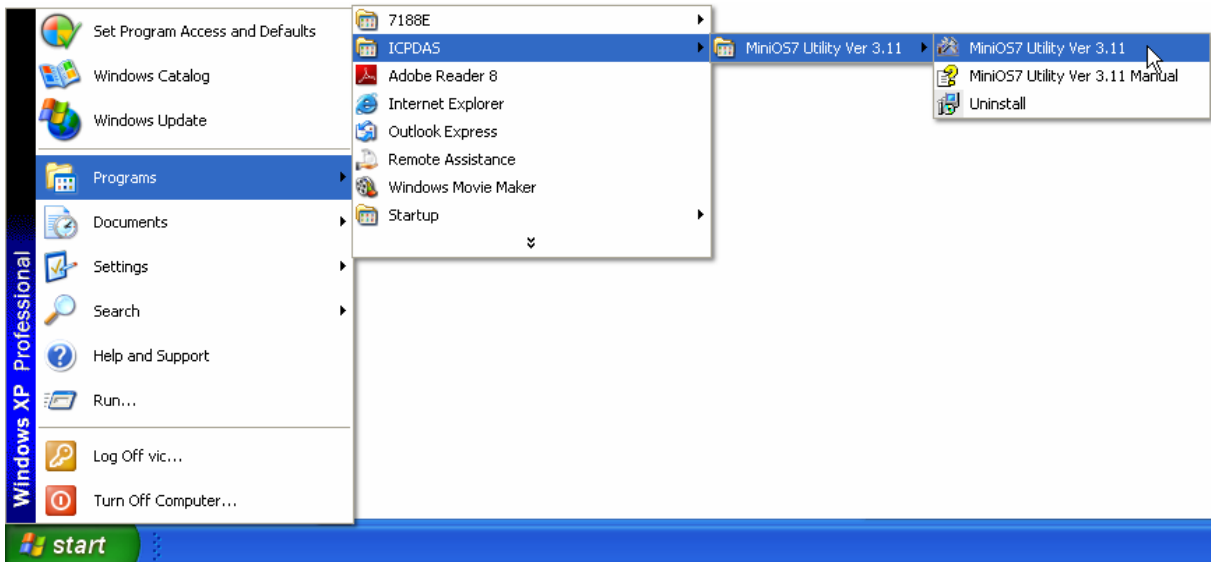
1. **Double Click** the “Setup.exe” to start installing.
2. **Click** on “Next” when the Welcome window opens.



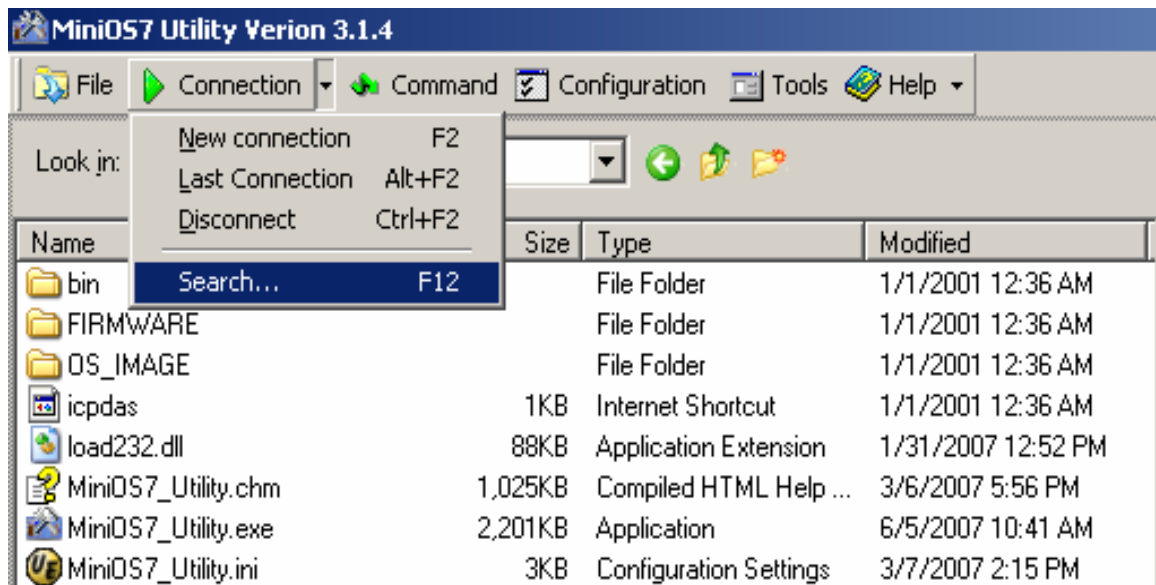
3. **Click** on “Next” to install program files in the default directory, or select an alternative location by pressing “Browser...”.
4. **Select** the folder using in list of “Start Menu” >> “Program”>>, and then click on “Next” to continue
5. **Click** on “Next” to proceed with the installation.
6. **Click** on “Finish” to complete the installation.

Configuring the network settings


1. Run the MiniOS7 utility

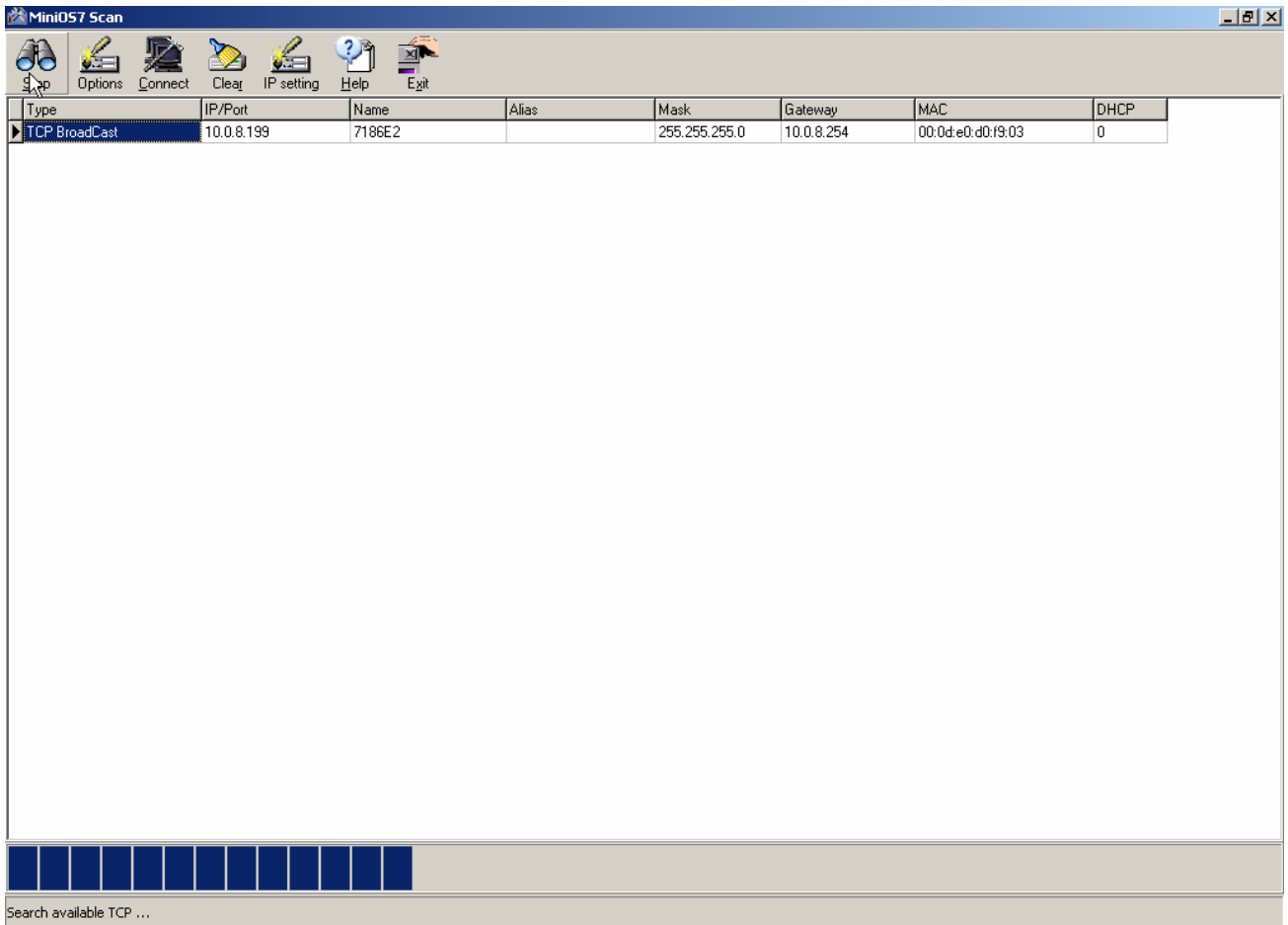



2. Click the Search item on the main menu to scan the modules on the Ethernet network.

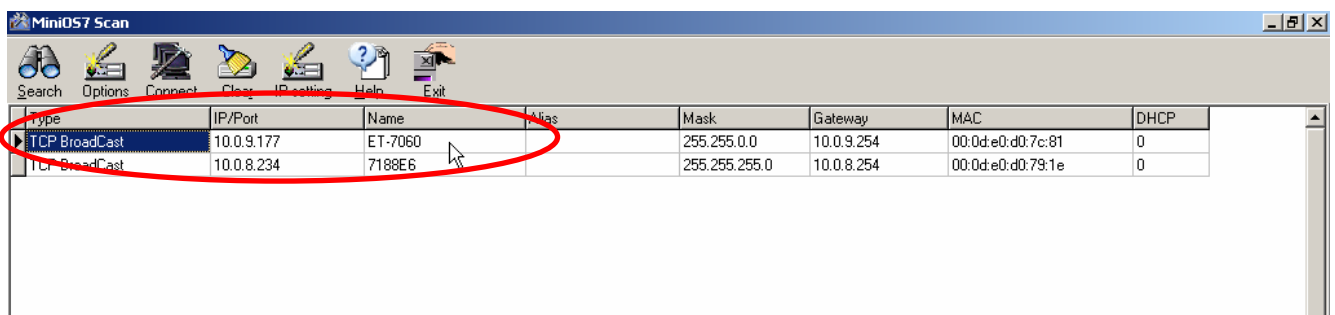


3. The Search Progress will show on the bottom of the “MiniOS7

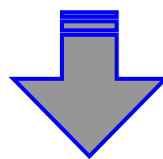
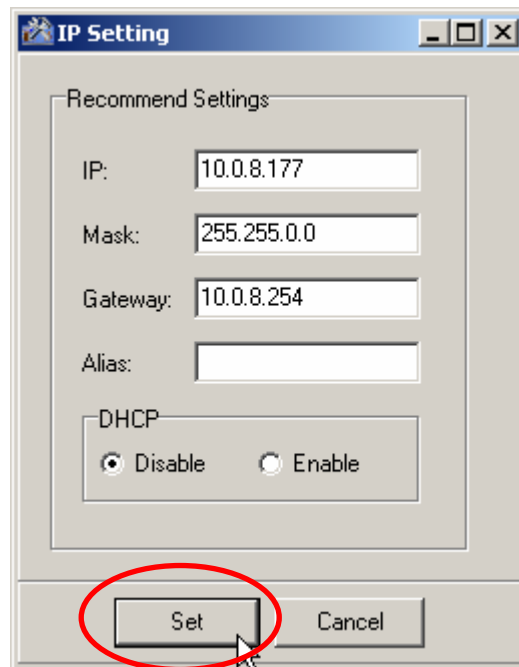
Scan” windows. Users can press  button to cancel the search procedure.



4. Choose the found module in the table and Press  button to configure IP settings.



5. The pop-up “IP Setting” dialog box shows the current IP settings. Users can change the setting on each item and then press the “Set” button to make the settings take effect.



Click the “Set” button will cause the PET-7000 to reboot to make the settings effective.

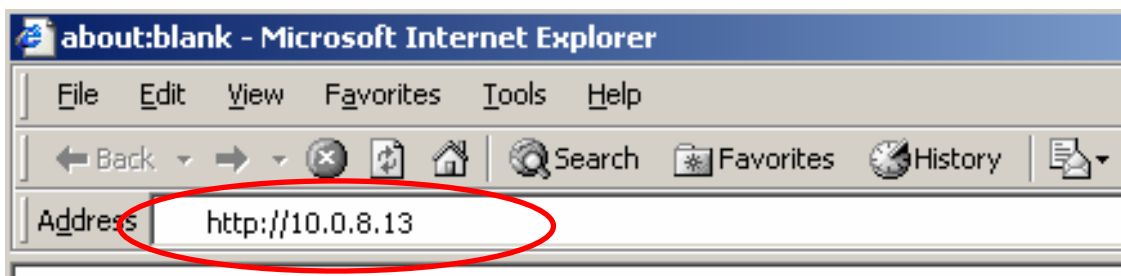
6. **Search** again to check whether the settings have been changed or not.

| Type | IP/Port | Name | Alias | Mask | Gateway | MAC | DHCP |
|---------------|------------|---------|-------|---------------|------------|-------------------|------|
| TCP BroadCast | 10.0.9.177 | ET-7060 | | 255.255.0.0 | 10.0.9.254 | 00:0d:e0:d0:7c:81 | 0 |
| TCP BroadCast | 10.0.8.234 | 7188E6 | | 255.255.255.0 | 10.0.8.254 | 00:0d:e0:d0:79:1e | 0 |

Connecting to the PET-7000

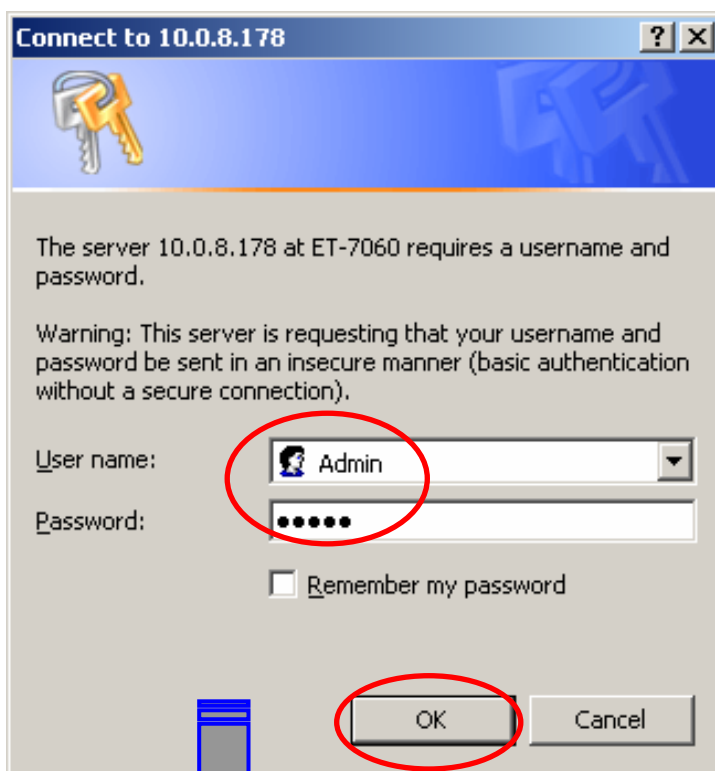
-- by web browser

1. **Start up** the web browser (Internet Explorer, Mozilla or Firefox), input the URL address of the PET-7000 (such as `http://10.0.8.13`) and then press “Enter” key to link to the PET-7000.



2. **Input** the User name and Password.

| Item | Default |
|-----------|------------------------|
| User name | Admin (Case sensitive) |
| Password | Admin (Case sensitive) |



ICPDAS
<http://www.icpdas.com>

Welcome to the ET7000 Web configuration page

| | |
|--------------------|--------------------|
| Model Name | ET-7060 |
| MAC Address | 0:d:e0:d0:6d:47 |
| Module Information | |
| Firmware Version | V100 (May 25 2007) |
| OS Version | V226 (May 23 2007) |
| DI channels | 6 |
| DO channels | 6 |
| AI channels | 0 |
| AO channels | 0 |

The diagram illustrates the system architecture. On the left, SCADA, IPC/PC, and Web Browser are connected to a central TCP/IP Ethernet hub. This hub is connected to three ET7000 modules (PAC). These modules are then connected to a variety of I/O components, including sensors, actuators, and other industrial devices.

- Main Menu
- Overview
- Configuration
 - Network Settings
 - Basic Settings
 - Module I/O Settings
- Authentication
 - Account Management
 - Accessible IP Settings
- Web HMI
 - Web HMI
 - Web Editing
- Peer Connection
- More Information

The brief description of the Web page configuration function is listed on six main functions of the tree structure.

Technical Support

If you have problems about using the PET-7000 series modules, please contact ICP DAS Product Support.

Email: Service@icpdas.com

When requesting technical support, providing the following information about your system for us is expected.

1. Module name and serial number: the serial number can be found from the barcode label attached to the cover of the module.
2. Firmware and OS version: See **Overview** on the web browser linked to PET-7000 as showed as page11 for getting the firmware/OS version information.
3. Host configuration:
 - 3-1. Host type: PC, PLC or other host device
 - 3-2. Operating system (If needed)
 - 3-3. Web browser tool (ex. IE, Firefox, Mozilla ...) and version
4. If the problem is reproducible, please give full details describing the procedure used to reproduce the problem.
5. Specific error messages displayed. If a dialog box with an error message is displayed, please include the full text of the dialog box, including the text in the title bar.
6. If the problem involves other programs or hardware devices, please describe the details of the problem in full.
7. Any comments and suggestions related to the problem are welcome.

ICP DAS will reply to your request by email within three business days.

May 2009