



Making Data Acquisition Easy

CAGE/NCAGE CODE: 3FNFO



Quick Start Guide for WISE-7160

Welcome!

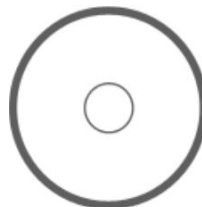
Thank you for purchasing WISE-7160 – one of the most cost-effective automation solutions for remote monitoring and control applications. This Quick Start Guide will provide you with minimum information to get started with WISE-7xxx. It is intended for use only as a quick reference. For more detailed information and procedures, please refer to the full user manual on the CD included in this package.

What's In the Box?

In addition to this guide, the package includes the following items:



WISE-7160 Module



Software Utility CD



Screw Driver

Technical Support

- **WISE -7160 Website**
http://www.icpdas-usa.com/wise_7160.html
- **ICP DAS USA Website**
<http://www.icpdas-usa.com/>

Phone : 1-310-517-9888
Email: sales@icpdas-usa.com
Tech Support: tech@icpdas-usa.com

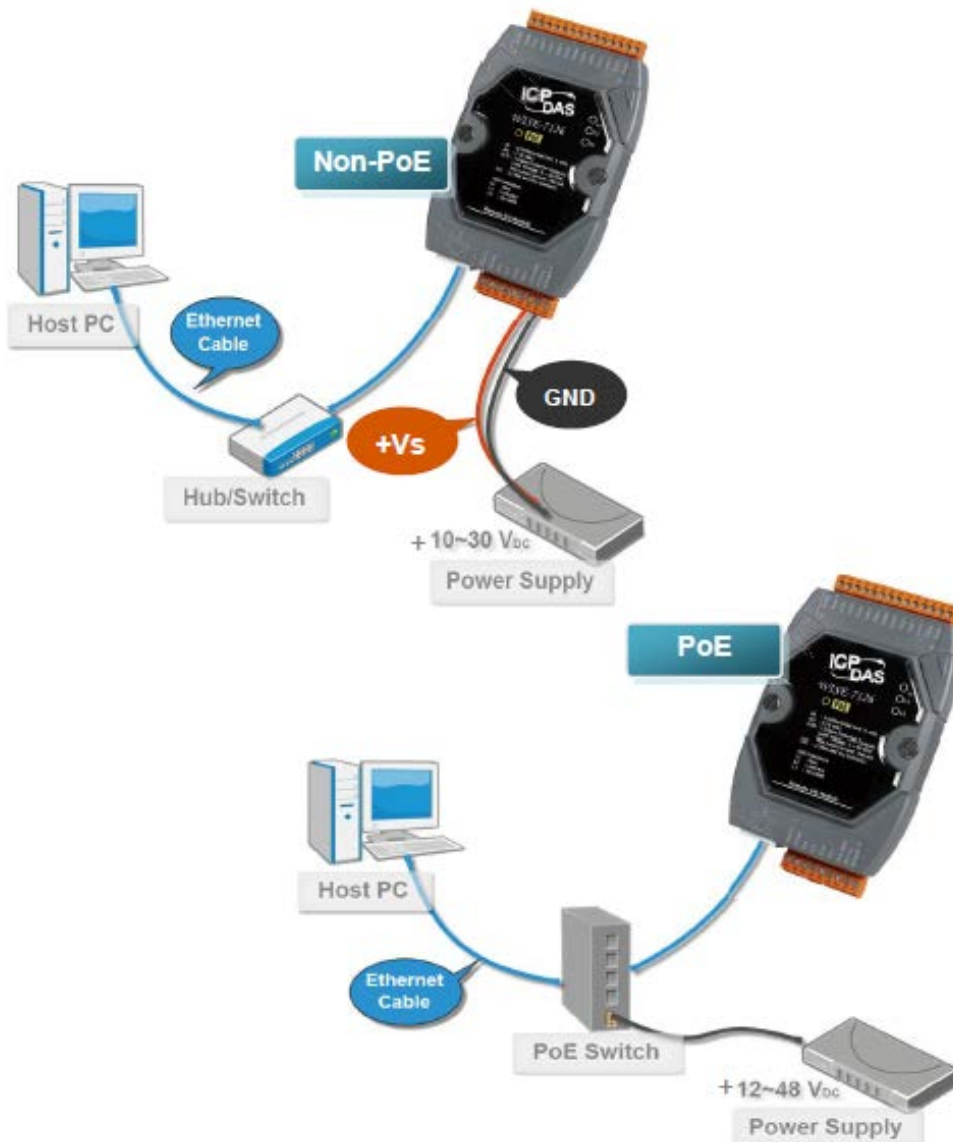


1 | Configure Boot Mode

Make sure the switch is in the "Normal" position.

2 | Connect to Network, PC and Power

Connect to Ethernet hub/switch and PC via the RJ-45 Ethernet port.



3. Install MiniOS7 Utility

Step 1: Get the MiniOS7 Utility tool

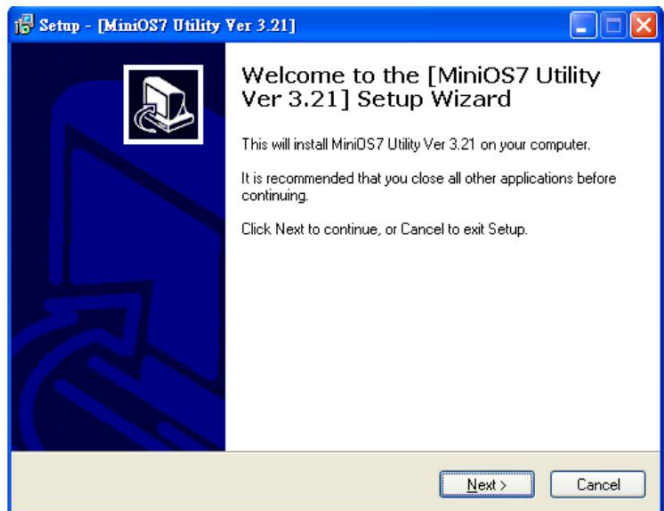


The MiniOS7 Utility can be obtained from companion CD or our FTP site:

CD: \Tools\MiniOS7_UTILITY\

ftp://ftp.icpdas.com/pub/cd/wise_cd/tools/minios7_utility/

Step 2: Follow the prompts to complete the installation



After the installation has been completed, a new short-cut for MiniOS7 Utility will appear on the desktop.

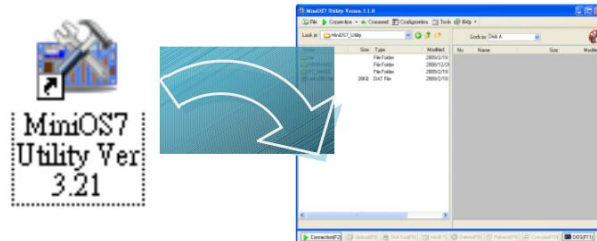
4. Assign a New IP by MiniOS7 Utility

WISE-7xxx comes with a default IP address; please assign a new IP address to the WISE module. The factory default IP settings are as follows:

Item	Default
IP Address	192.168.255.1
Subnet Mask	255.255.0.0
Gateway	192.168.0.1

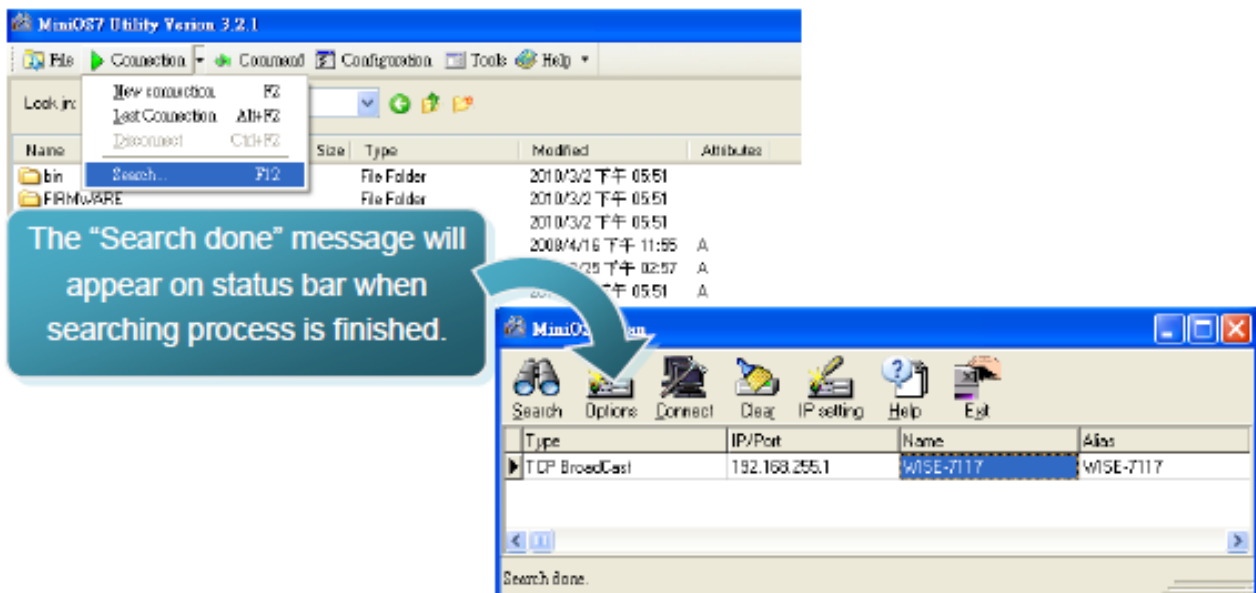
Step 1: Run MiniOS7 Utility

Double-click the MiniOS7 Utility shortcut on your desktop.



Step 2: Press “F12” or click “Search” from the “Connection” menu

Press “F12” or click “Search” from the Connection menu, a MiniOS7 Scan dialog will appear and will display all the MiniOS7 modules that are currently connected to your network.



Step 3: Select the module name and then click “IP setting” from the toolbar

Select the module name from the list of the fields, and then click “IP setting” from the toolbar.

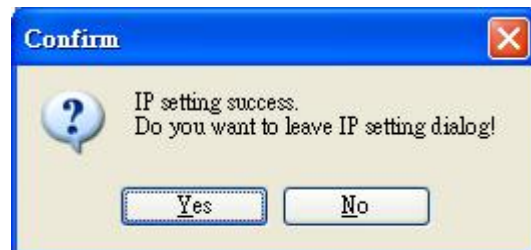


Step 4: Assign a new IP address and then click “Set” button



Step 5: Click “Yes” button

After completing the settings, click the “Yes” button to save and exit the procedure.



5. Go to WISE-7xxx Web Site to edit control logic.

Please follow the steps below to implement IF-THEN-ELSE control logic on controllers:

Step 1: Open a browser

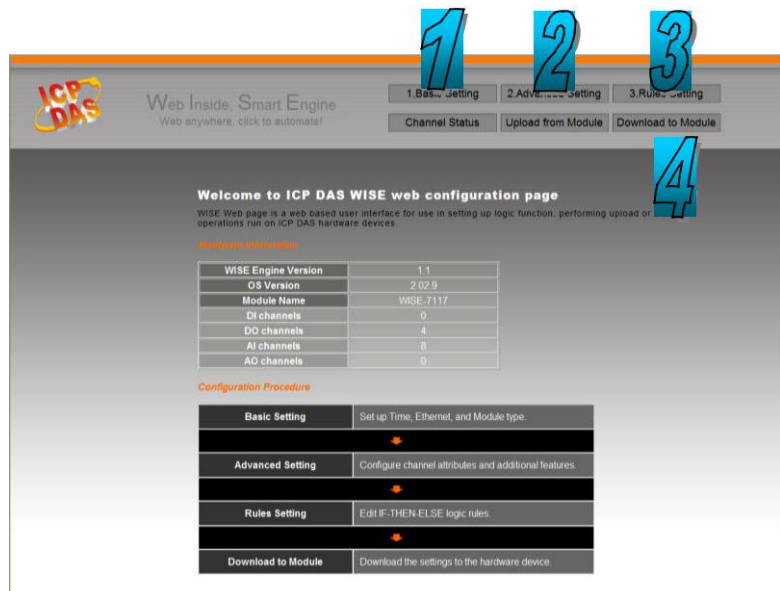
Open a browser (recommended internet browsers: Mozilla Firefox or Internet Explorer).

Step 2: Type in the URL address of the WISE-7xxx

Make sure the IP address assigned is accurate (please refer to section 4: "Assign a New IP by MiniOS7 Utility). Type in the URL address of the WISE-7xxx module in the address bar.

Step 3: Get on the WISE-7xxx web site

Get on the WISE-7xxx web site. Implement the control logic configuration in the order as indicated in the diagram.



The screenshot shows the WISE web configuration interface. At the top, there are navigation buttons: '1. Basic Setting', '2. Advanced Setting', and '3. Rules Setting'. Below these are 'Channel Status', 'Upload from Module', and 'Download to Module'. The main content area has a '4' pointing to the 'Download to Module' button. A table displays system information:

Hardware Information	
WISE Engine Version	1.1
OS Version	2.029
Module Name	WISE-7117
DI channels	0
DO channels	4
AI channels	8
AO channels	0

Below the table is the 'Configuration Procedure' section with buttons for 'Basic Setting', 'Advanced Setting', 'Rules Setting', and 'Download to Module', each with a brief description of its function.

Step 4: Edit Basic Settings

Modify the Alias of the WISE module, Ethernet setting of the WISE module, the analog input/output range, or the downloading password in the Basic Setting page as needed.

Module Setting Page

Module: WISE-7117

AI Voltage & Current Input

AI0	AI1	AI2	AI3
-150 mV ~ 150 mV	-150 mV ~ 150 mV	-150 mV ~ 150 mV	-150 mV ~ 150 mV
AI4	AI5	AI6	AI7
-150 mV ~ 150 mV	-150 mV ~ 150 mV	-150 mV ~ 150 mV	-150 mV ~ 150 mV

Save

Ethernet Setting Page

IP: 192 . 168 . 100 . 249

Mask: 255 . 255 . 255 . 0

Gateway: 192 . 168 . 100 . 254

Save

Step 5: Edit Advanced Settings

Edit channel attribute, internal register, Timer, Email, CGI commands, Recipe, and P2P configuration settings in the Advanced Setting page as needed.

DO Attribute Setting Page

Module & Channel: WISE-7117 Channel 0

Power On Value: OFF

Counter

Condition: Disable

Initial Value: 0

Enable Pulse Output

Pulse High: 0 X 10ms

Pulse Low: 0 X 10ms

Timer Setting Page

Timer Amount: 0

Index: [dropdown]

Period: 0 Sec

Initial Status: Stop

Recipe Attribute Setting Page

Recipe Amount: 0

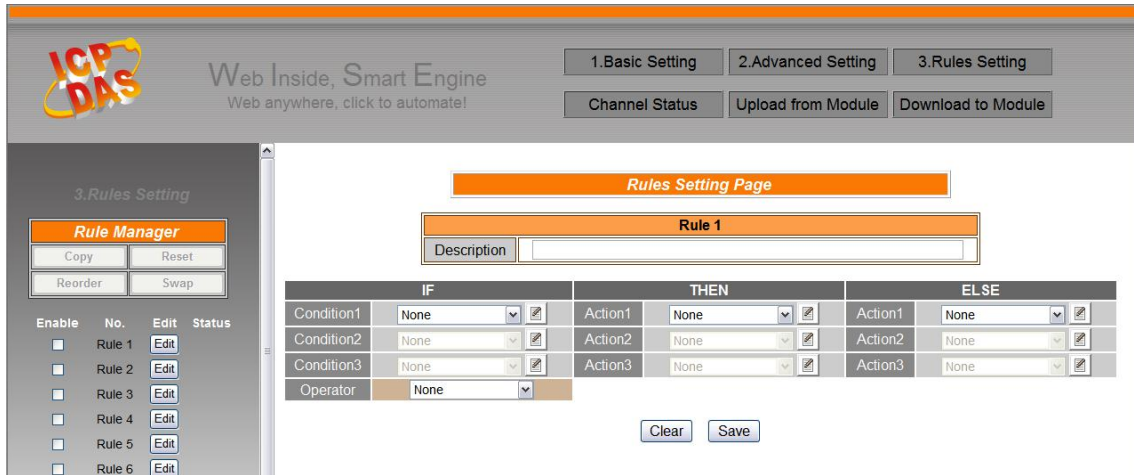
Index: [dropdown]

Action: None Add

Save

Step 6: Edit Rule Settings

Edit your IF-THEN-ELSE rules in the Rules Setting page.



Step 7: Download to Module

After finishing rules setting, download the rules to the WISE module. The WISE module will reboot and execute the rules automatically.

