



Making Data Acquisition Easy

CAGE/NCAGE CODE: 3FNFO

M-7065D

5 Channel Power Relay Output and 4 Digital Input (Counter) Data Acquisition Module

Quick Start Guide

Product Website:

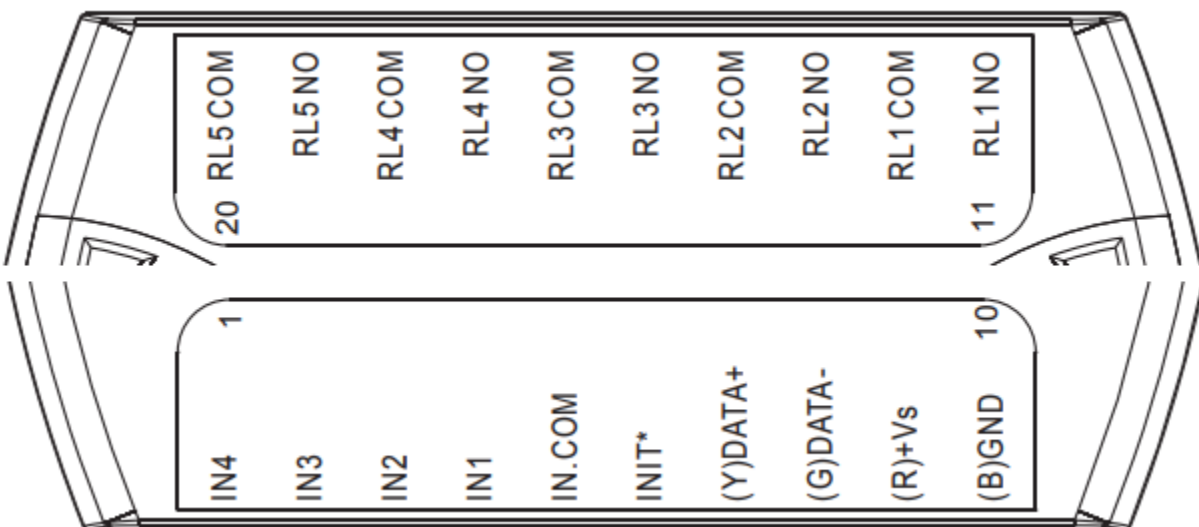
https://www.icpdas-usa.com/m_7065d.html

http://www.icpdas-usa.com/dcon_utility_pro.html

1. Introduction

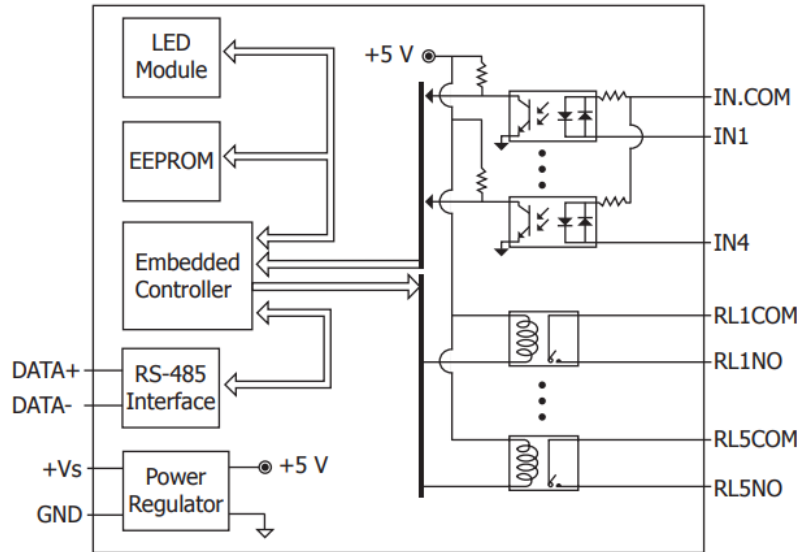
M-7065D is a data acquisition and control module, digital input/output. The module can be remotely controlled using a set of commands, which we call the DCON protocol. Communication between the module and the host is in ASCII format via an RS-485 bi-directional serial bus standard. Baud Rates are software programmable and transmission speeds of up to 115.2K baud can be selected. The functionality of the M-7000 series is the same as the I-7000 series, except M-7000 series offers extended support for the Modbus RTU protocol.

2. Terminal Assignment





3. Block/ Wiring Diagram



Digital Input/ Counter	ON State Readback as 1	OFF State Readback as 0
Sink	OPEN or <1 VDC	+4 ~ +30 VDC
Source	OPEN or <1 VDC	+4 ~ +30 VDC

Output Type	ON State Readback as 1	OFF State Readback as 0
Relay Output		



Making Data Acquisition Easy

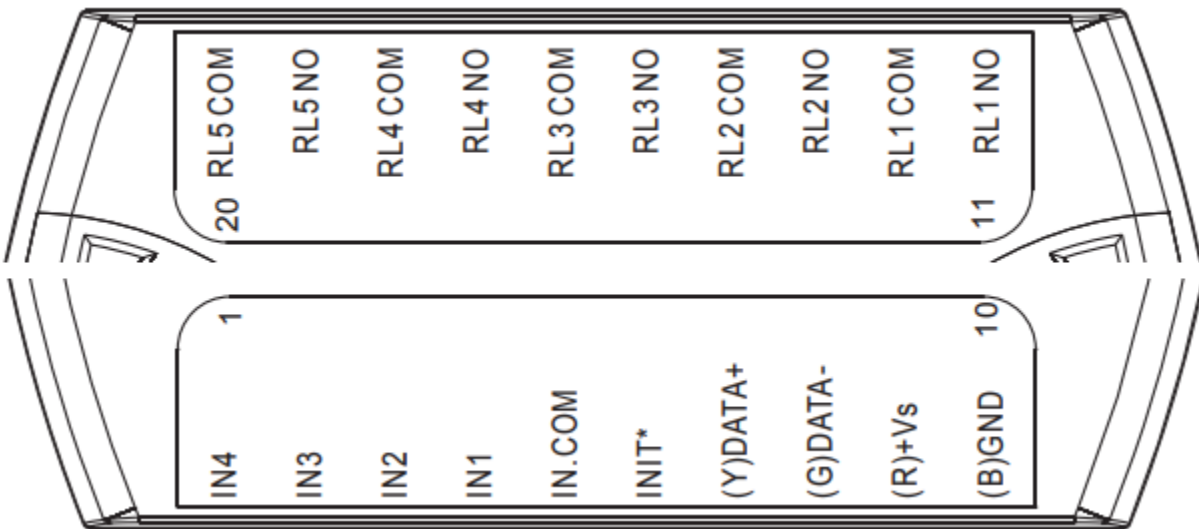
4. Default Settings

- Module Address: 01
- DIO Type: Type 40
- Baud Rate: 9600 bps
- Checksum disabled

5. Configuration

To install the module, follow the steps below:

1. Connect the digital input and output.
2. Connect the module to the RS-485 network using the DATA+ and DATA- terminals. If the host is only equipped with an RS-232 interface, then an RS-232 to RS-485 converter will be required.
3. Connect the module to the power supply using the +Vs and GND terminals. Note that the voltage supplied should be in the range of +10 to +30V DC.





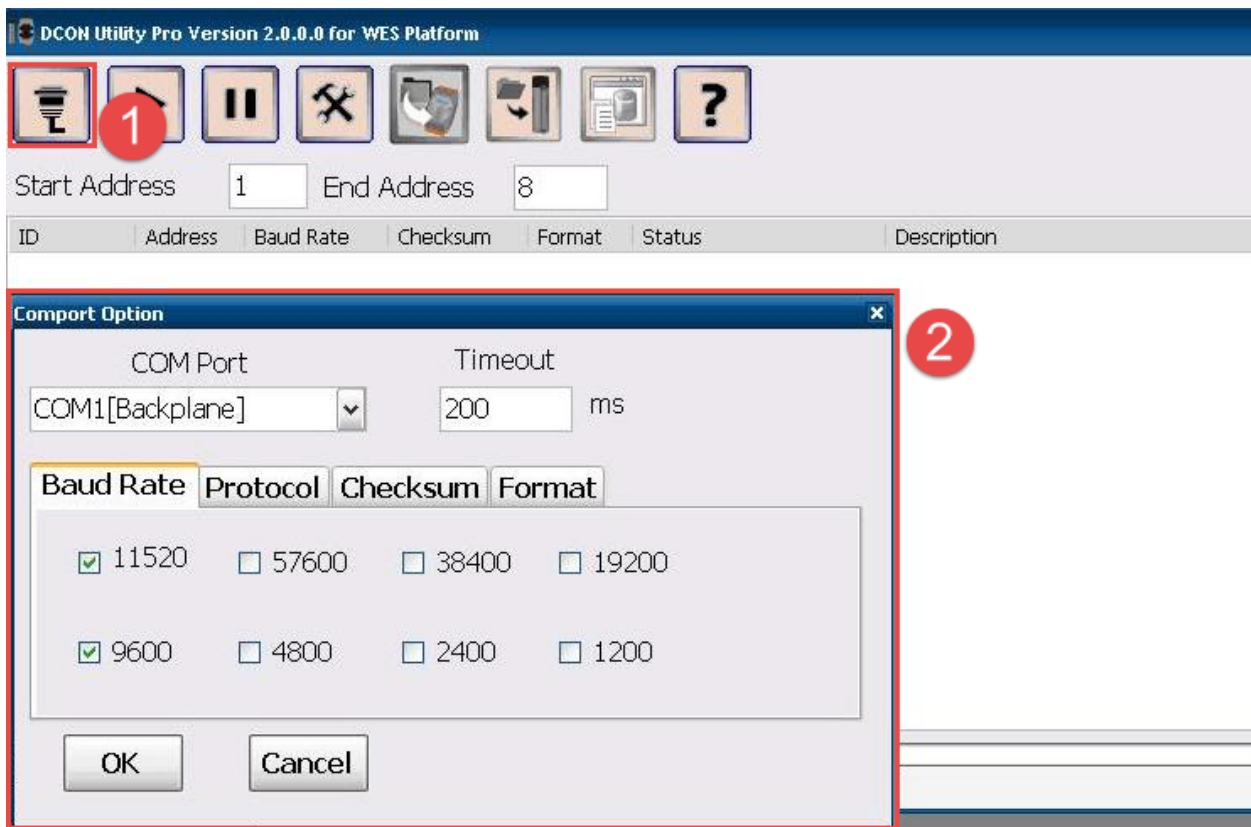
Making Data Acquisition Easy

CAGE/NCAGE CODE: 3FNFO



4. Open DCON utility pro

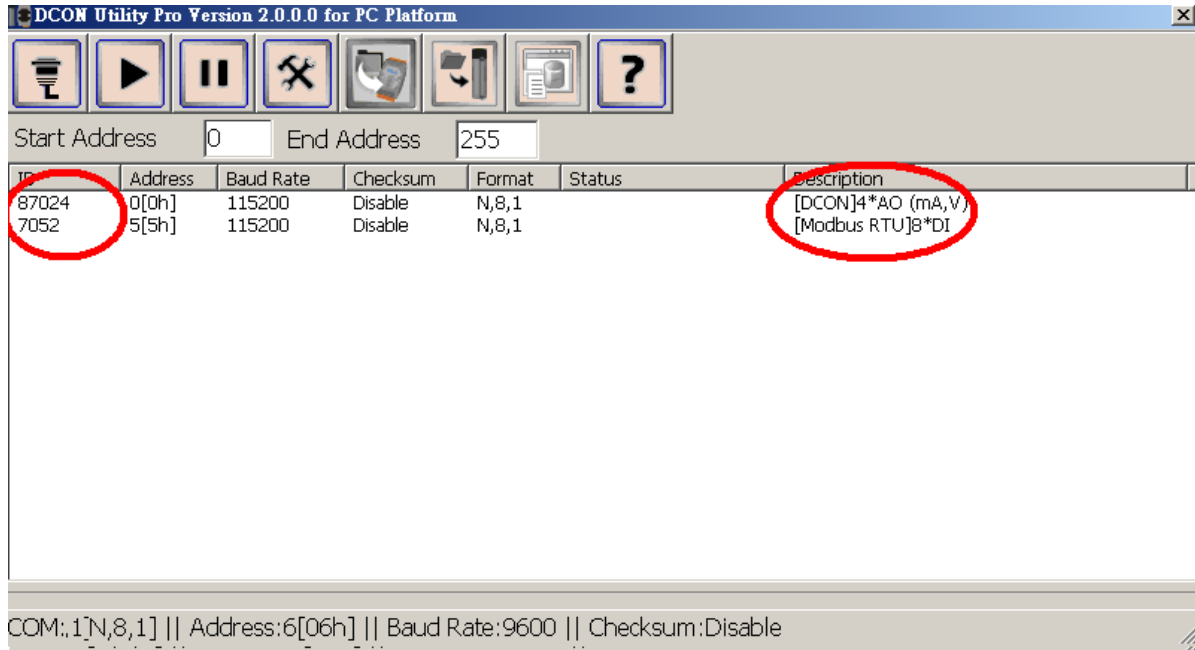
- 1 click on COM port(first icon).
- 2 It can select multi-options such as Baud Rate, Protocol, Checksum, and Format to search module. The default settings for the module can be found in Section 3. Click OK after selecting the COM port setting.



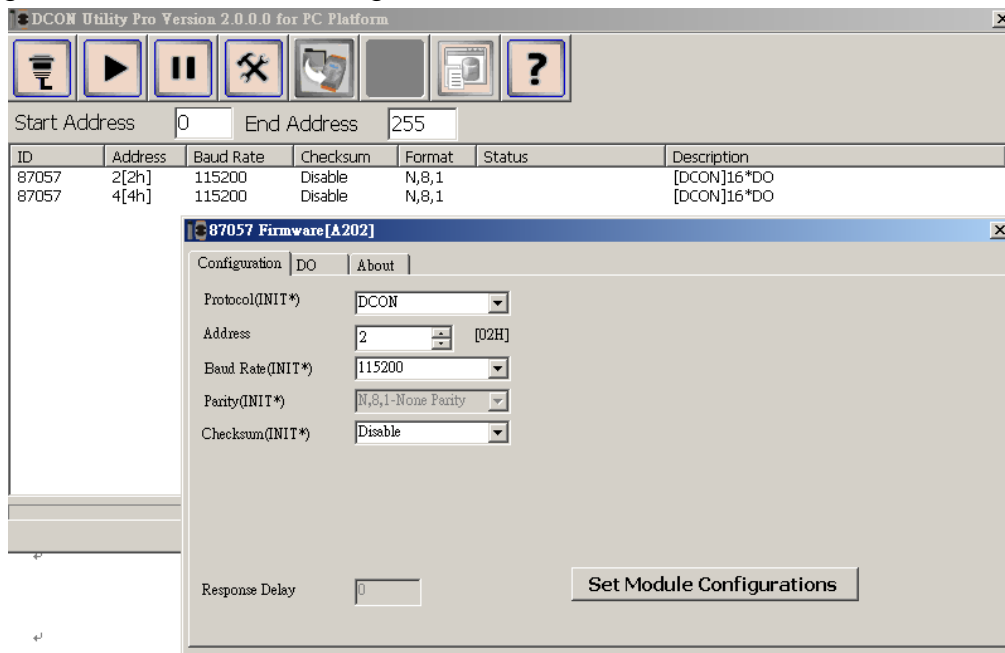


Making Data Acquisition Easy

5. DCON utility pro will search for the selected COM port according the setting previously set. DCON Utility Pro supports DCON and Modbus protocol for all ICPDAS and the others modules.



6. Configuration I/O module setting on PC

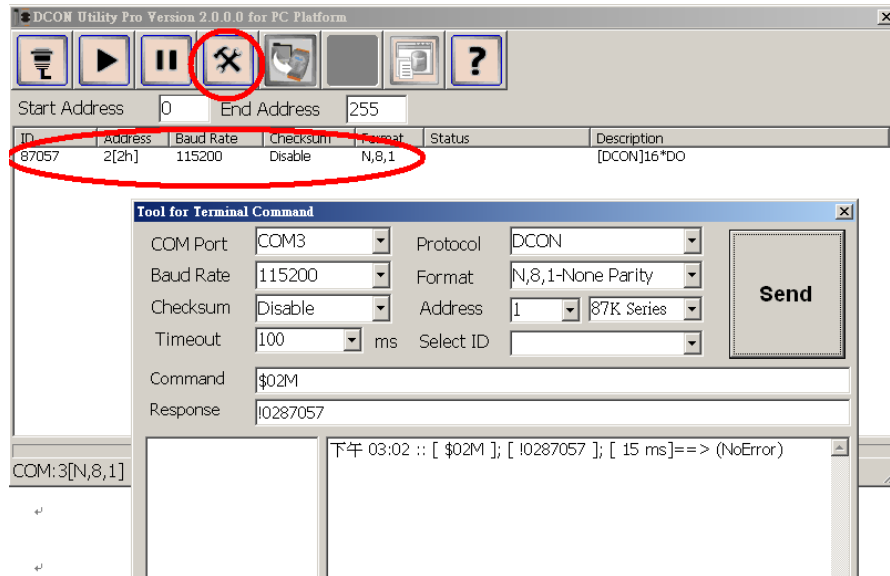




7. For I-7000 modules, DCON utility pro terminal can send command to the module. See user manual Sections 2 for details command.

Configure the module: sending the %AANNTTCCFF command. See user manual Section 2 for details.

Read data from the input channels: send either the #AA or #AAN command to the module.



8. If user doesn't know command, user can select Address and ID, it will show some refer commands as below. User can select necessary command to test or debug modules.

