



Making Data Acquisition Easy

CAGE/NCAGE CODE: 3FNFO

I-7560 USB to RS-232 Converter Quick Start Guide

Product Website:

http://www.icpdas-usa.com/i_7560.html

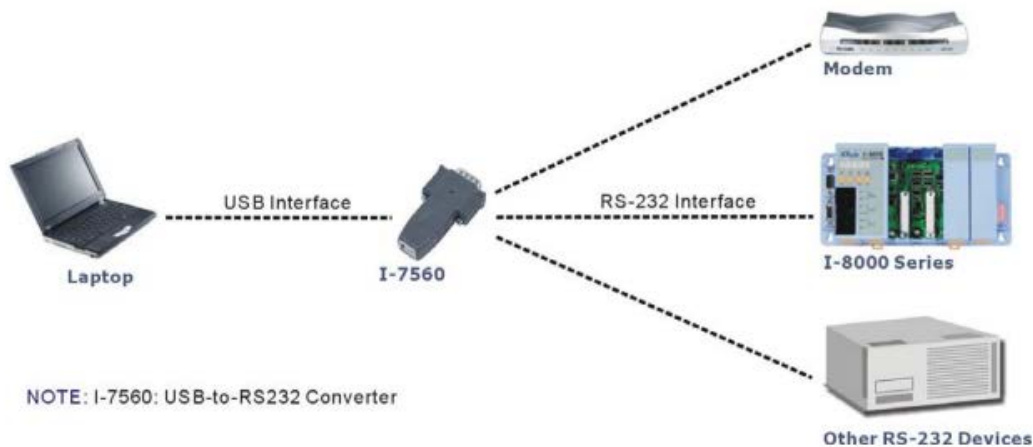
1. Introduction

The I-7560/I-7560U provides a Windows serial COM port via it's USB connection and is compatible with new and legacy RS-232 devices. USB Plug-and-Play allows easy serial port expansion and requires no IRQ, DMA, or I/O port settings manually.

The I-7560/I-7560U features a full set of RS-232 modem data and control signals (TxD, RxD, RTS, CTS, DSR, DTR, DCD, RI and GND) on it's PC compatible DB-9 male connector. It also features a high-speed 115200 bps transmission rate.

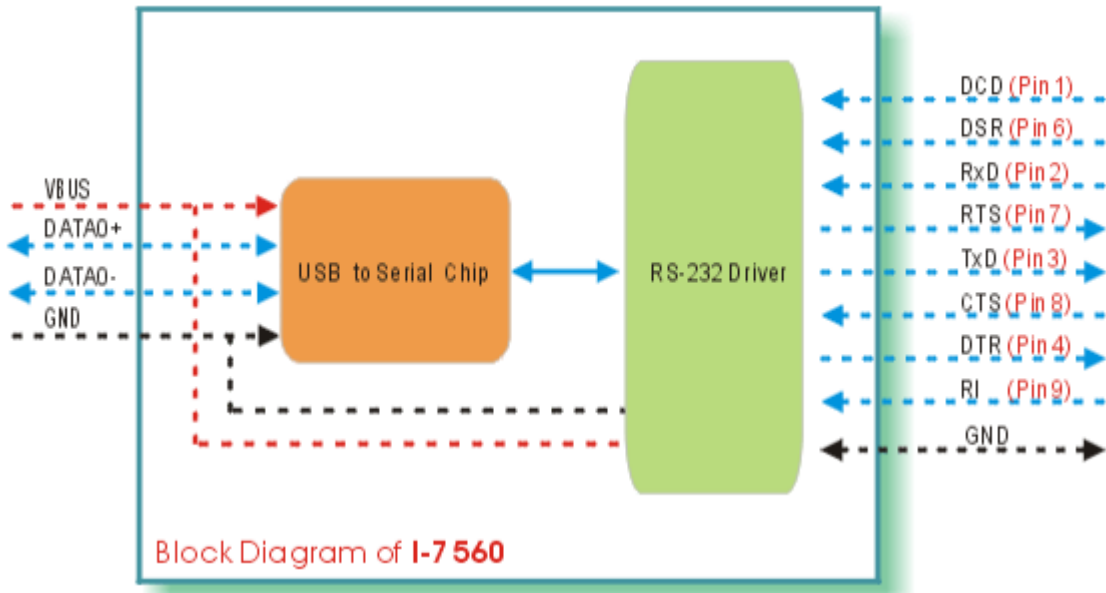
The I-7560/I-7560U is powered from the USB bus and no additional power supply is needed.

2. System Network Configuration





3. Block Diagram





Making Data Acquisition Easy

CAGE/NCAGE CODE: 3FNFO

4.Driver Installation

Installing the Device

Download driver files and install

1. Package CD \Napdos\7000\756x\7560
2. <http://www.icpdas-usa.com/documents/drivers/756x/756x.zip>

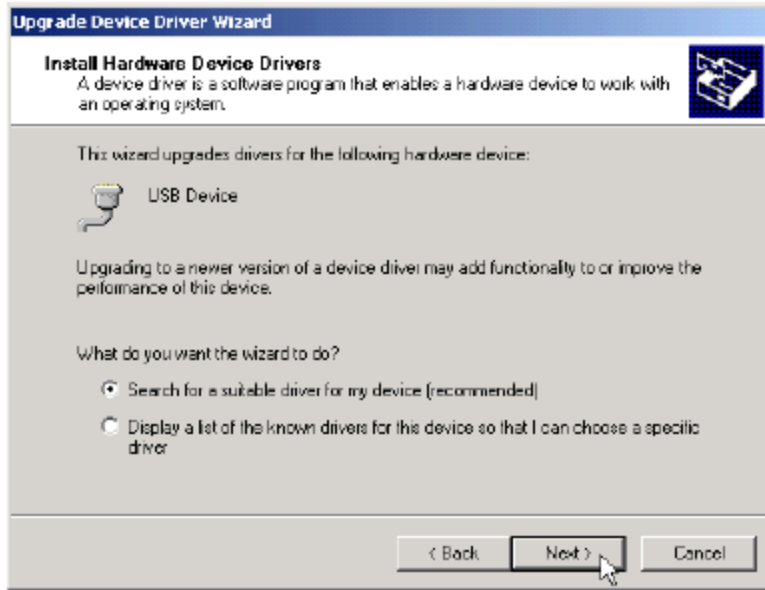
The following steps will show how to install the device under Windows 7.

1. Power on your computer and boot to Windows.
2. Locate the USB port of your computer and plug in the I-7560.
3. Windows will detect the new device and will initiate the Found New Hardware Wizard prompting you to install the software for the detected USB Device. Select to install from a list or specific location. Click Next to continue.

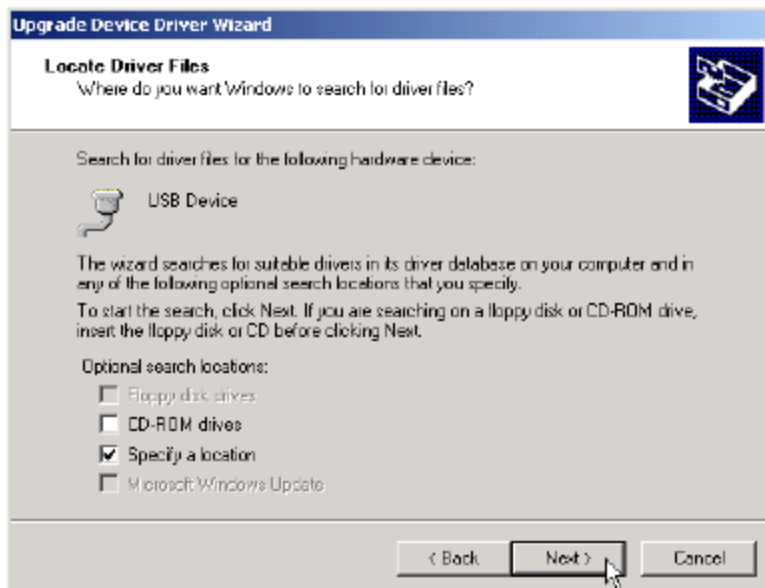




4. An "Install Hardware Device Drivers" window is shown. Click "Next" to initiate a search for a suitable driver for your device.

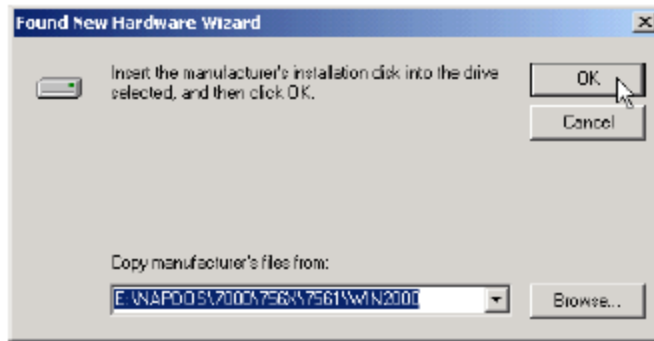


5. Select the "Specify a location" optional search locations. If the "CD-ROM drives" checkbox is selected, please insert the driver CD. Click "Next" to start the search.

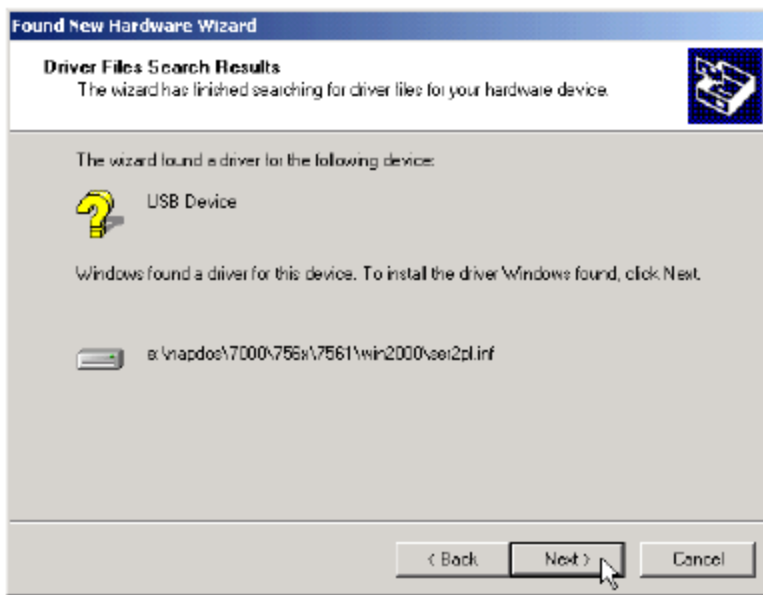




6. If the "Specify a location" is selected, you must choose the correct path. Enter E:\Napos\7000\756x\7561(The 'E' is the Disk that Package CD put in). Click "OK" to start the search.



7. Once Windows finds the correct driver, click "Next" to install the driver.

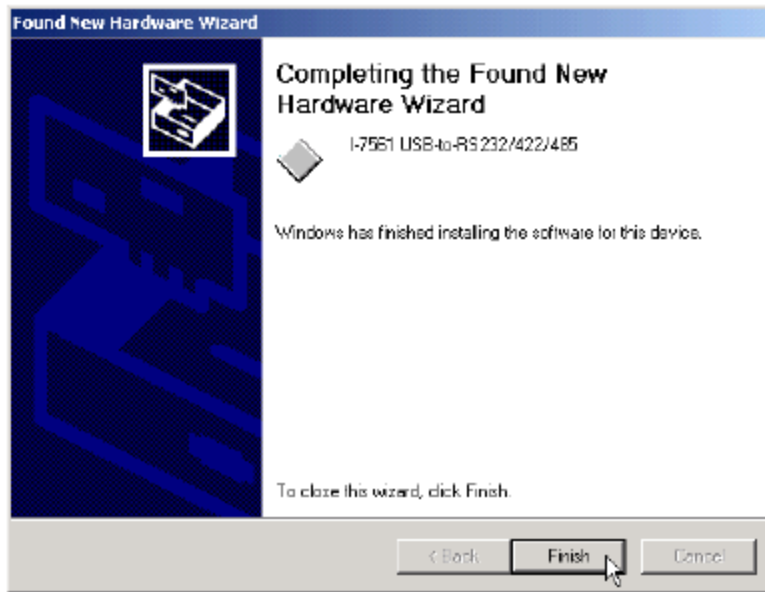




Making Data Acquisition Easy

CAGE/NCAGE CODE: 3FNFO

- Windows will then install the driver for the USB-to-RS232/422/485. Once installation is complete, Windows will notify you that it has finished installing the software. Click "Finish" to continue.



NOTE: When you finish the driver installation, please unplug the USB cable, and then plug the USB cable again.



Verify driver installation

This section will show you on how to verify whether the I-7560 was properly installed. You will also need to determine the COM port assignment made by Windows for the USB to RS-232/422/485 converter.

Note: Before you connect the I-7560 for the first time, ensure that you do not attach any serial devices to the converter. You must only connect the I-7560 itself.

To verify whether the device is properly installed and determine the COM port assignment for the device:

1. Click “Start” > “Control Panel” > “Device Manager” button. Double-click on Ports (COM & LPT). If the device was correctly installed, you should now see the I-7560 USB-to-RS232 (COM10) device listing. This also means that Windows has assigned the device to the COM10 port.
2. Once you have verified that the device has been properly installed, you may now proceed to use the USB-to-RS232/422/485 Converter to connect to serial devices. Attach the serial device to the serial port of the adapter and then connect the USB connector to the USB port of your computer. Use the supplied driver for the serial device if needed.

