



Making Data Acquisition Easy

CAGE/NCAGE CODE: 3FNFO

# ***GW-7472***

## ***EtherNet/IP to Modbus RTU / Modbus TCP***

### ***Gateway***

#### **Quick Start Guide**

Product Website:

[https://www.icpdas-usa.com/gw\\_7472.html](https://www.icpdas-usa.com/gw_7472.html)

# 1

## **What's in the shipping package?**

The package includes the following items:



**GW-7472**



**Software CD**



**Quick Start Guide**  
(This Document)



**CA-002**  
(DC connector to  
2-wire power cable)

# 2

## **Installing software on your PC**

### **■ Install GW-7472 Utility:**

The software is located at:

Fieldbus\_CD:\EtherNetIP\Gateway\GW-7472\Utility

<http://www.icpdas-usa.com/documents/software-GW-7472.zip>

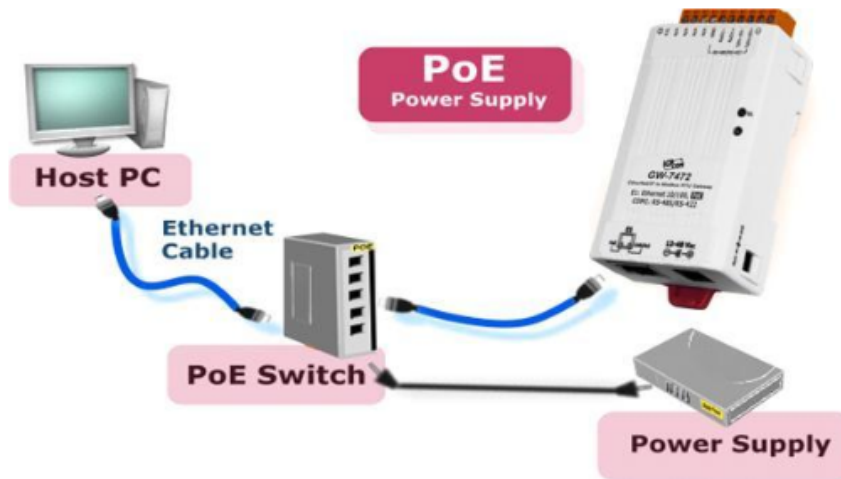
# 3 Connecting the Power and Host PC

1. Make sure your PC has workable network settings.
2. Disable or well configure your Windows firewall and anti-virus firewall first, else the "Network Scan" on step 4, 5 and 6 may not work. (Please contact with your system Administrator)
3. Check Init/Run DIP switch if it is on **Init** position.



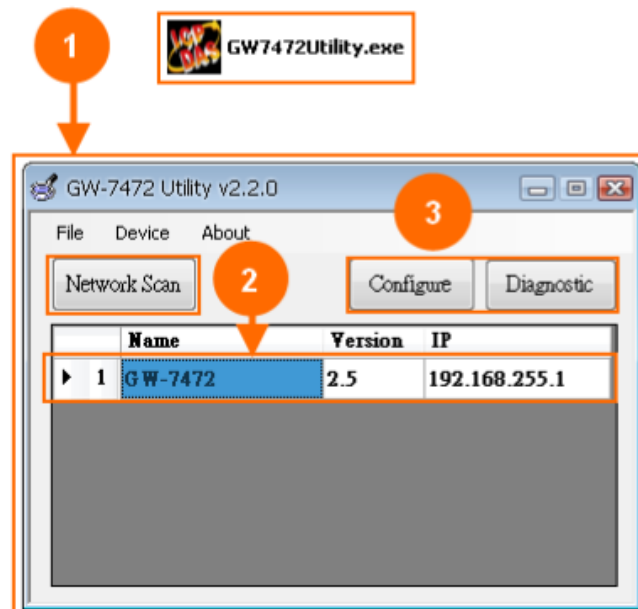
4. Connect both the GW-7472 and your computer to the same sub network or the same Ethernet switch, and power the GW-7472 on.





# 4 Searching the GW-7472

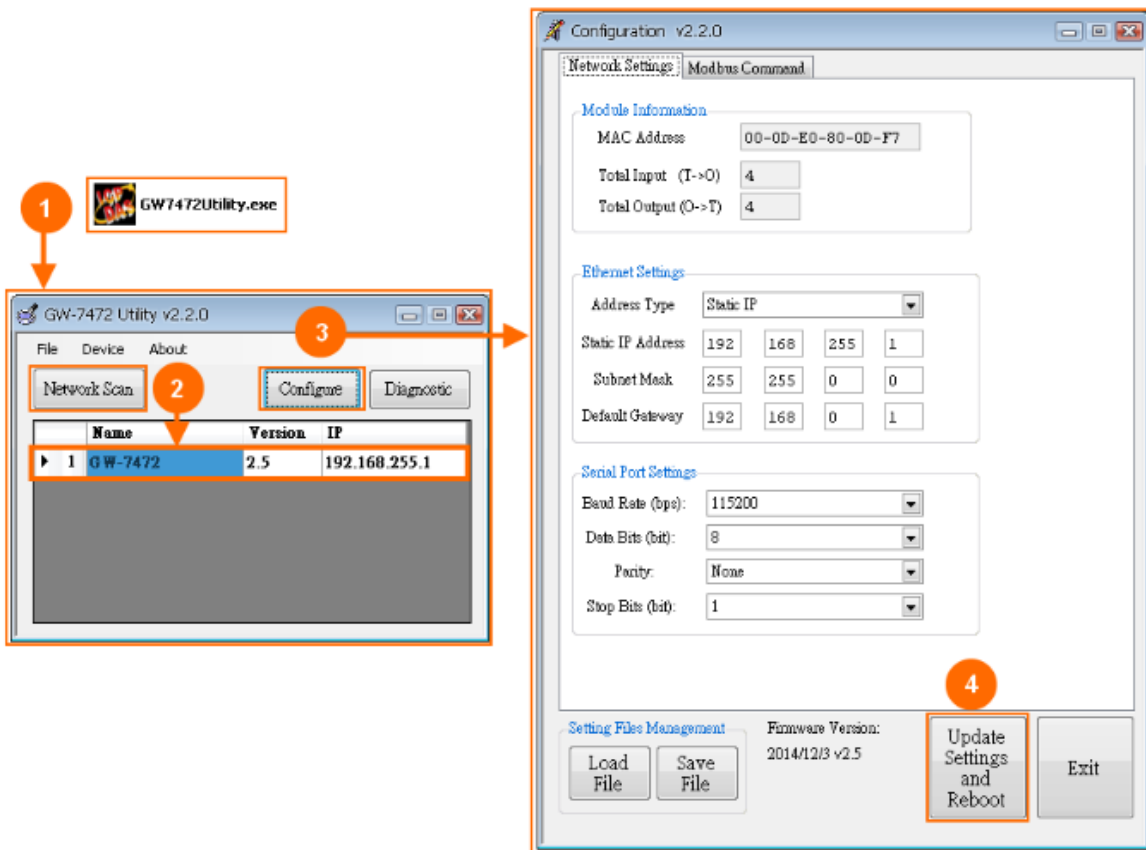
1. Double click the GW-7472 Utility shortcut on the desktop.
2. Click the "Network Scan" button to search your GW-7472.
3. Select "Configure" or "Diagnostic" buttons to configure or test the module



# 5 Module configuration

1. Double click the GW-7472 Utility shortcut on the desktop.
2. Click the "Network Scan" button to search your GW-7472.
3. Select "Configure" buttons to configure the module
4. After setting, click the "Update Settings" button to finish the

c



Item	Settings (Init Mode)
IP	192.168.255.1
Gateway	192.168.0.1
Mask	255.255.0.0

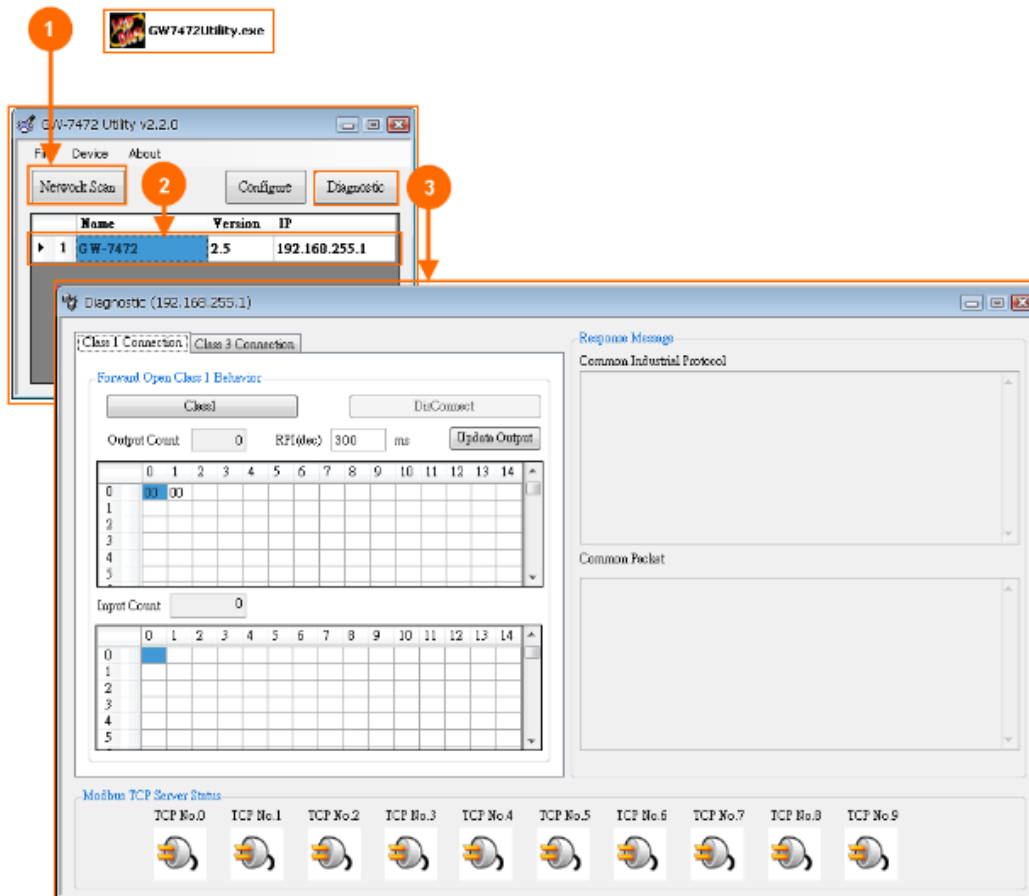


■ Item Descriptions:

Item	Description
<b>Network Settings</b>	For configuration of the <b><u>Address Type</u></b> , <b><u>Static IP Address</u></b> , <b><u>Subnet Mask</u></b> and <b><u>Default Gateway</u></b> of the GW-7472 Please refer to section “ <b>4.2.1 Network Settings</b> ”
<b>Modbus RTU Port Settings</b>	For configuration of the <b><u>Baud Rate</u></b> , <b><u>Data Sizes</u></b> , <b><u>Parity</u></b> , <b><u>Stop Bits</u></b> , of the RS-485/RS-422 port of the GW-7472 Please refer to section “ <b>4.2.2 Modbus RTU Serial Port Settings</b> ”
<b>Modbus TCP Server IP Setting</b>	For configuration of the IP of each Modbus TCP server. Please refer to section “ <b>4.2.3 Modbus TCP Server IP Settings</b> ”
<b>Setting File Management</b>	For the setting files management of GW-7472. Please refer to section “ <b>4.2.4 Setting File Management</b> ”
<b>Byte Order Setting</b>	For configuration of the order of two bytes in a word of AI and AO. Please refer to section “ <b>4.2.5 Byte Order Setting</b> ”
<b>Modbus Request Command Setting</b>	Modbus commands to communicate with the Modbus slaves Please refer to section “ <b>4.2.6 Modbus Request Settings</b> ”

# 6 Module Diagnostic

1. Check Init/Run switch if it is on **Run** position.
2. Reboot your GW-7472. Then, re-connect it by utility.
3. Click "Diagnostic" button to open diagnostic window.





Making Data Acquisition Easy

CAGE/NCAGE CODE: 3FNFO

■ Item Descriptions:

Item	Description
<b>UCMM/Forward Open Class 3 Behavior</b>	Send UCMM packets or use the Forward_Open service to build the CIP class 3 connection to communicate with the GW-7472. Please refer to section “ <b>4.3.1 UCMM/Forward Open Class 3 Behavior</b> ”
<b>Forward Open Class 1 Behavior</b>	Use the Forward_Open service to build the CIP class 1 connection to communicate with the GW-7472. Please refer to section “ <b>4.3.2 Forward Open Class 1 Behavior</b> ”
<b>Response Message</b>	EtherNet/IP packets responded from the GW-7472.
<b>Modbus TCP Servers Status</b>	The connection status of Modbus TCP servers. Please refer to section “ <b>4.3.3 Modbus TCP Servers Status</b> ”