



Making Data Acquisition Easy

CAGE/NCAGE CODE: 3FNFO

ET-7259

Ethernet I/O Module with 2-port Ethernet Switch, 8 AC/DC digital input channels

Quick Start Guide

Congratulations!

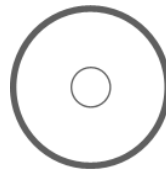
This Quick Start will provide information needed to get started with ET-7259. Please also consult the User Manual for detailed information on the setup and use of ET-7259.

What's In the Box?

In addition to this guide, the package includes the following items:



ET-7259 Module



Software Utility CD



Quick Start

Technical Support

- **ET-7259 User Manual**

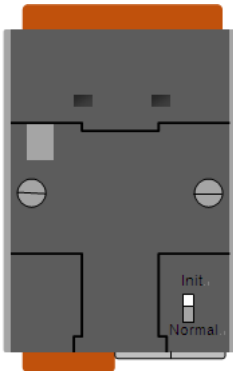
CD:\NAPDOS\NAPDOS\ET7000_ET7200\Document\

- **ET-7259 Website**

https://www.icpdas-usa.com/et_7259.html

- **ICP DAS Website**

<https://www.icpdas-usa.com>



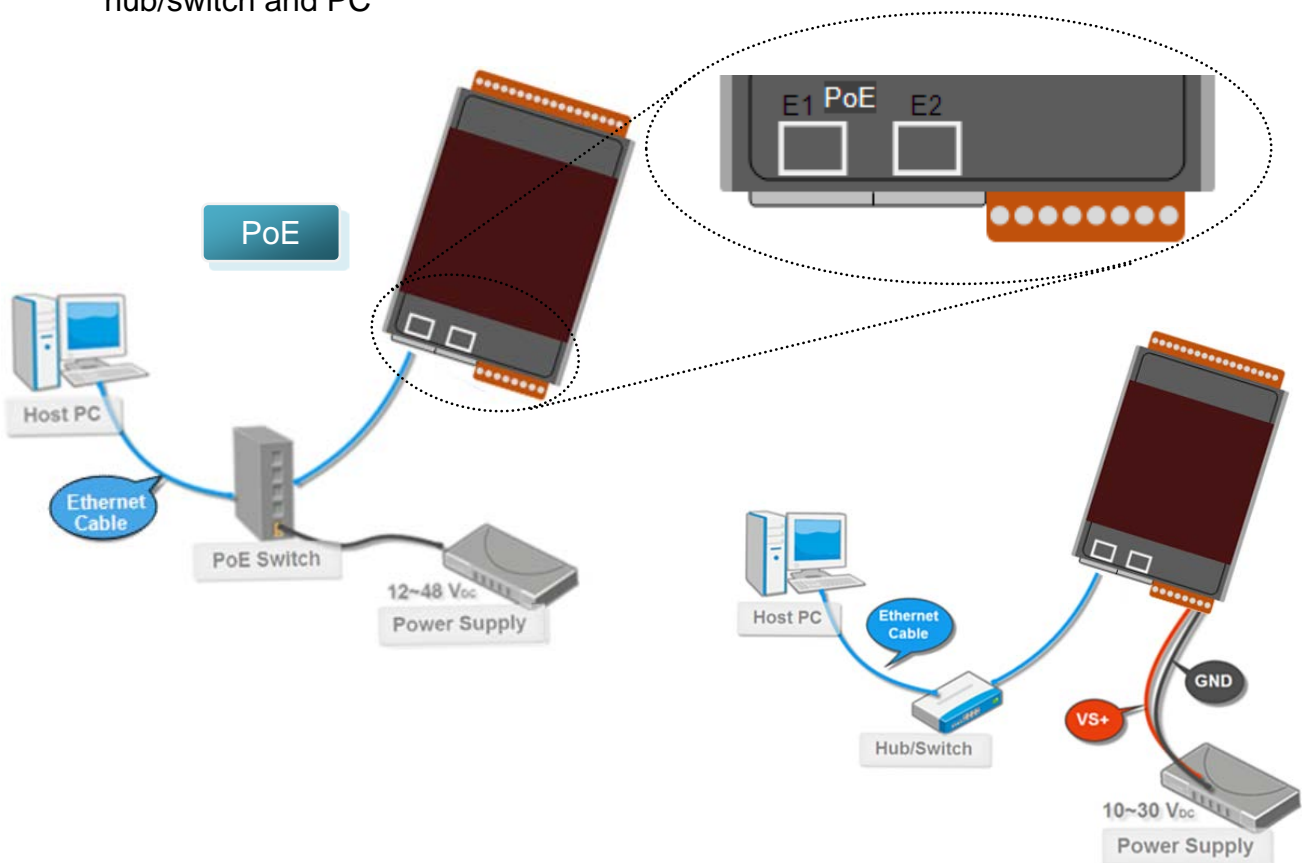
1 Configuring Boot Mode

Init Mode: After booting, ET-7259 will not run the default firmware and cannot surf the internet. Use this mode to update MiniOS7 image.

Normal Mode: After booting, ET-7259 will run the default firmware and can use all ET-7200 functions.

2 Connecting to Network, PC and Power

The ET-7259 is equipped with an RJ-45 Ethernet port for connection to an Ethernet hub/switch and PC



Installing the MiniOS7 Utility

Step 1 : Get the MiniOS7 Utility tool

The MiniOS7 Utility can be obtained from companion CD or our FTP site:

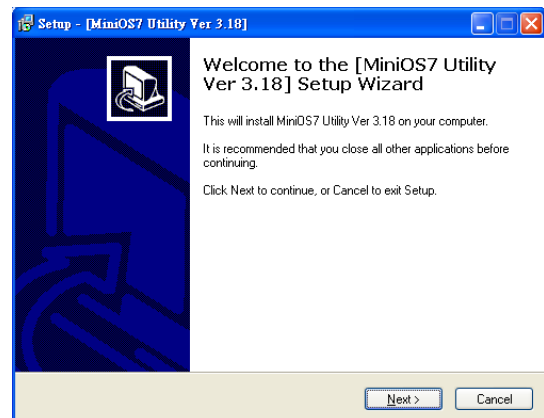
CD:\Napdos\minios7\utility\minios7_utility\

http://ftp.icpdas.com/pub/cd/6000cd/napdos/software/minios7_utility/

Step 2 : Follow the prompts to complete the installation



After the installation has been completed, there will be a new shortcut for MiniOS7 Utility on the desktop.



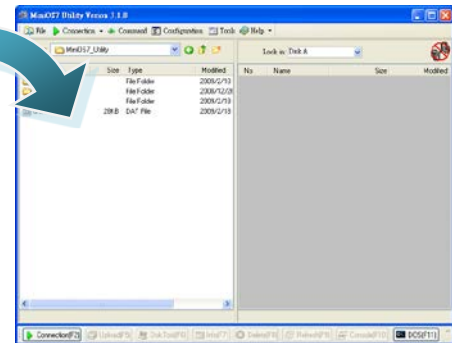
4 Using MiniOS7 Utility to Assign a New IP

The ET-7259 are Ethernet devices, which comes with a default IP address, therefore, you must first assign a new IP address to the ET-7259

Item	Default
IP Address	192.168.255.1
Subnet Mask	255.255.0.0
Gateway	192.168.0.1

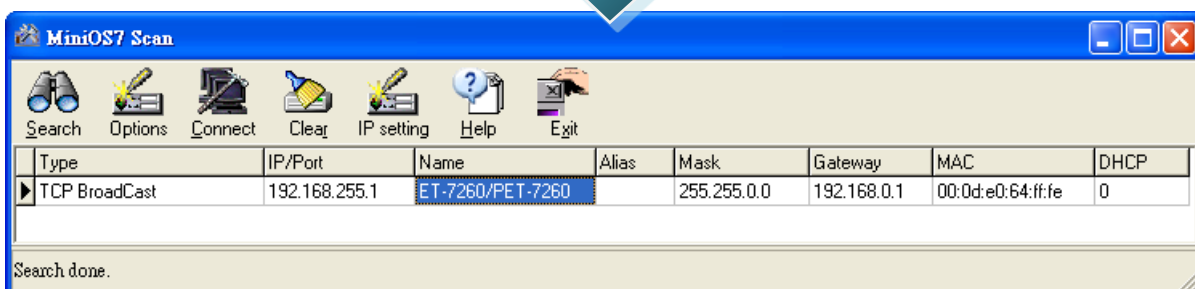
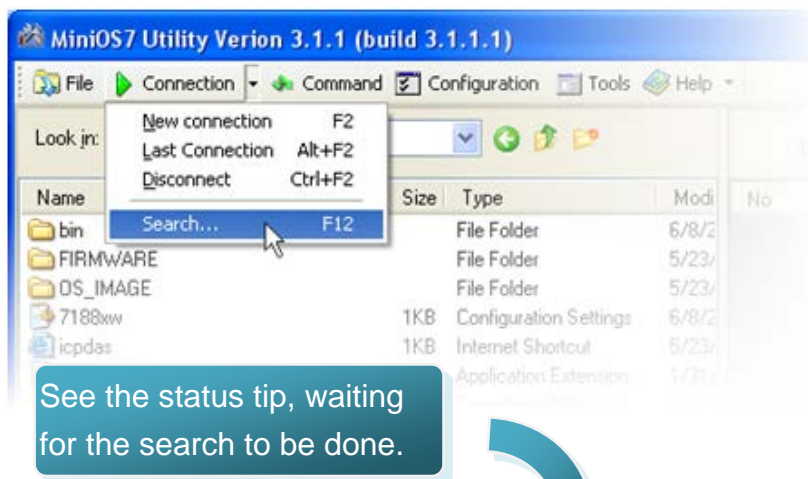
Step 1 : Run the MiniOS7 Utility

Double-click the MiniOS7 Utility shortcut on your desktop.

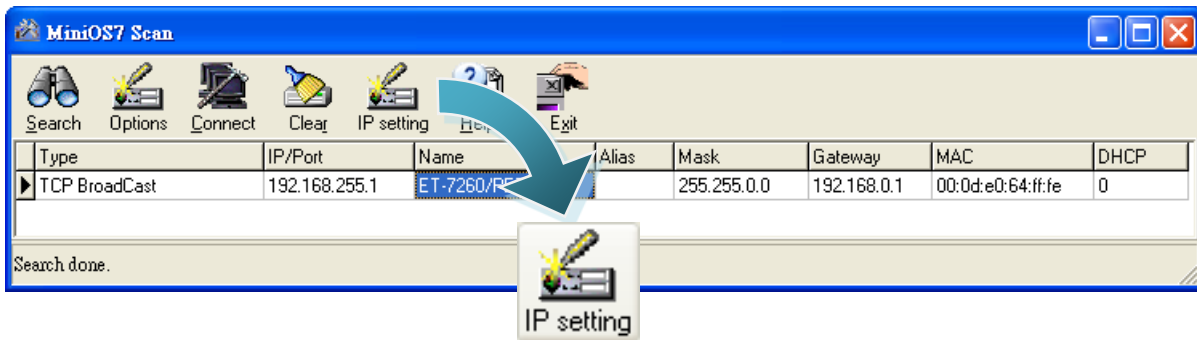


Step 2 : Press "F12" or choose "Search" from the "Connection" menu

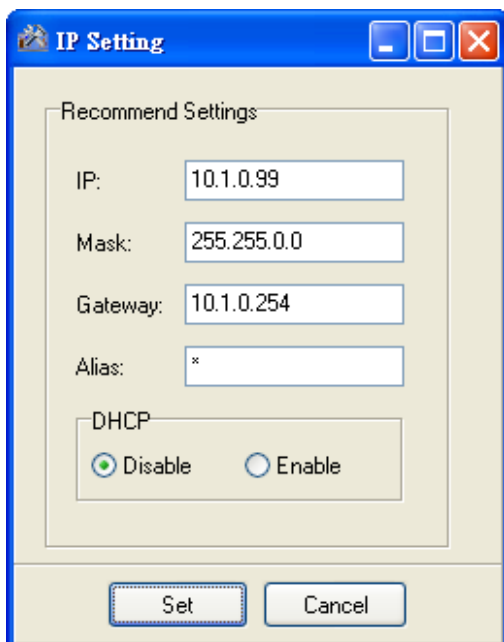
After pressing F12 or choosing Search from Connection menu, the MiniOS7 Scan dialog will appear, that will display a list of all MiniOS7 modules on your network.



Step 3 : Choose the module name and then choose "IP setting" from the toolbar

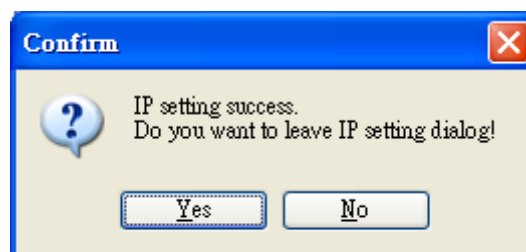


Step 4 : Assign a new IP address and then choose "Set" button



Step 5 : Choose "Yes" button

Press the Yes button in the Confirm dialog box to exit the procedure.



5 Enabling Adobe Flash Player in Your Browser

Your browser must support Adobe Flash Player and have it enabled in order to use the ET-7259 web site.

If you do not have it installed, please go to the following website and install it.



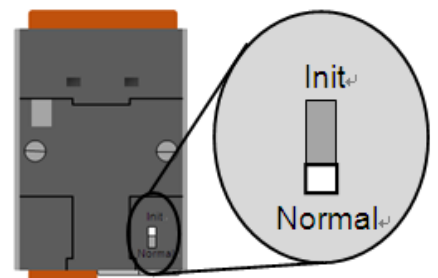
The Adobe Flash Player Download Center :
<http://get.adobe.com/flashplayer/>

6 Go to the ET-7259 Web Site to Check out Functions

The ET-7259 contains an advanced web configuration system that provides users with access ET-7259 applications through a standard web browser.

Step 1 : Start ET-7259

Make sure the switch placed in the “Normal” position.



Then reboot ET-7259.

Step 2 : Open a browser

Please use a standard internet browser to view the ET-7259 webpage, such as Mozilla Firefox or Internet Explorer...etc.

Step 3 : Type the URL address of ET-7259

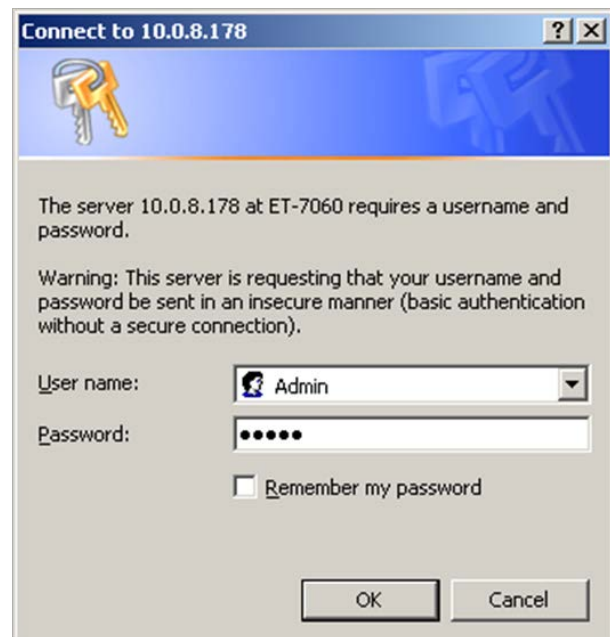
If you haven't changed the default IP address of the ET-7259, please refer to "4. Using MiniOS7 Utility to Assign a New IP" to configure it.

Step 4 : Fill out the User name and Password

After entering the IP address, the login dialog box will appear and prompt you to enter your User name and Password.

The factory default User name and Password are as follows:

Item	Default
User name	Admin
Password	Admin



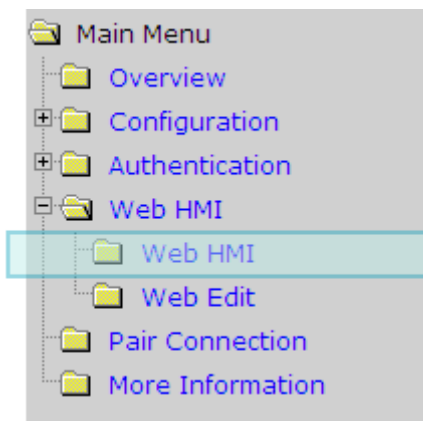


Step 5 : Welcome to ET-7259 web site

After logging into the ET-7000/ET-7200 web site, the welcome page will appear.



Step 6 : Check out the data acquisition services



Under the Main Menu, expand the Web HMI, and then select the Web HMI option to check the values of the data acquisition.

Channel	Register	Status	Counter	High Latched	Low Latched
DI0	10000	OFF	0	NO	YES
DI1	10001	OFF	0	NO	YES
DI2	10002	OFF	0	NO	YES
DI3	10003	OFF	0	NO	YES
DI4	10004	OFF	0	NO	YES
DI5	10005	OFF	0	NO	YES

* means that the function is presently disabled.

Channel	Register	Status	Action
DO0	00000	OFF	<input type="button" value="On"/> <input type="button" value="Off"/>
DO1	00001	OFF	<input type="button" value="On"/> <input type="button" value="Off"/>
DO2	00002	OFF	<input type="button" value="On"/> <input type="button" value="Off"/>
DO3	00003	OFF	<input type="button" value="On"/> <input type="button" value="Off"/>
DO4	00004	OFF	<input type="button" value="On"/> <input type="button" value="Off"/>
DO5	00005	OFF	<input type="button" value="On"/> <input type="button" value="Off"/>

Communication Status: Good



Reset to Factory Default Settings

Press the reset button for 5 seconds in order to reset the ET-7259 to factory default settings.

Item	Default
IP Address	192.168.255.1
Subnet Mask	255.255.0.0
Gateway	192.168.0.1
Login Username	Admin
Login Password	Admin

