

ET-7060

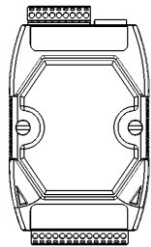
6-ch Relay, 6-ch Digital Input Data Acquisition Module

Quick Start Guide

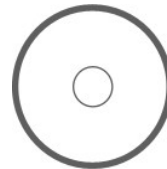
The ET-7060 provides 6 wet contact digital input channels and 6 form A electromechanical relays. It features optical isolation for 3000 VDC of transient overvoltage protection and doesn't have channel-to-channel isolation. Each input channel can be used as a 32-bit counter. The power-on value and safe value of relay are programmable. The most popular automation solution for Ethernet remote monitoring and control application. This Quick Start Guide will provide information needed to get started with ET-7060. Please also consult the User Manual for detailed information on the setup and use of ET-7060

What's In the Box?

In addition to this guide, the package includes the following items:



ET-7060 Module



Software Utility CD

Technical Support

- **ET-7060 Website**
http://www.icpdas-usa.com/et_7060.html
- **ICP DAS USA Website**
<http://www.icpdas-usa.com/>

Phone : 1-310-517-9888
Email: sales@icpdas-usa.com
Tech Support: tech@icpdas-usa.com



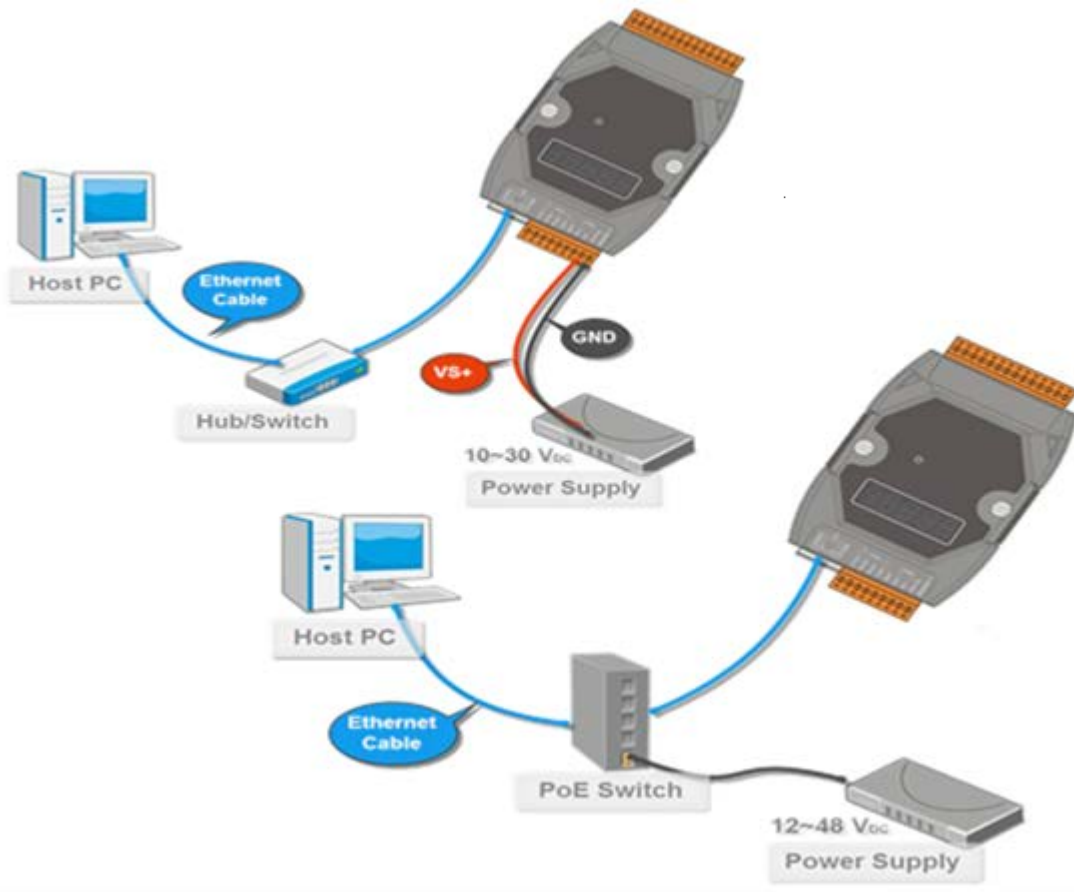
1 Configuring Boot Mode

Init mode: For configuration. After booting, ET-7060 will not run the default firmware and cannot surf the internet. Use this mode to update MiniOS7 image.

Normal mode: For normal working. After booting, ET-7060 will run the default firmware and can use all ET-7060 functions.

2 Connecting to Network, PC and Power

The ET-7060 is equipped with an RJ-45 Ethernet port for connection to an Ethernet hub/switch and PC.



3 Installing the MiniOS7 Utility

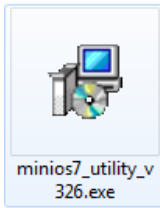
Step 1: Get the MiniOS7 Utility tool



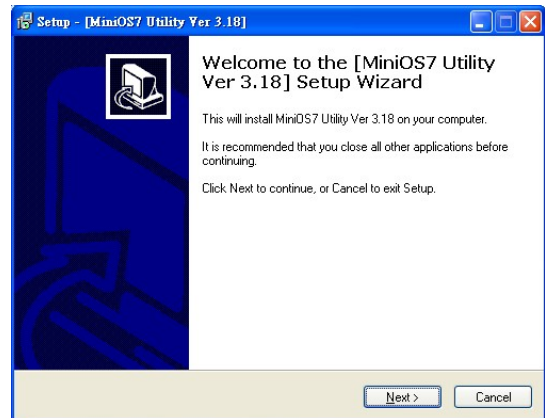
The MiniSO7 Utility can be obtained from companion CD or our site:

CD:\Napdos\minios7\utility\minios7_utility\
<http://www.icpdas-usa.com/minios7utility.html>

Step 2: Follow the prompts to complete the installation



After the installation has been completed, there will be a new short-cut for MiniOS7 Utility on the desktop.



4 Using MiniOS7 Utility to Assign a New IP

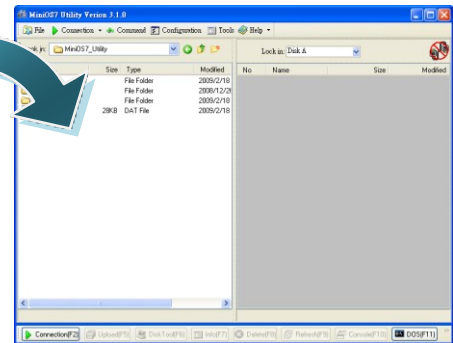
The ET-7060 are Ethernet devices, which comes with a default IP address, therefore, you must first assign a new IP address to the ET-7060.

The factory default IP settings are as follows:

Item	Default
IP Address	192.168.255.1
Subnet Mask	255.255.0.0
Gateway	192.168.0.1

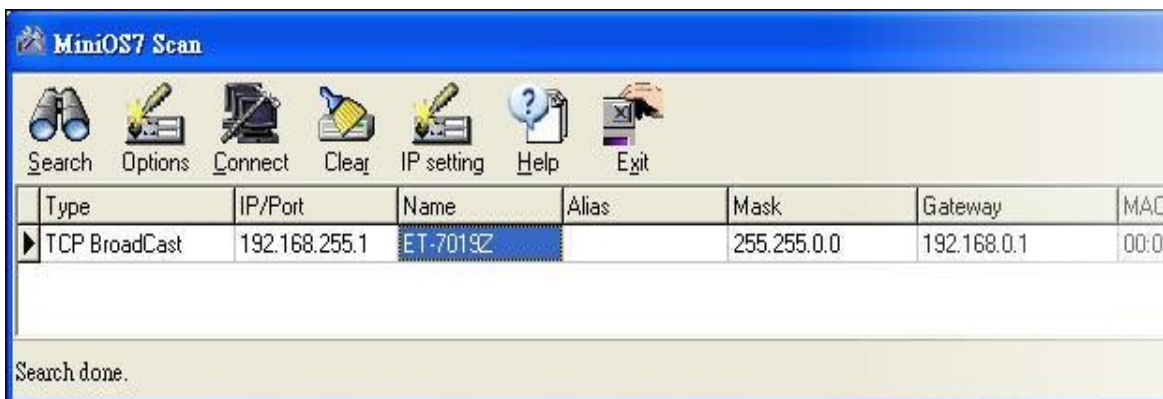
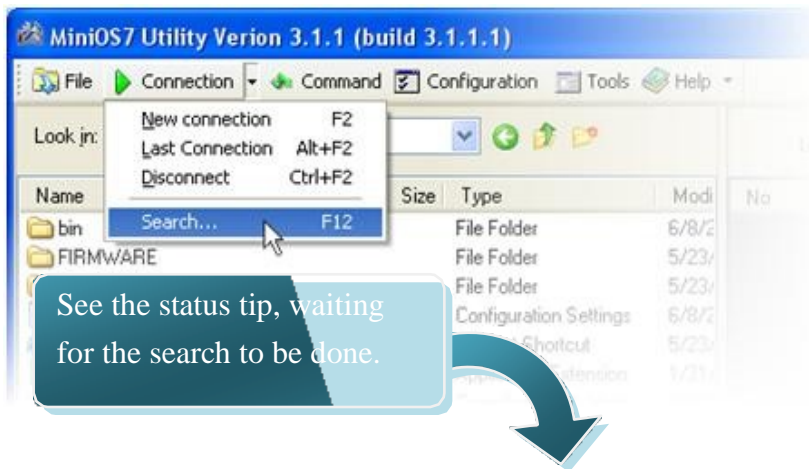
Step 1: Run the MiniOS7 Utility

Double-click the MiniOS7 Utility shortcut on your desktop.



Step 2: Press “F12” or choose “Search” from the “Connection” menu

After pressing F12 or choosing Search from Connection menu, the MiniOS7 Scan dialog will appear, that will display a list of all the MiniOS7 modules on your network.

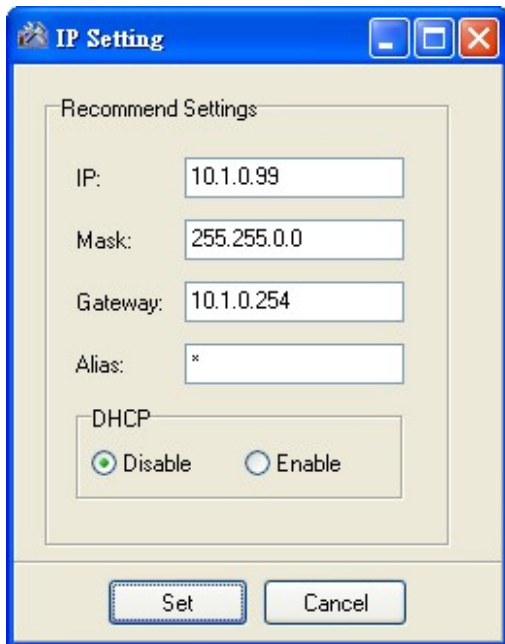


Step 3: Choose the module name and then choose “IP setting” from the toolbar

Choose the module name for fields in the list, and then choose IP setting from the toolbar.

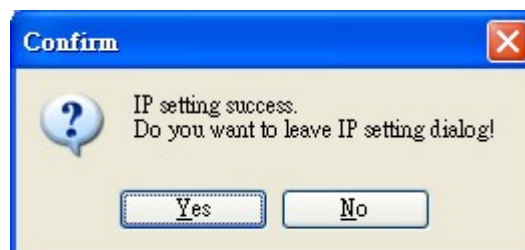


Step 4: Assign a new IP address and then choose “Set” button



Step 5: Choose “Yes” button

After completing the settings, press the Yes button in the Confirm dialog box to exit the procedure.



5 Enabling Adobe Flash Player in Your Brower

Your browser must support Adobe Flash Player and have it enabled in order to use the ET-7060 web site.

If you do not have it installed, please go to the following website and install it.



The Adobe Flash Player Download Center:

<http://get.adobe.com/flashplayer/>

6 Go to the ET-7060 Web Site to Check out Functions

The ET-7060 contains an advanced web configuration system that provides users with access ET-7060 applications through a standard web browser.

Step 1: Start ET-7060

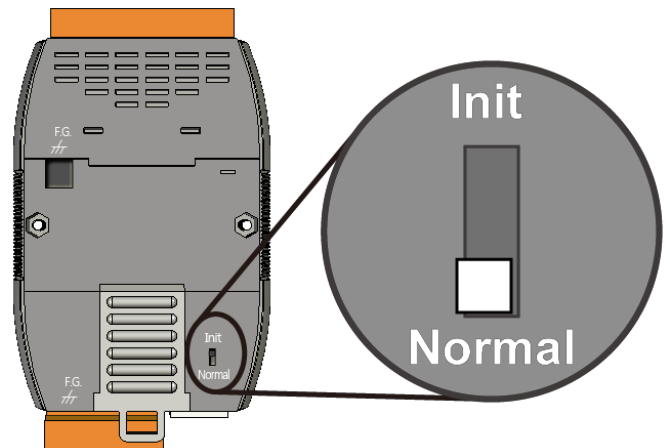
Make sure the switch placed in the “Normal” position.
Then reboot ET-7060

Step 2: Open a browser

Please use a standard internet browser to view the ET-7060 webpage, such as Mozilla Firefox or Internet Explorer...etc.

If you haven't changed the default IP address of the ET-7060, please refer to “4. Using MiniOS7 Utility to Assign a New IP” to configure it.

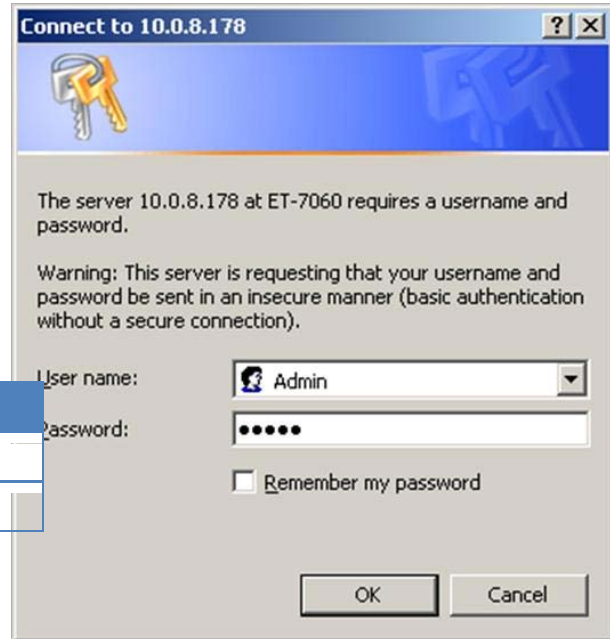
Step 4: Fill out the User name and Password



After entering the IP address, the login dialog box will appear and prompt you to enter your username and password.

The factory default user name and password are as follows (Case sensitive) :

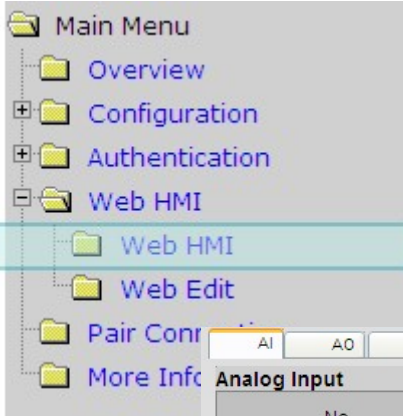
Item	Default
User name	Admin
Password	Admin



Step 5: Welcome to ET-7060 web site

After logging into the ET-7060 web site, the welcome page will appear.





Under the Main Menu, expand the Web HMI, and then select the Web HMI option to check the values of the data acquisition.

AI AO DI DO AI Average value

Analog Input

No	Register	Value	
		Hex Format	Floating Format
AI0	30000	0000	0.000
AI1	30001	0000	0.000
AI2	30002	0000	0.000
AI3	30003	0000	0.000
AI4	30004	0000	0.000
AI5	30005	0000	0.000

High/Low Latched Value for Analog Inputs

No	Latched High			Latched Low		
	Register	Value		Register	Value	
		Hex Format	Floating Format		Hex Format	Floating Format
AI0	30236	0001	0.000	30268	FFFF	-0.000
AI1	30237	0000	0.000	30269	FFFF	-0.000
AI2	30238	0002	0.000	30270	FFFF	-0.000
AI3	30239	0000	0.000	30271	FFFE	-0.000
AI4	30240	0002	0.000	30272	FFFF	-0.000
AI5	30241	0000	0.000	30273	FFFF	-0.000