

## FAQs

**Q:** Do you have any sort of M2M (Machine to Machine) embedded controller with a cellular transceiver?

**A:** Yes. Our NEW [G-4500](#) can monitor industrial equipment, send live data and provide real time status. It is an M2M embedded controller with a cellular transceiver. It features a GPRS/GSM module, Ethernet Interface, Optional GPS module, 3 DI, 3DO, 8 AI, 2 RS-232 and 1 RS-485 port. [G-4500](#) can be utilized in vending machines, home security systems, remote machine monitoring, POS systems, power measurement, vehicle management, maritime, and taxi dispatch systems. [Click here](#) for more information.

## Applications

[Click here](#) to read our comprehensive list of application stories in video and .PDF formats.

[Click Here](#) to share your story with ICP DAS USA! We would love to hear about your product implementations.

## Buy Online

# DeviceNet, ProfiBus & CANBus Converters

ICP DAS offers a wide selection of industrial data communication and conversion devices. Here are some of our DeviceNet, Profibus and CANbus products that convert data to Ethernet, Modbus and DCON protocols



**I-7243D: DeviceNet Master / Modbus TCP Server Gateway** is a solution that provides a communication protocol transfers the DeviceNet and Modbus/TCP to Ethernet.



**I-7550: PROFIBUS to RS-232/422/485 Converter** allows RS-232/422/485 devices onto PROFIBUS networks.



**I-7242D: DeviceNet / Modbus RTU Gateway** allows a master located on a DeviceNet network to communicate with the slaves on a Modbus RTU network



**GW-7552: PROFIBUS/Modbus Gateway** allows the PROFIBUS master to access the Modbus devices.



**PISO-DNM100D/T: 1 Port Intelligent DeviceNet Master Communication Board** with DeviceNet Firmware Inside is a DeviceNet master device on DeviceNet networks



**I-7232D: CANopen / Modbus Gateway** allows a CANopen master to access the Modbus slave devices on Modbus RTU networks.



**I-7241D: DeviceNet / DCON Gateway** offers the communication gateway between DeviceNet and DCON protocol.



**I-7540D: CAN Ethernet Gateway** enables CAN networks to be coupled together over the Internet/Ethernet,



**I-7231D: CANopen / DCON Gateway** convert the CANopen electric signals and messages to DCON protocol.



**uPAC-7186EXD-CAN: CAN bus series Programmable Automation Controller** is an are economic and convenient solution for CAN applications.

### We have extended our Video Application Contest!

The First prize winner will receive **\$300.00**, The Second prize winner will receive **\$200.00**. Third prize is **\$100.00**.

## Buy Online



All orders placed before 2pm will ship same day

## FREE SHIPPING

on online orders over \$200



## Online Purchases Can Ship to Canada



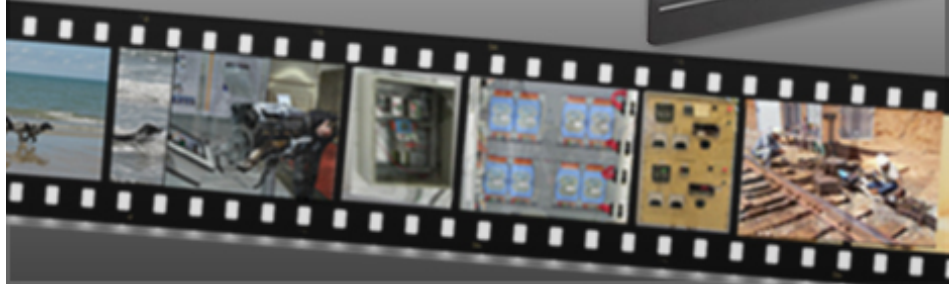
# VIDEO CONTEST

**To Enter:** Make a video up to 2 minutes in length describing your application.

### What Should be in Your Video Entry:

- Explain** what your application does.
- Describe** which ICP DAS products you're using
- Explain** why you chose our products
- Discuss** the benefits of using our products

First Prize: \$300  
Second Prize: \$200  
Third Prize: \$100



Winner will be announced by **12/29/08**. *ALL* entries will get a reward. \*\*  
ICP DAS USA reserves the right to post submissions on [www.icpdas-usa.com](http://www.icpdas-usa.com) web site.  
All entries in contest will receive an award for entering.

**To Enter:** Make a video up to 2 minutes in length describing your application.

### What Should be in Your Video Entry:

1. Explain what your application does.
2. Describe which ICP DAS products you are using in the application
3. Explain why you chose our products
4. Discuss the benefits of using our products in your application

If you have any questions, please email me at: [marias@icpdas-usa.com](mailto:marias@icpdas-usa.com)

310-517-9888  
[sales@icpdas-usa.com](mailto:sales@icpdas-usa.com)

[www.icpdas-usa.com](http://www.icpdas-usa.com)

[Site Map](#)

[Policies](#)

[News](#)

[Press](#)

[Unsubscribe](#)