



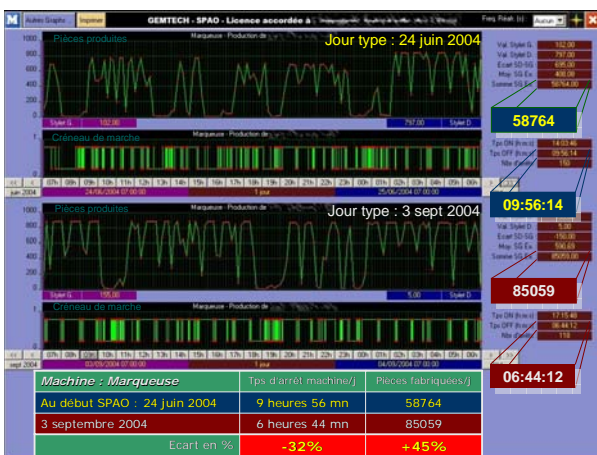
### Real time control & data acquisition system for public utilities



ICP DAS USA recently had an opportunity to assist Gemtech (an international solutions provider), with a very exciting application, for the public works sector! With the constant need for precision resource management, it is no surprise that more foreign governments are looking towards large-scale automation solutions in hopes of increasing efficiency, and lowering costs. With the aforementioned scenario in mind, Gemtech approached ICP DAS USA with a specific energy-monitoring project for the Moroccan government, which required a modular and cost effective solution, for wide scale implementation.

The project set forth by Gemtech’s customer, mandated that the hardware be of an open and modular architecture, and capable of being implemented in a multitude of inhospitable work environments. Taking these factors into consideration, ICP DAS USA and Gemtech recommended a comprehensive solution, based around the ICP DAS I-7188 and I-7000 modules. The I-7188 series embedded controllers would provide the foundation for a complex data-monitoring program, made available via a standardized web browser. Tied together on a local area network, the I-7188 controllers would provide “drops” or access points for the various I-7000 RS-485 based I/O to connect to. Aside from providing local access points, the I-7188 controllers allowed for users to locally monitor both incoming and system wide data, from an ICP DAS programmable touch screen. The secondary aspect of the application revolved extensively around a wide array of ICP DAS I-7000 modular I/O. With an extensive offering of both analog and digital I/O configurations, the I-7000 RS-485 based I/O line, provided the ideal solution for the customer’s diversified needs.

By implementing their ICP DAS based solution, Gemtech’s customer benefited from a 44% increase in productivity, coupled with a 30% decrease in downtime! Another added benefit of Gemtech’s application is the accessibility of the system from any point in the world, via secure web viewing.



To the right, is a screen shot from one of the local terminal interfaces, within the facility. With their newfound data logging and HMI capabilities, Gemtech’s customer will surely continue to find new and innovative ways to increase productivity and efficiency, while significantly lowering costs.