



Quick Start Guide

Become familiar with your ZB-2570/2571/2570P/2571P in minutes!

1. Quick Start for the ZigBee Converter

1. Before configuring the ZigBee converter, adjust the switch to the **ZBSET** position then switch on the power (**Figure 1**). After configuration is complete, adjust the switch to the **RUN** position then switch on the power (**Figure 2**). Be sure to turn the power off before adjusting the switch.



Figure 1

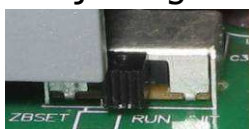
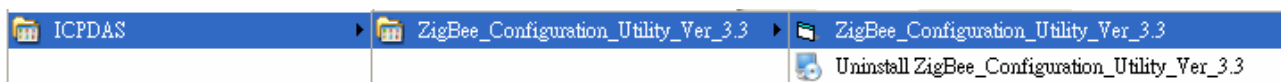


Figure 2

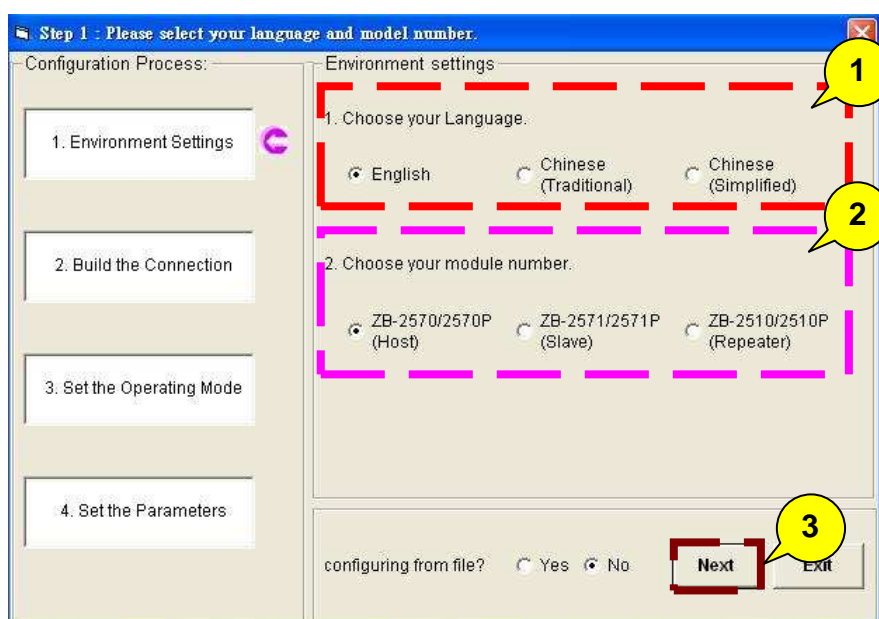
2. After installing the ZigBee_Configuration_Utility_Ver_3.3, the executable file can be found at:
Start\ProgramFiles\ICPDAS\ZigBee_Configuration_Utility_Ver_3.3\ZigBee_Configuration_Utility_Ver_3.3.exe



3. Connect the ZigBee converter using one of the hardware interfaces (RS-232, RS-485 or Ethernet; the default configuration interface is RS-232) and execute the utility.
4. When the following screen is displayed:

In the *Environment Settings* section:

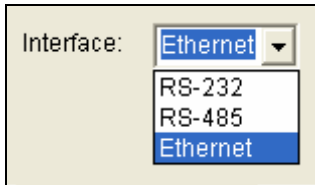
1. Choose the language.
2. Choose the module (ZB-2570/2571/2570P/2571P).
3. Click the **Next** button.



5. When the following screen is displayed:

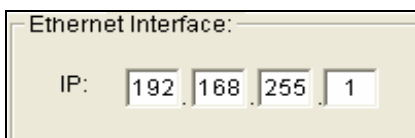
In the *Build the Connection* section:

1. Select the configuration interface of your ZigBee converter module.

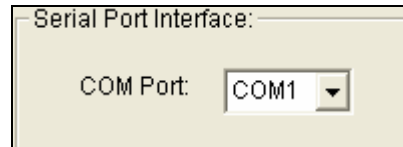


Interface: Ethernet
RS-232
RS-485
Ethernet

2. Enter the interface parameters (COM Port number or IP)

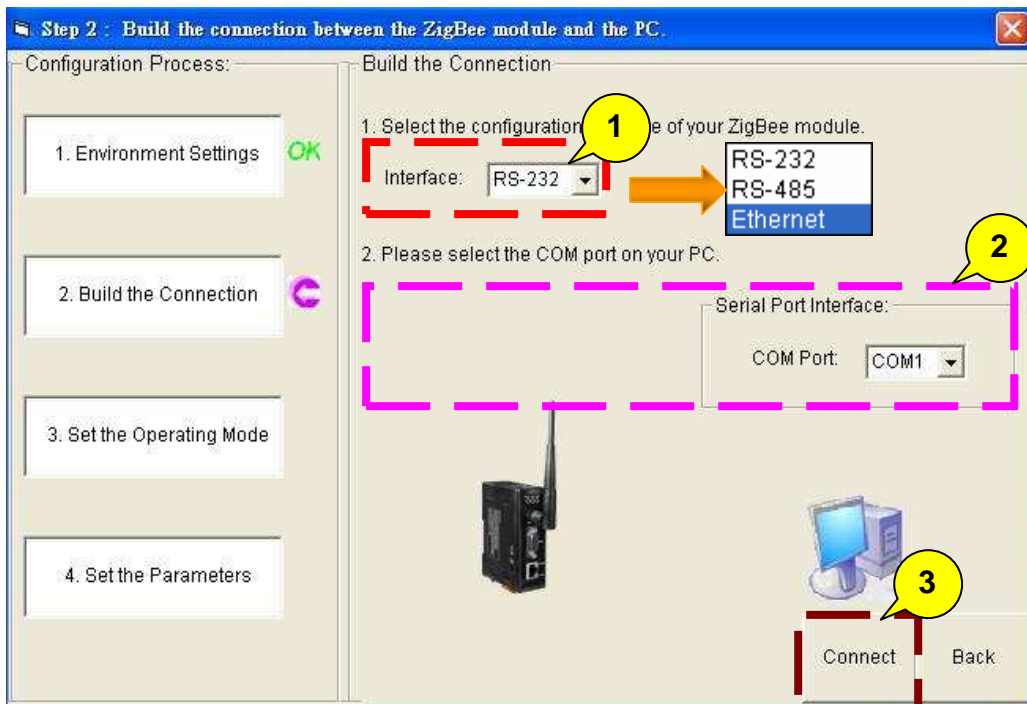


Ethernet Interface:
IP: 192 168 255 1



Serial Port Interface:
COM Port: COM1

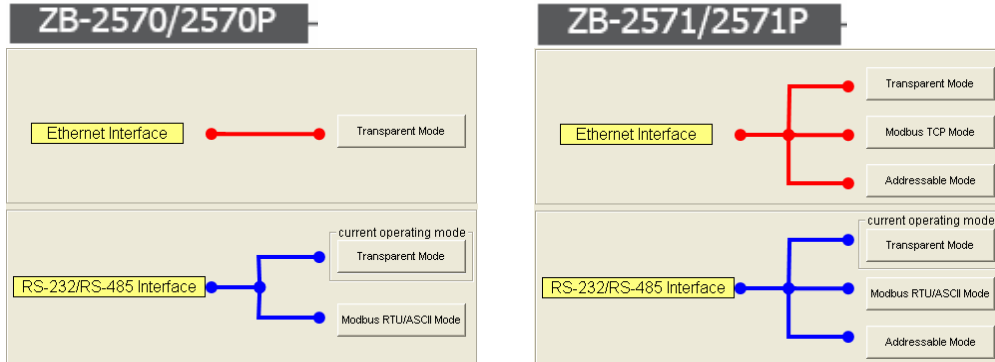
3. Click the **Connect** button.



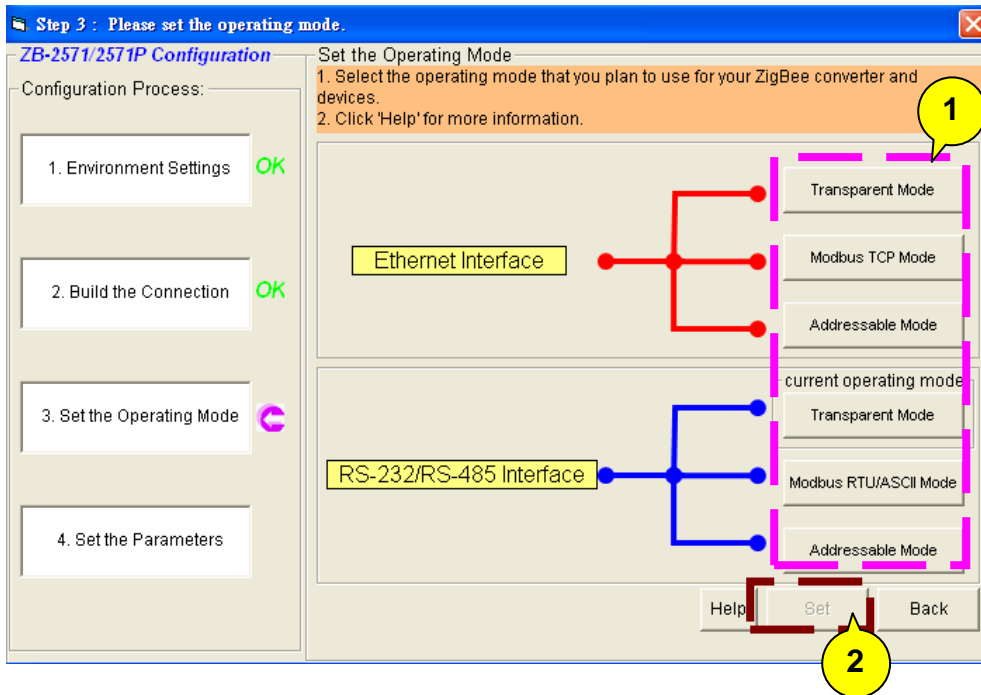
6. When the following screen is displayed:

In the *Set the Operating Mode* section:

1. Select the operating mode that you plan to use for your ZigBee converter and devices.



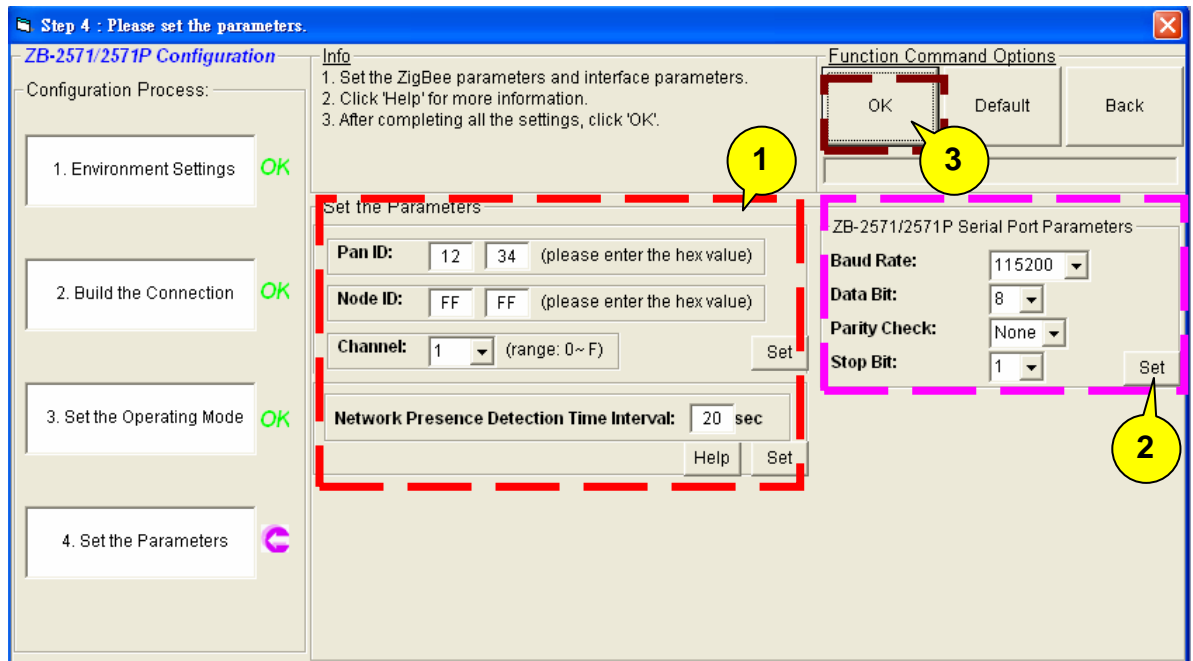
2. Click the **Set** button.



7. When the following screen is displayed:

In the *Set the Parameters* section:

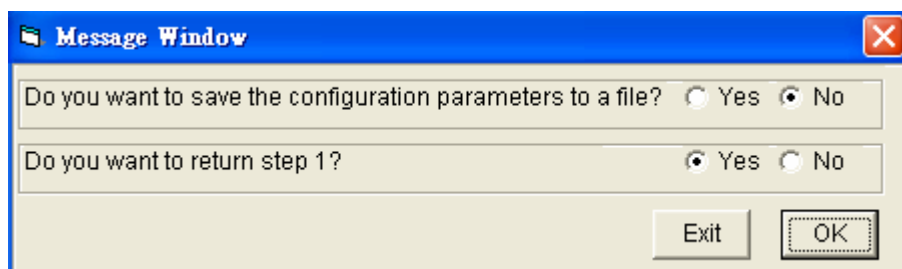
1. Set the ZigBee parameters. After entering the ZigBee parameter settings, click the **Set** button.
2. Set the interface parameters, after finishing the interface parameter settings, click the **Set** button.
3. Click the **OK** button.



When the following alert is displayed, it means that the configuration has been successful. Click the **OK** button to continue the configuration.

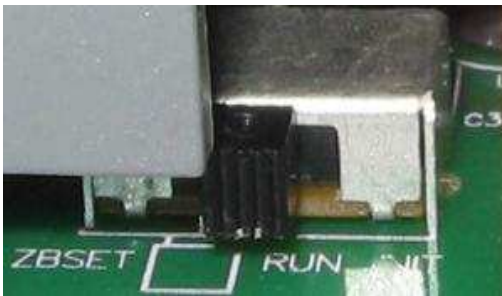


When the following alert is displayed, it means that configuration is finished. Click the **OK** button to exit the configuration.

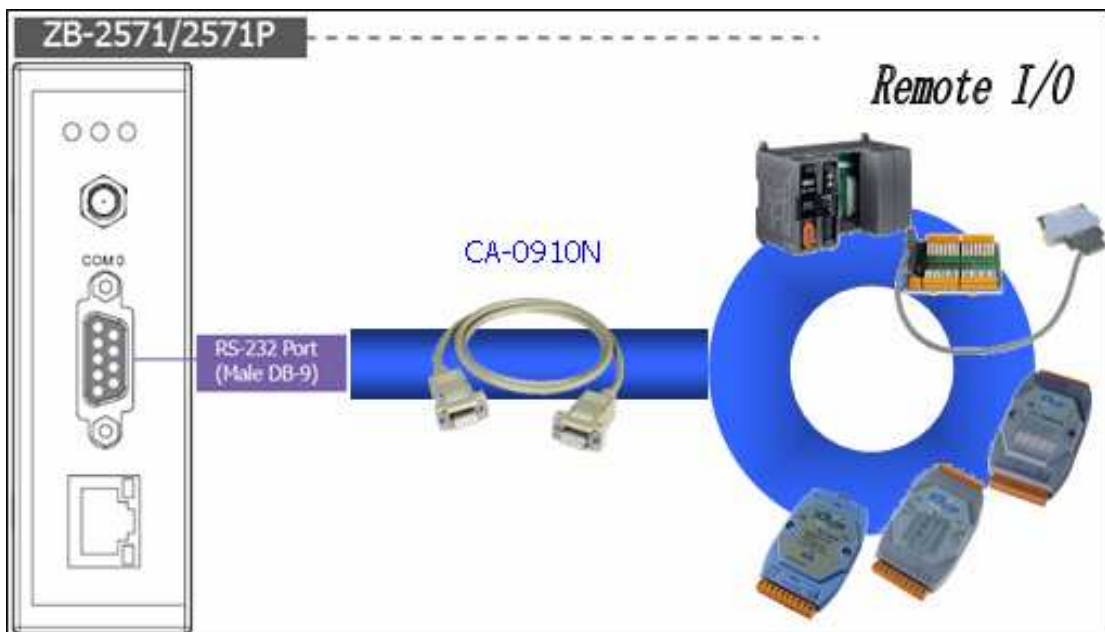
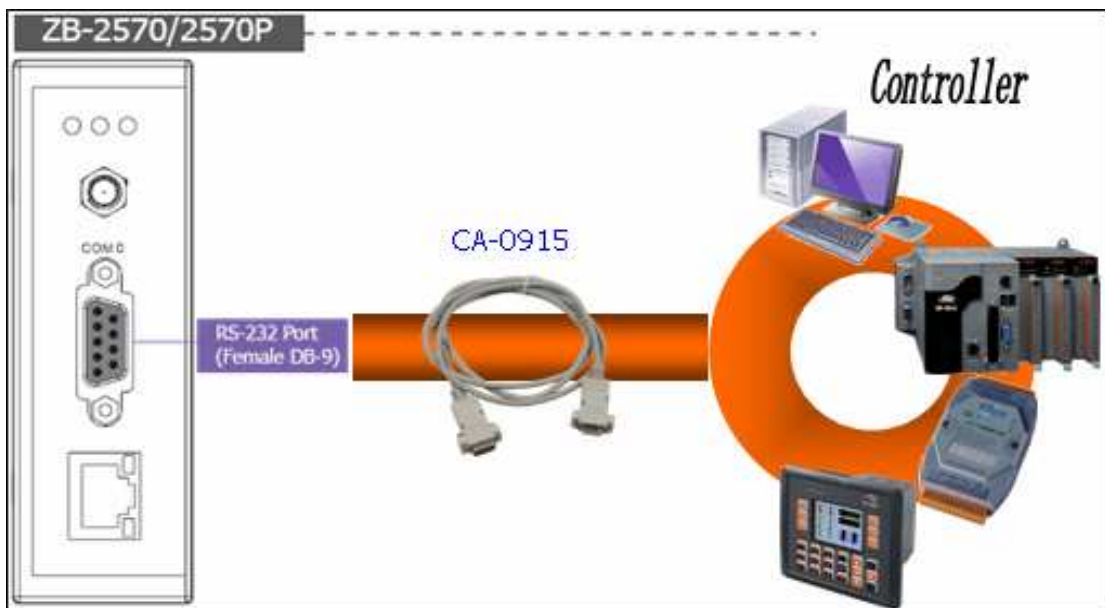


2. Installing the Hardware

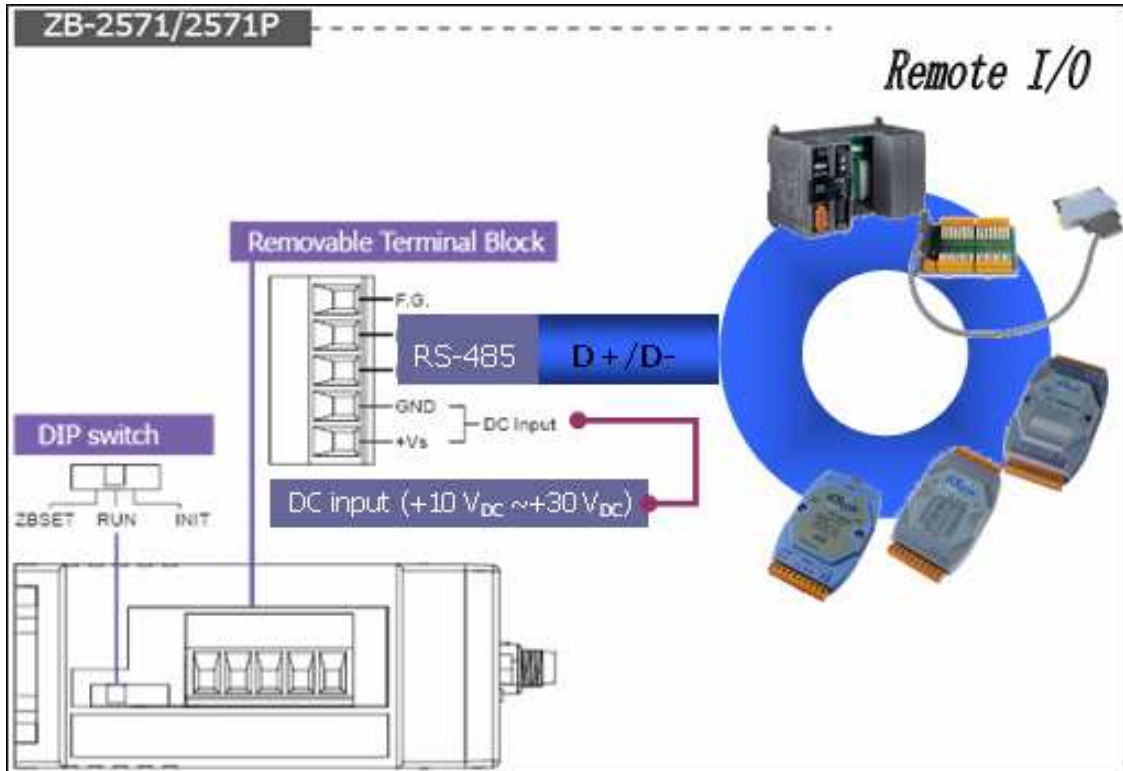
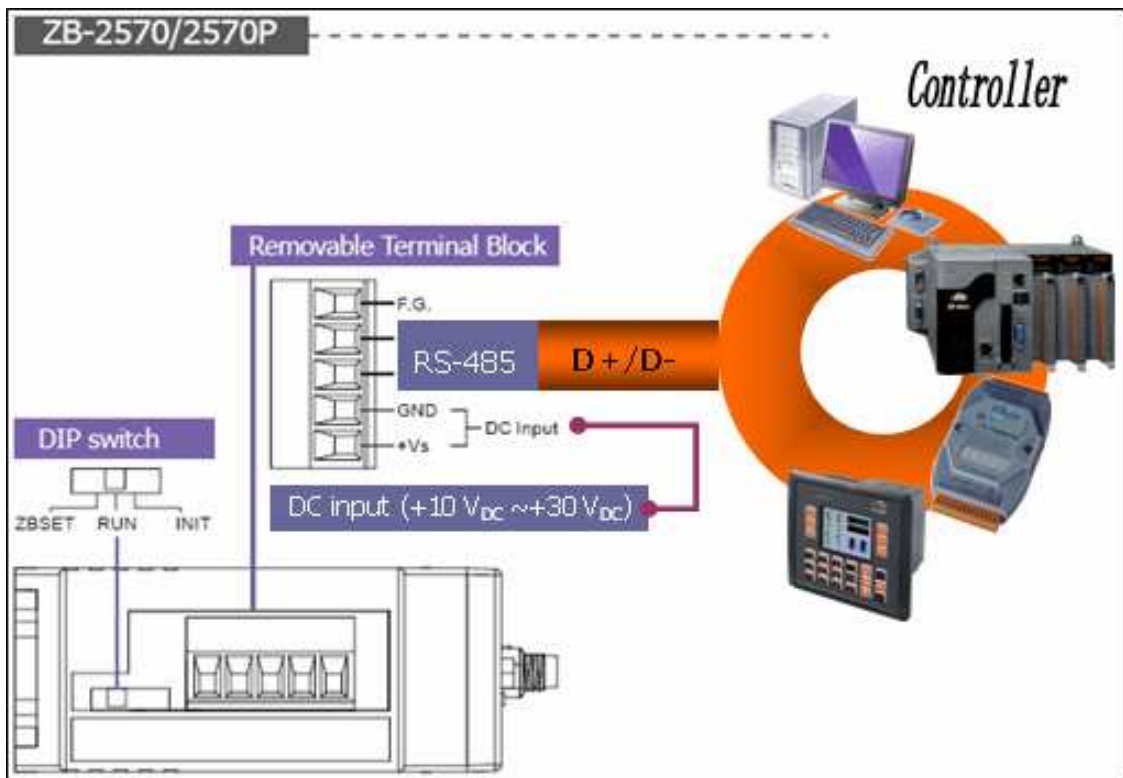
1. Adjust the switch to the **RUN** position then power on the module.



2. Serial Port - RS-232



3. Serial Port - RS-485



4. Ethernet – RJ-45

