



---

# **ZB-2550(P)/ZB-2551(P)**

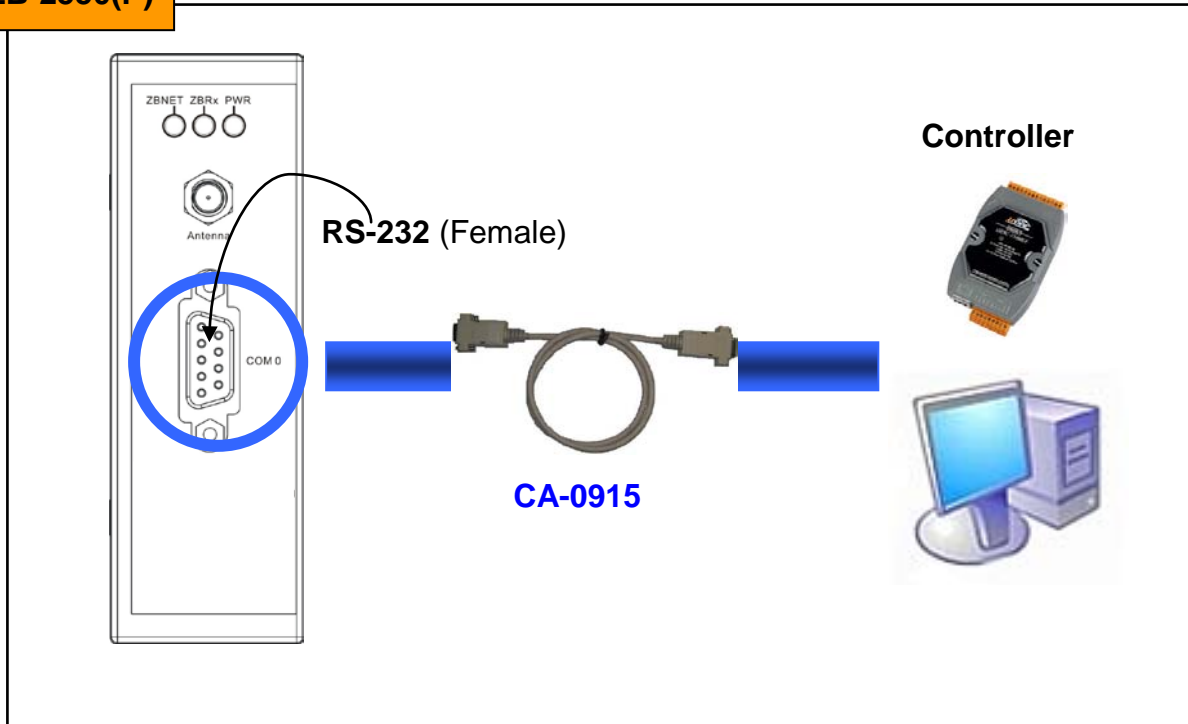
## **Quick Start Guide**

Version 1.1, 2009/05/12

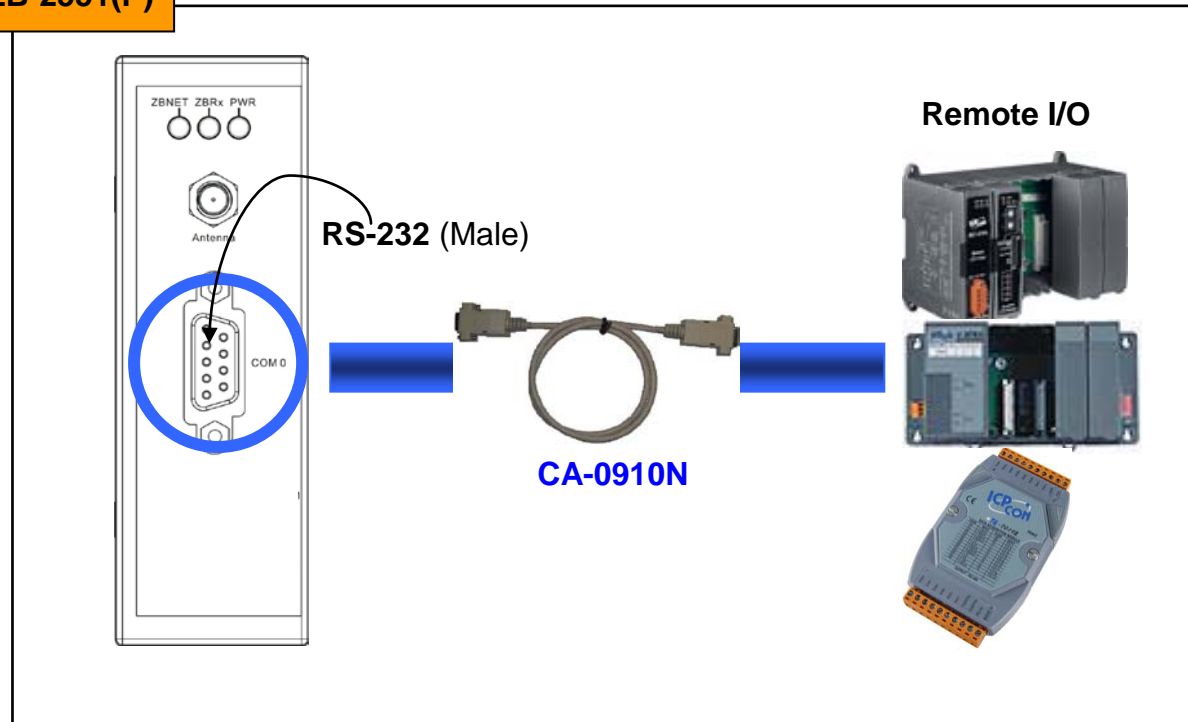
# 1. Installing the Hardware

## Serial Port - RS-232

### ZB-2550(P)

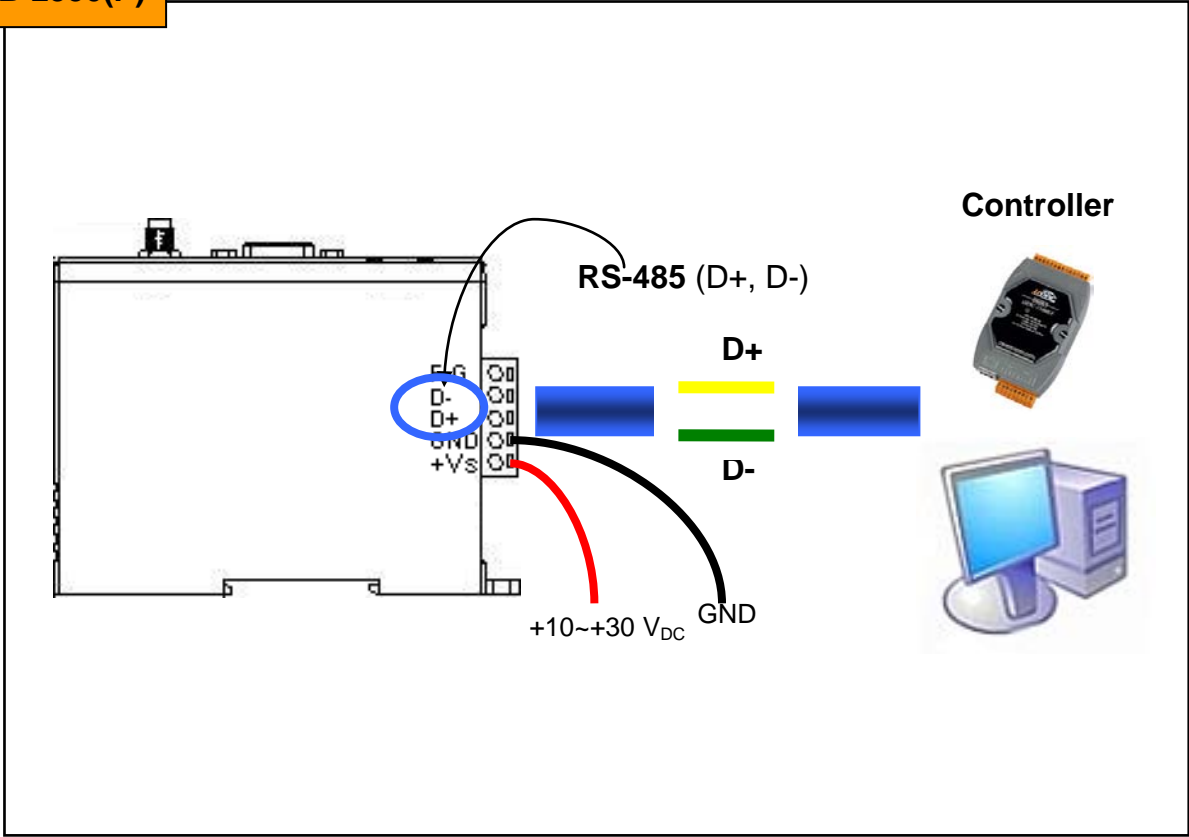


### ZB-2551(P)

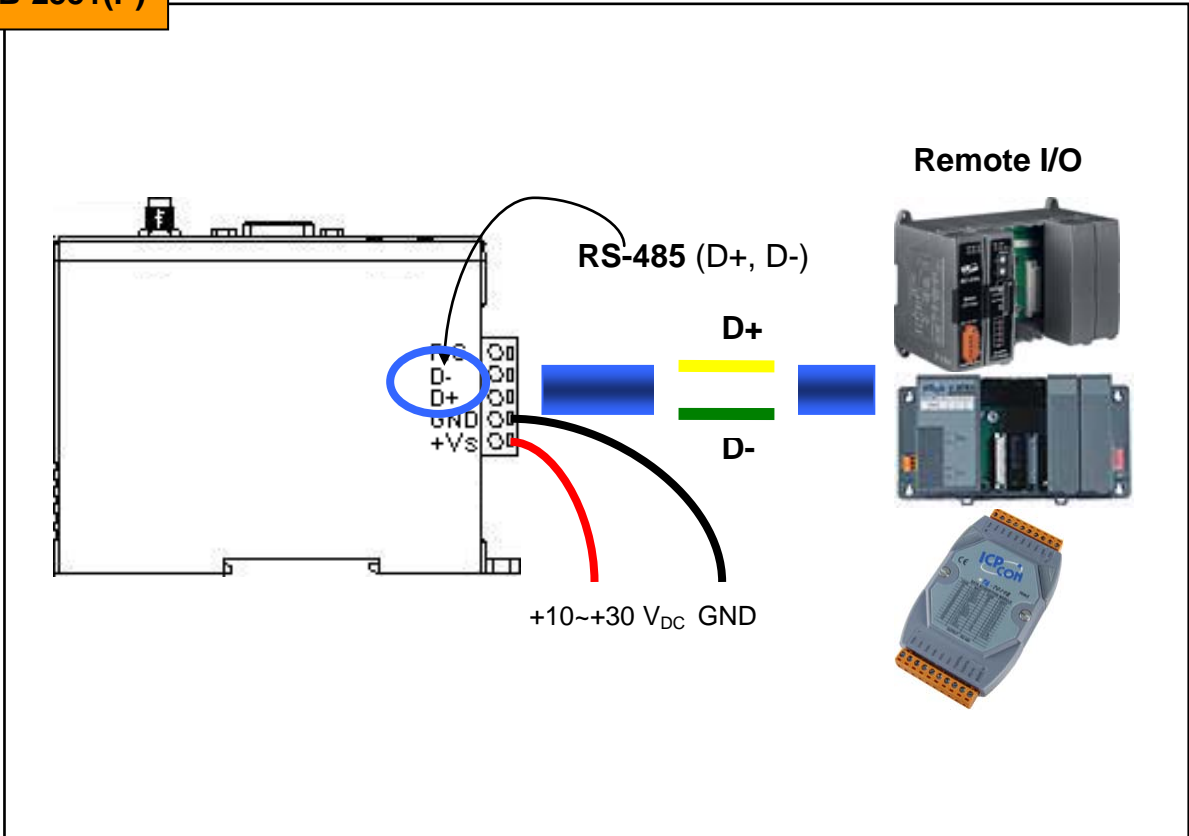


# Serial Port - RS-485

## ZB-2550(P)

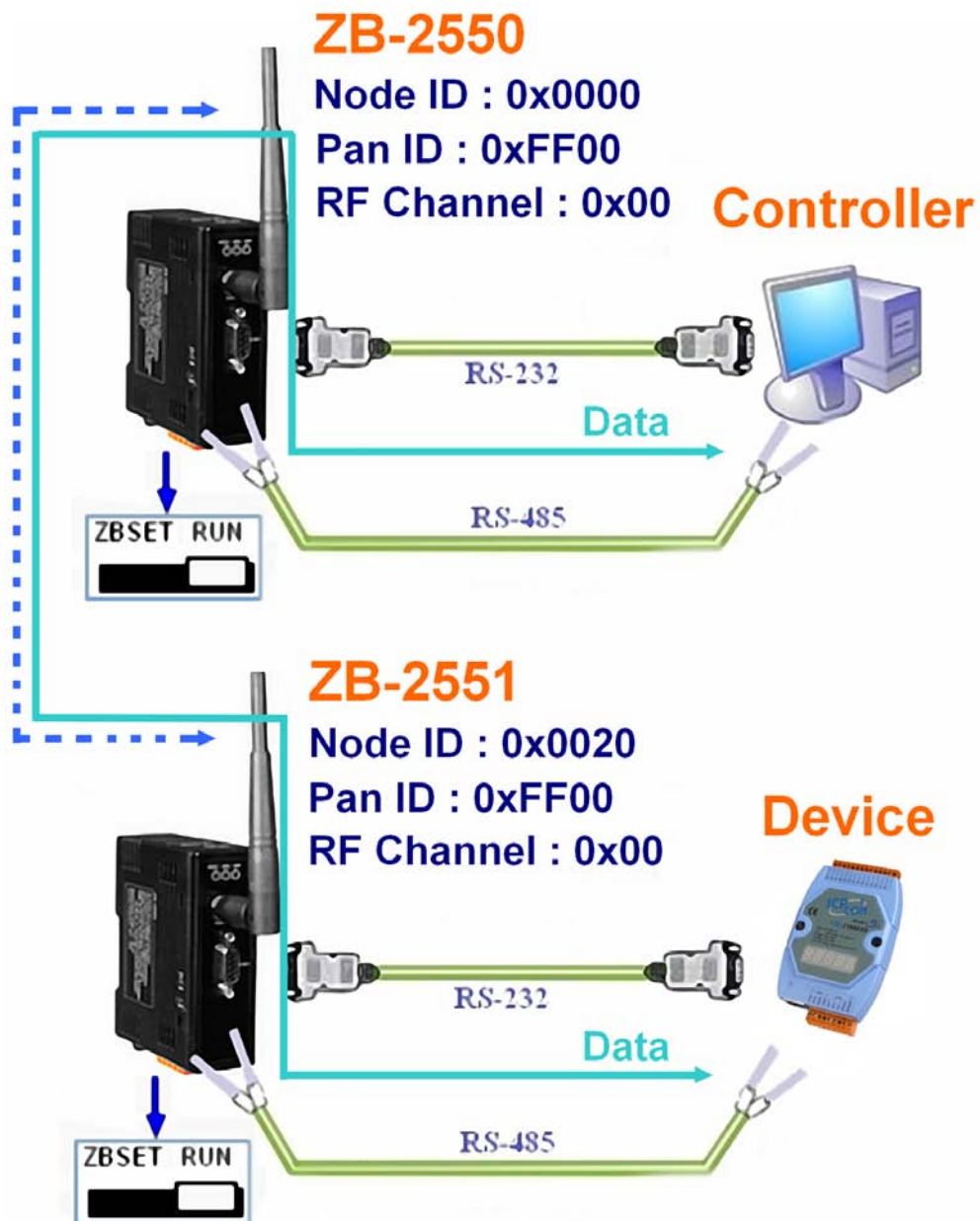


## ZB-2551(P)



## 2. Quick Start for the ZB-2550(P)/ZB-2551(P)

Adjust the switch to the **RUN** position then re-boot (power off/on) the module. Leverage the power of your data. Make it work for you.



### 3. Configuration Tool

1. Download the file from:

FTP path:

[http://ftp.icpdas.com/pub/cd/usbcd/napdos/zigbee/zigbee\\_converter/zb\\_255x](http://ftp.icpdas.com/pub/cd/usbcd/napdos/zigbee/zigbee_converter/zb_255x)

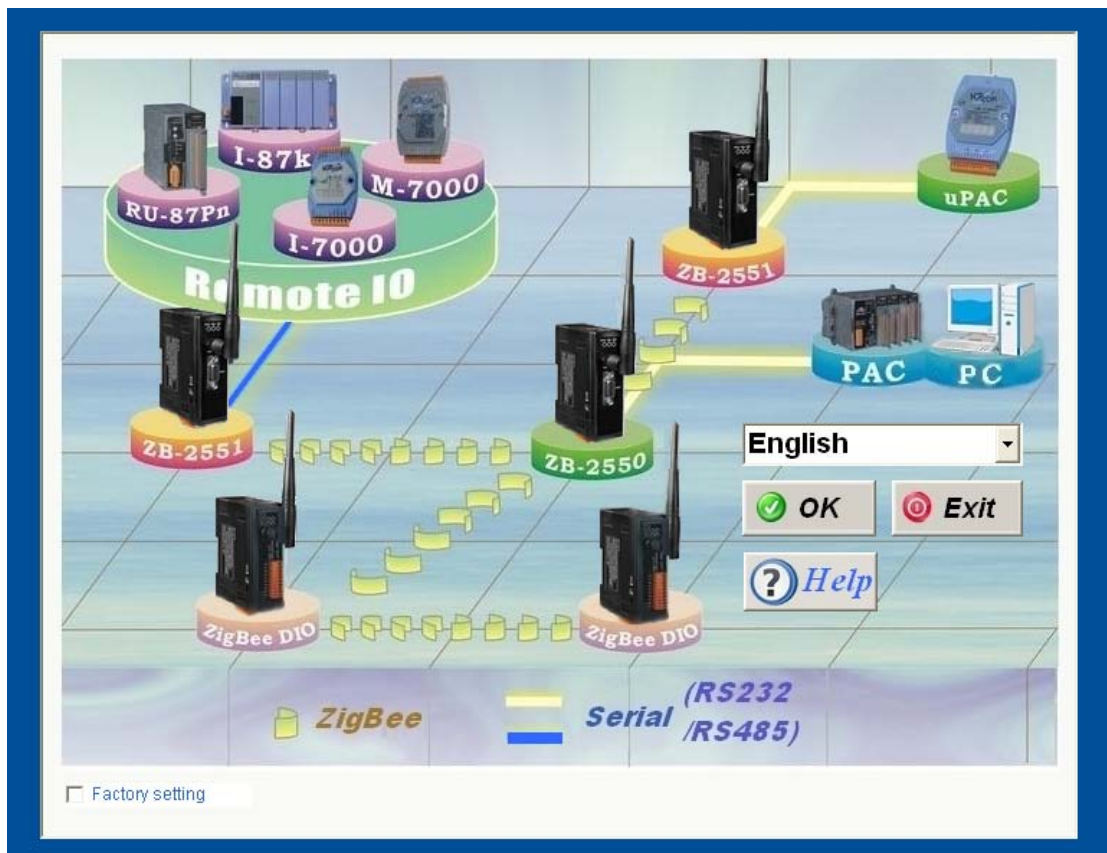
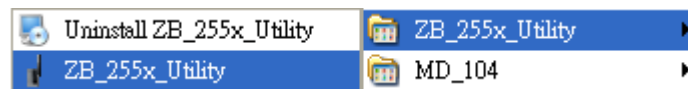
CD path:

[CD:\Napdos\ZigBee\ZigBee\\_Converter\ZB\\_255x](CD:\Napdos\ZigBee\ZigBee_Converter\ZB_255x)

2. Uncompress the ZIP file and double click the **ZB\_2550(P)\_51(P)\_Utility\_vxxx\_setup.exe** to install **ZigBee 2550(P)/51(P) Utility**.

After installing the ZB-255x Utility, the executable file can be found at:

[Start\Program Files\ICPDAS\ZB\\_255x\\_UTILITY\ICPDAS\ZB\\_255x\\_UTILITY](Start\Program Files\ICPDAS\ZB_255x_UTILITY\ICPDAS\ZB_255x_UTILITY)



## Zigbee Addressing and Identifiers

- **Node ID (0x0000~0xFFFF)**

A 16-bit address that describes a Zigbee node  
ZB-2570(P)/ZB-2550(P) always uses 0x0000  
ZB-2571(P)/ZB-2551(P) ranges 0x0001~0xFFFF  
ZB-DIO/ZB-AIO ranges 0x0001~0x001F  
Resolve by stack in case of collision  
Included in all message to identify node
- **Pan ID (0x0000~0xFFFF)**

A 16-bit ID to identify the network  
Included in every packet  
A “logical” way to separate Zigbee networks running on same RF channel  
Defined during network formation by ZB-2570(P)/ZB-2550(P)  
ZB-DIO/ZB-AIO always uses 0xFF00 or 0xFF01
- **RF Channel**

1 of 16 RF channels  
Defined during network formation by ZB-2570(P)/ZB-2550(P)

**Note :** A Work Network - Running on the same **Pan ID** and **RF Channel**

- **Network Survival Detecting Time**

ZB-2551(P) will connect with Parent (ZB-2550(P)) periodically to confirm the survival of network. If it detects unsuccessfully, and it process initialize network again to find a new parent.

## 4. Appendix

- i. Setting Tool download website:  
[http://ftp.icpdas.com/pub/cd/usbcd/napdos/zigbee/zigbee\\_converter/zb\\_255x](http://ftp.icpdas.com/pub/cd/usbcd/napdos/zigbee/zigbee_converter/zb_255x)
- ii. Setting Tool download CD path:  
[CD:\Napdos\ZigBee\ZigBee\\_Converter\ZB\\_255x](CD:\Napdos\ZigBee\ZigBee_Converter\ZB_255x)
- iii. Document download website:  
<http://ftp.icpdas.com/pub/cd/usbcd/napdos/zigbee/>
- iv. Document download CD path:  
<CD:\Napdos\ZigBee\>
- v. ZigBee Product website:  
[http://www.icpdas.com/products/GSM\\_GPRS/wireless/solutions.htm#6](http://www.icpdas.com/products/GSM_GPRS/wireless/solutions.htm#6)
- vi. Technical Service:  
If you have any questions, send a description of your problem to [service@icpdas.com](mailto:service@icpdas.com)