

Quick Start for WinPAC-8000

May 2008, Version 1.0.

What's on your package?

Items	Quantity	Model No.	Description
WinPAC	1	WP-8041	Hardware module: 8041: 0 slot 8141: 1 slot 8441: 4 slots 8841: 8 slots
		WP-8141	
		WP-8441	
		WP-8841	
Manual	1	-	Quick Start Manual (this manual)
CD	1	-	Software utility, WinPAC 8000 user manual
Screw Driver	1	1C016	2.4 mm Screw driver (minus style)

Preparing for start-up your WinPAC 8000

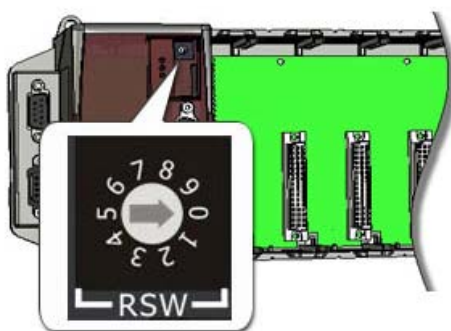
1. Power Supply: +10V ~ +30V/DC (Ex: DP-665)

http://www.icpdas.com/products/Accessories/power_supply/power_list.htm

2. Install the DCON Utility to PC (Version 5.0.1 or above version)

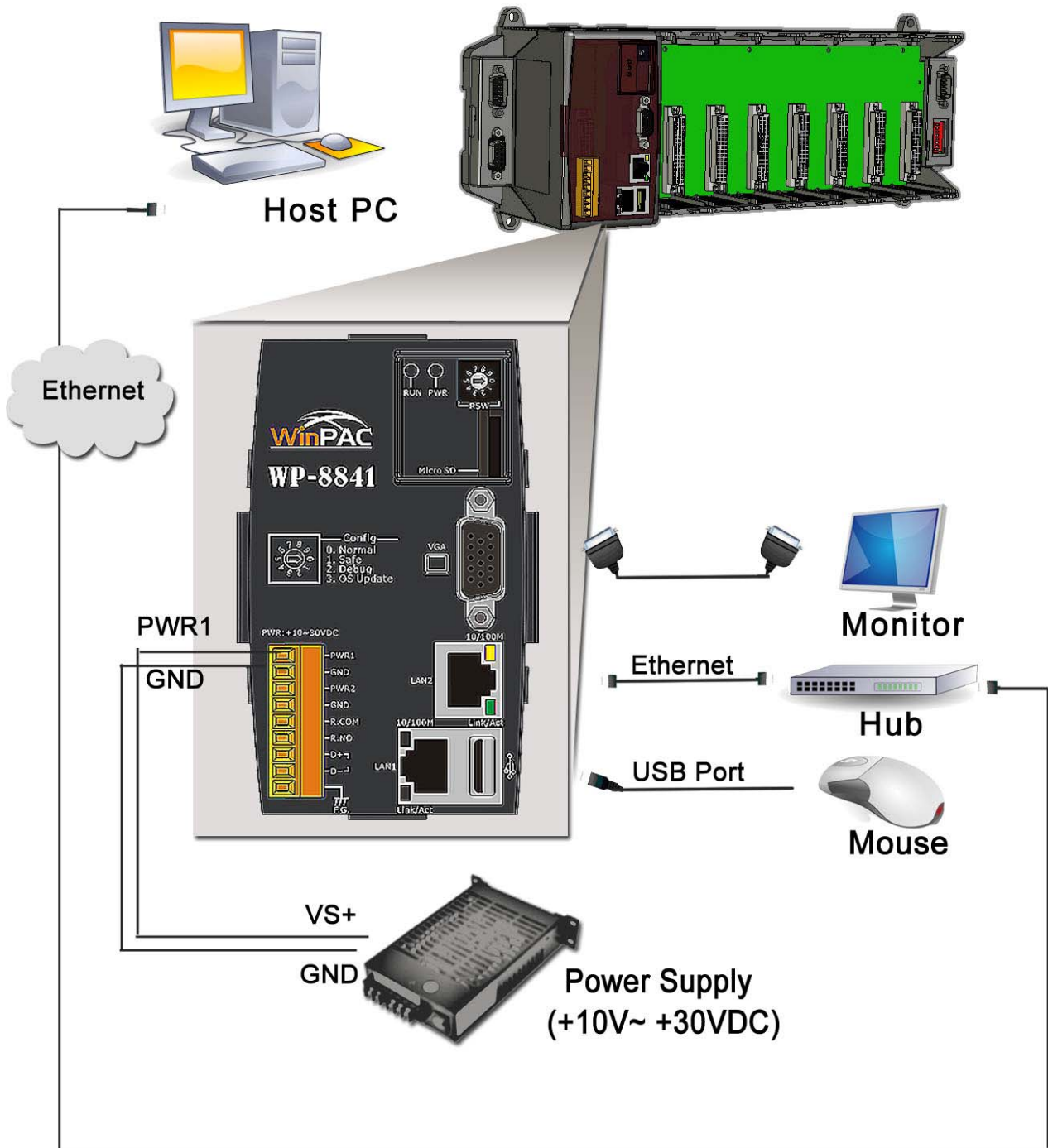
CD:\Napdos\wp-8x4x_ce50\PC_Tools\DCON_Utility

Configuring the operating mode



Make sure the rotary switch place in the "0" position.

Connecting the power and Host PC



Using WinPAC Utility to manage the controller



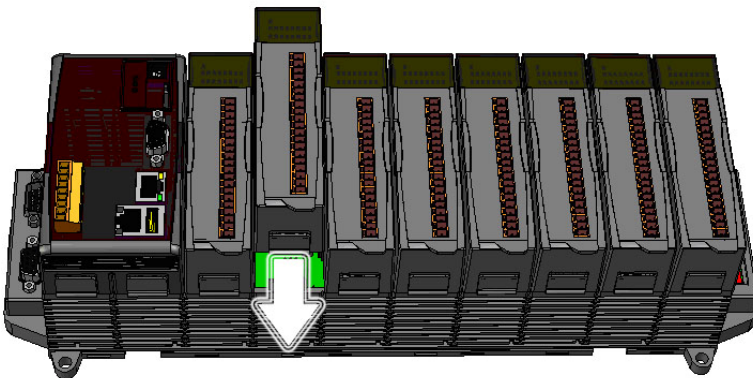
Step 1: Double Click on the WinPAC Utility shortcut on the desktop.



Step 2: Configure IP(DHCP), FTP Server, Auto Execution..., etc

Step 3: Save and Reboot

Inserting the I/O module



Only high profile I-8K and I-87K modules can be plugged.

Using DCON Utility to configure I-87K series modules

Step 1: Run the DCON firmware on the WinPAC controller.

The DCON firmware can be obtained from:

`\System_Disk\tools\DCON_CE`

Step 2: Run the DCON Utility on the Host PC



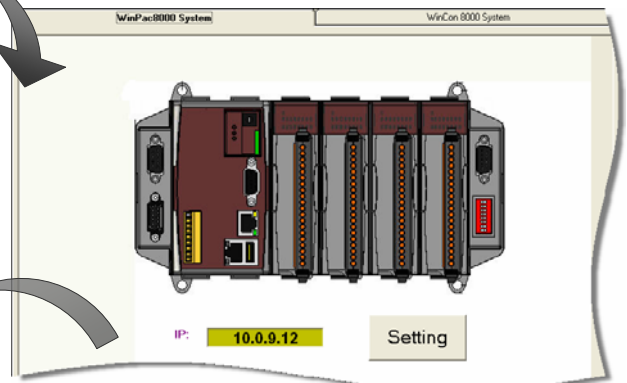
Step 3: Click the WIN CE command button



Step 4: In the "IP" field, type the IP address of the WinPAC Controller to search the i-87K series modules

Step 5: Click the module name from the list to configure the i-87K series modules

module	Address	Baudrate	Checksum	format	Status	Description
WinPac8000	1[1]	115200	Disable	N,8,1		WinPac8000 System(DCON)
xxxxx	S0	115200	Disable			[Parallel bus module] or [None]
xxxxx	S1	115200	Disable			[Parallel bus module] or [None]
xxxxx	S2	115200	Disable			[Parallel bus module] or [None]
87024	S3	115200	Disable			4*AO (pA/V)
xxxxx	S4	115200	Disable			[Parallel bus module] or [None]
xxxxx	S5	115200	Disable			[Parallel bus module] or [None]
87013	S6	115200	Disable			4*AI (RTD)
						[Parallel bus module] or [None]



Technical Support

- **WinPAC 8000 User Manual**

CD:\NAPDOS\wp-8x4x_ce50\Document\

- **DCON Utility User Manual**

CD:\NAPDOS\wp-8x4x_ce50\PC_Tools\DCON_Utility\Manual\

- **I-87K high profile series I/O modules selection guide**

CD:\NAPDOS\io_module\

- **WinPAC-8000 website**

<http://www.icpdas.com/products/PAC/winpac/introduction.htm>

- **Our service email account**

service@icpdas.com