



High quality data acquisition and embedded control products.

Setup I-7188E series

How to install I-7188E series with I-7000 modules using MiniOS7 and VXComm Utility?

Step 1: Connection of I-7188E series

Please use the following connection diagram to setup the I-7188E series and I-7000 modules.

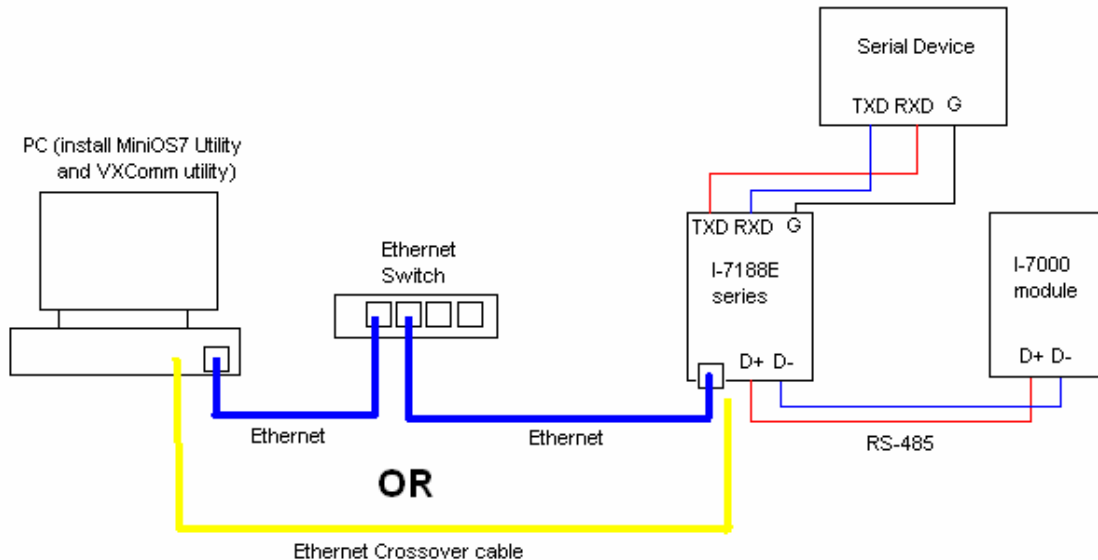


Fig : Connection diagram for I-7188E series with I-7000 module.

Power up the I-7188E series module and I-7000 modules before proceeding.

Step 2: Installation of MiniOS7 Utility

Install MiniOS7 Utility. Please click on the following link to download the utility and install it on your PC.

<http://www.icpdas-usa.com/documents/zips/miniOS7.zip>

Name	Size	Type
minios7_utility	903 KB	PDF Complete Docu...
minios7_utility_v316	3,563 KB	Application
minios7_utility_v317	3,548 KB	Application
minios7_utility_v318	4,818 KB	Application
minios7_utility_v320	4,752 KB	Application
minios7_utility_v321	4,745 KB	Application
readme_chi	8 KB	Text Document
readme_eng	8 KB	Text Document

Install the latest version of MiniOS7 in this case “minios7_utility_v321”

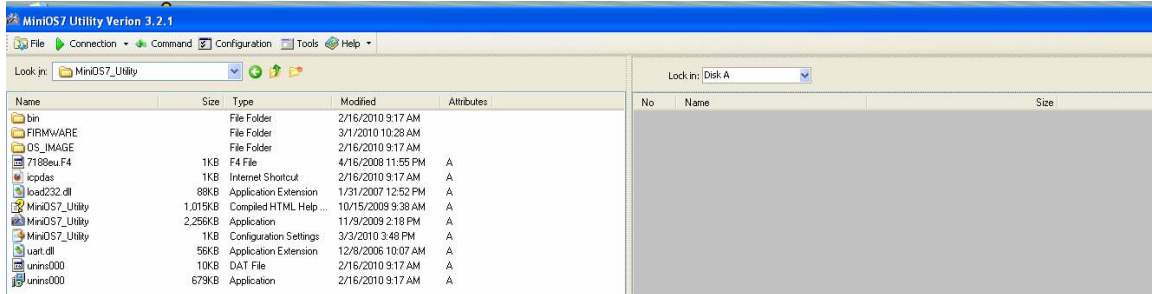


High quality data acquisition and embedded control products.

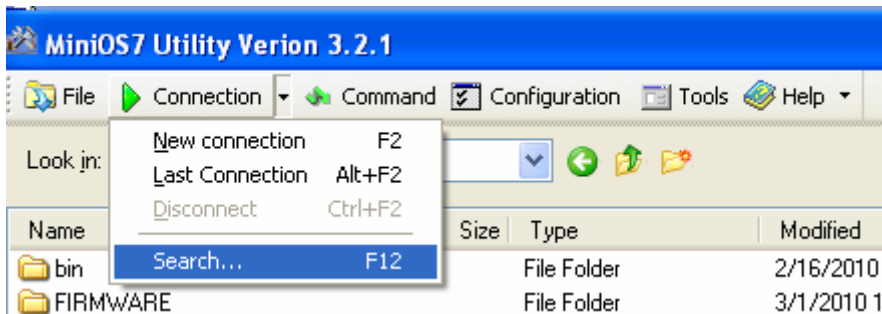


Double click on the MiniOS7 Utility Icon on the desktop to open the Utility.
Step 3 : Search the I-7188E series module in MiniOS7 Utility

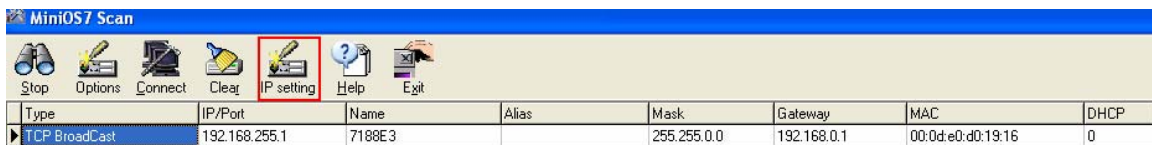
The following picture shows the main screen of the MiniOS 7 Utility.



Click on the drop down menu on the “connection” and click “Search”



The search function should automatically find the I-7188E series.



In case the I-7188E series is not found automatically then put the module in “Init” mode.
Steps to switch module into “Init” mode:

- Jumper a wire across INIT* and GND terminal.
- Power cycle the module.

The search function would bring up the module as below.



High quality data acquisition and embedded control products.

Search	Options	Connect	Clear	IP setting	Help	Exit			
Type	IP/Port	Name	Alias	Mask	Gateway	MAC	DHCP		
UDP Poll	192.168.1.2	7188E_UDP	ALIAS=	255.255.255.0	192.168.0.1	00:0d:e0:d0:19:16			
▶ UDP BroadCast	192.168.1.2	7188E_UDP	*	*	*	00:0d:e0:d0:19:16	*		

Steps to switch module back to normal mode:

- Remove the jumper wire from Init* terminal
- Power cycle the module

Step 4: Change IP Address, Subnet Mask and Gateway:

Click on the “IP Setting” and change the parameters like IP Address, Subnet Mask and Gateway. (Please check with your companies IT support before changing the IP Address)

Step 5: Connect to the I-7188E series module

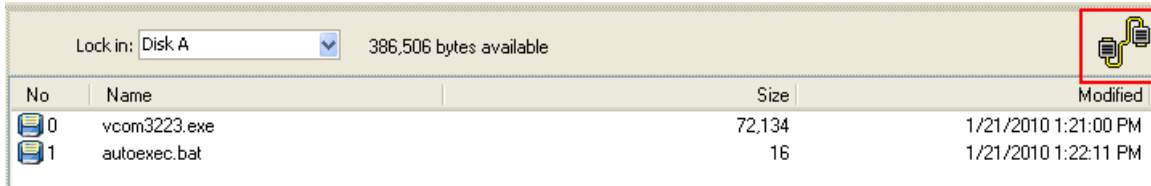
After the IP Address, Subnet Mask and Gateway is set correctly. Perform the Search function again. Press “Connect”.

Stop	Options	Connect	Clear	IP setting	Help	Exit			
Type	IP/Port	Name							
▶ TCP BroadCast	192.168.1.2	7188E3							

The connection is verified by checking the serial cable on the next screen.



High quality data acquisition and embedded control products.



If the serial cable on top right is fluorescent then the module is connected.

Step 6: Install the VXComm Utility

Please click the following link to download the VXComm Utility and the Users Manual.
<http://www.icpdas-usa.com/vxcomm.php>

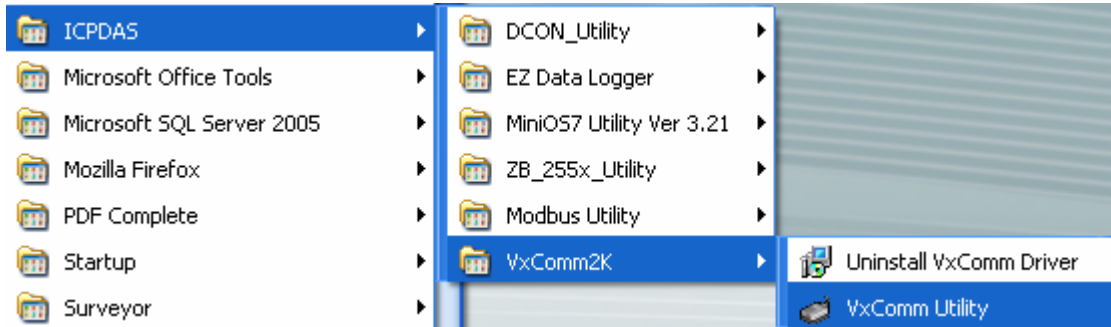
For Win 98: http://ftp.icpdas.com/pub/cd/8000cd/napdos/driver/vxcomm_driver/9x/

For Win 2K/XP: http://ftp.icpdas.com/pub/cd/8000cd/napdos/driver/vxcomm_driver/2k/

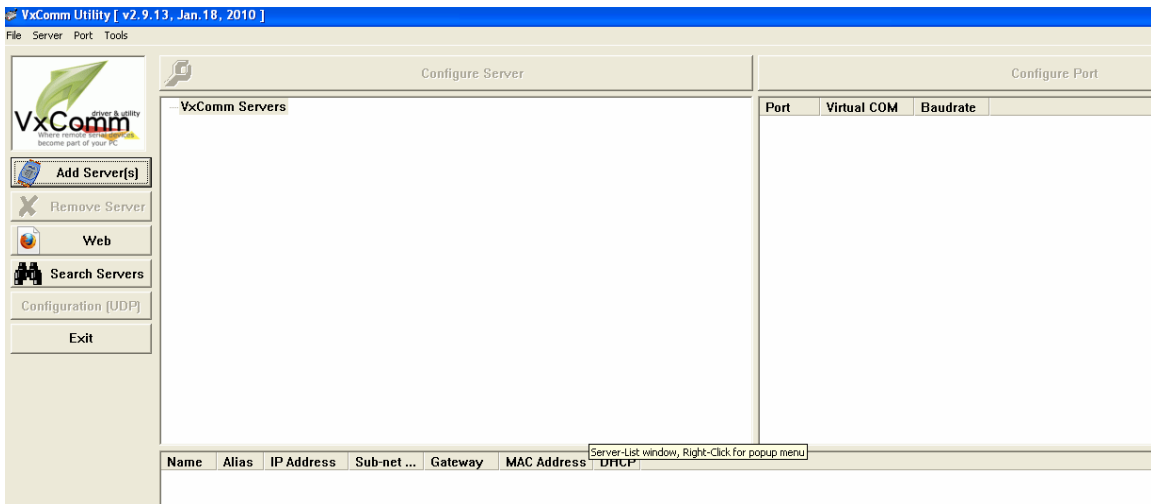
Manual: http://ftp.icpdas.com/pub/cd/8000cd/napdos/driver/vxcomm_driver/manual/

Step 7: Launch the VXComm Utility

After installing the VXComm Utility, run the Utility using the following path from Windows.



The main page of the VXComm Utility is as follows:





High quality data acquisition and embedded control products.

Use the VXComm Utility Manual to add I-7188E series as the VXComm Server. The following screen should be obtained once you configure I-7188E series module in VXComm. (I-7065 is connected on COM 2 of I-7188E3) Virtual COM 8 in this example.

The screenshot shows the VxComm Utility [v2.9.13, Jan.18, 2010] interface. The main window is titled "Configure Server" and displays a list of VxComm Servers. One server, 7188E3 [192.168.1.2], is listed. A red text annotation states "I-7065 is connected on COM 2 of I-7188E3 in this eg.". To the right, a table shows the port mapping:

Port	Virtual COM	Baudrate
Port I/O	COM6	N/A
Port 1	COM7	Dynamic
Port 2	COM8	Dynamic
Port 3	COM9	Dynamic

Below the main window, a table lists the server details:

Name	Alias	IP Address	Sub-net Mask	Gateway	MAC Address	DHCP
7188E3	N/A	192.168.1.2	255.255.255.0	192.168.0.1	00:0d:e0:d0:19:16	OFF

Step 8: Testing the devices connected on COM ports of I-7188E series

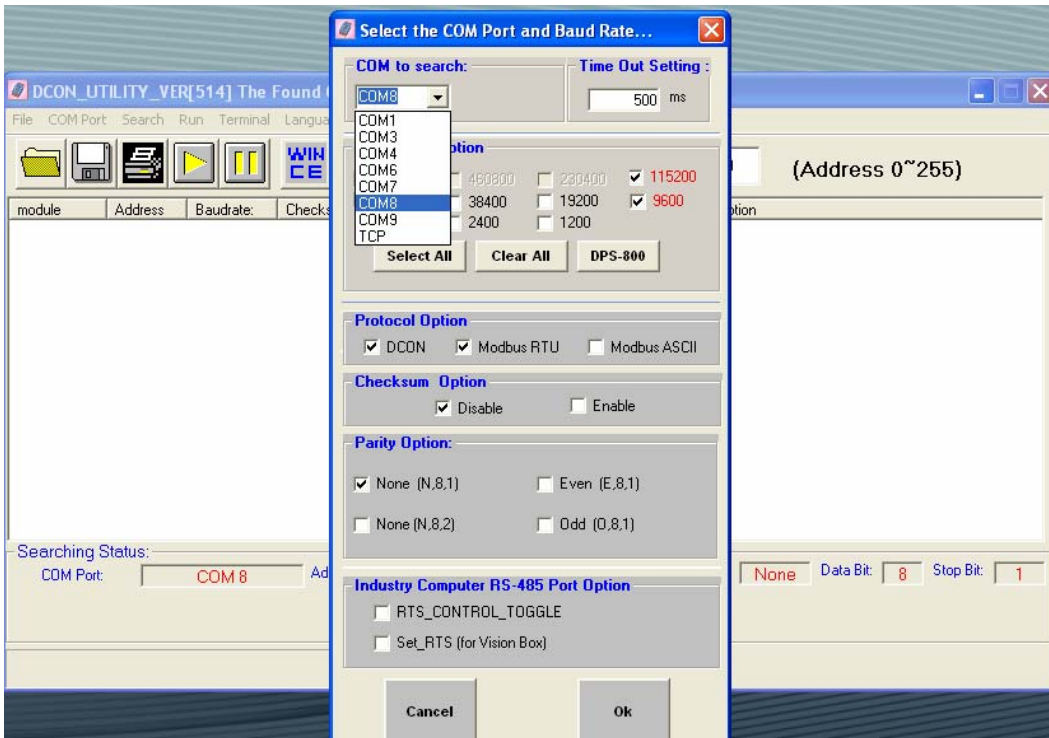
This is the verification step to confirm that I-7188E series has been configured and setup correctly. This can be done by pulling up the devices connected to the COM ports of I-7188E series in their respective Utilities.

Eg: In our example we have I-7065 connected to COM 2 of I-7188E3 (Virtual COM8) Hence we would use DCON Utility to pull up the I-7065 module information.

Select the COM 8 in DCON Utility



High quality data acquisition and embedded control products.



Search for the connected device (I-7065). Following is the screen that comes up.

